

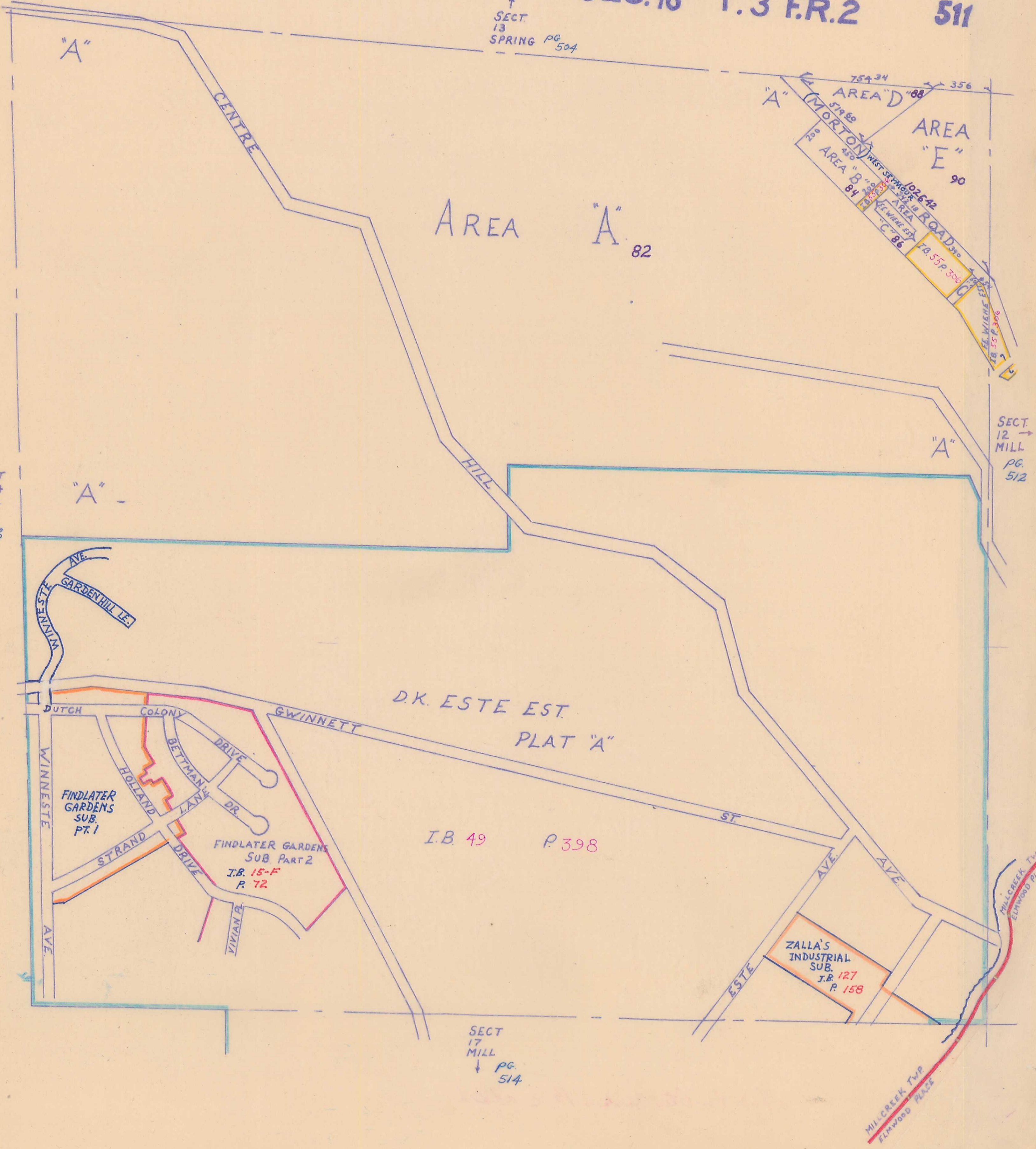
511

MILLCREEK TP. SEC. 18 T. 3 R. 2

511

7<sup>TH</sup> SER. = 17  
8<sup>TH</sup> SER. = 15-F

SECT 13  
↑  
SPRING PG 504



SECT 24  
MILL  
PG 433

SECT 12  
MILL  
PG 512

SECT 17  
MILL  
PG 514

D.K. ESTE EST.  
PLAT "A"

I.B. 49 P. 398

ZALLA'S INDUSTRIAL  
SUB. T.R. 127  
R. 158

"A"

AREA "A" 82

AREA "D" 88  
AREA "E" 90  
AREA "B" 84  
AREA "C" 86

"A"

"A"

WINNESTE AVE  
GARDEN HILL LN

DUTCH COLONY GWINNETT  
STRAND DRIVE HOLLAND LANE BETTMAN DRIVE VIVIAN DRIVE

ESTE AVE

MILLCREEK TWP  
ELMWOOD PLACE