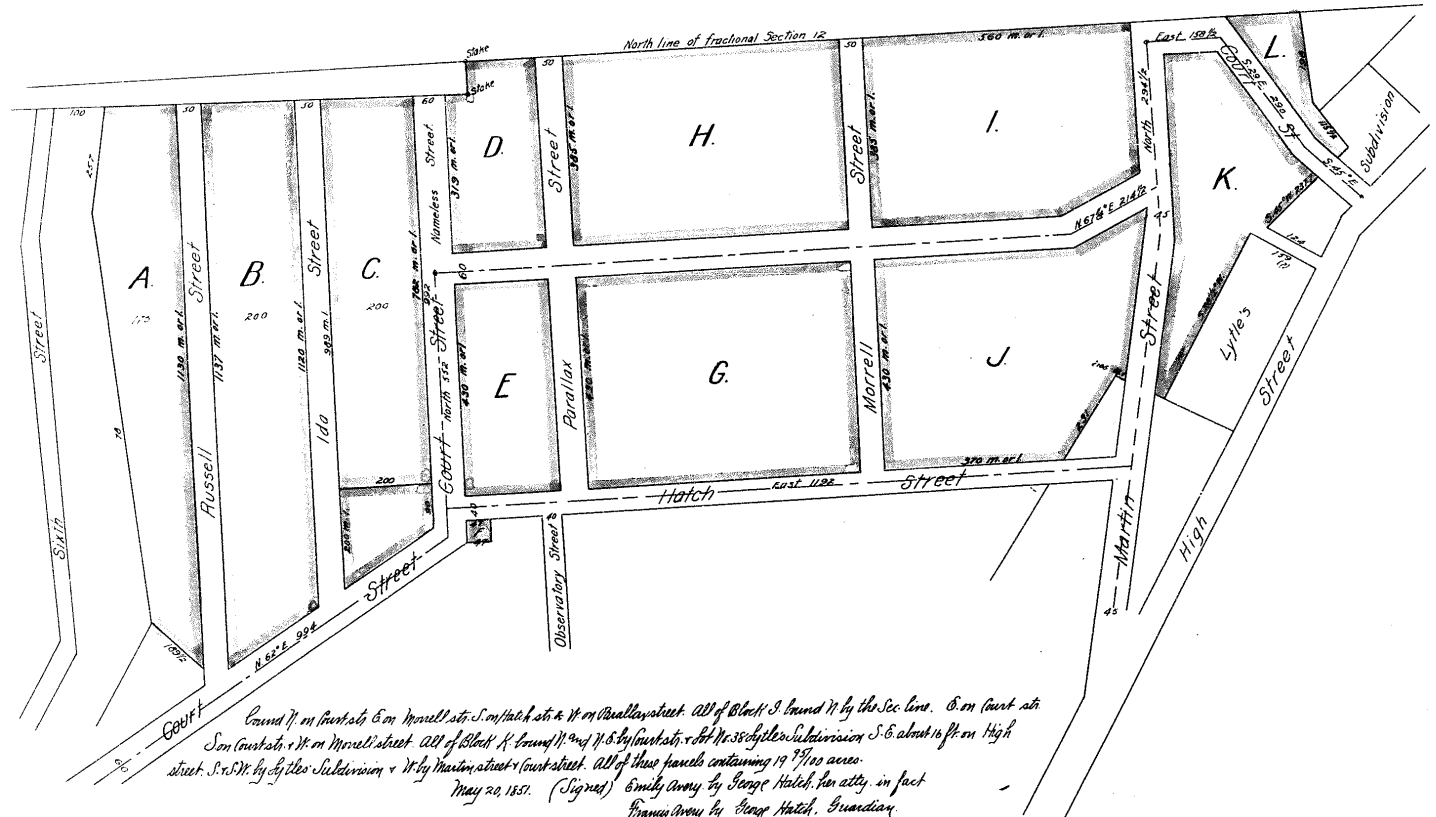


Vol. 193 pp 170-182 (May Term 1857-2926) Emily Avery vs Francis Avery. Whereas May 15, 1850 Emily Avery..... the Court of Comm. Pleas, her petition in Chancery against Francis Avery praying for partition of certain real estate, therein described and afterwards on June 22 same year, the court confirmed an agreed partition of a part of the real estate aforesaid, containing the same as to the remaining portion. Now therefore to fully carry out & complete a partition of the remaining part is set. The tract of land in full Sec. 12, T. 2 N. R. 1, a description of which will more fully appear in the petition in Chancery aforesaid to which reference is here made. Be it known that we Emily Avery & Francis Avery by her Guardian George Hatch, have made & adopted the accompanying Plat of Subdivision of the premises aforesaid, which is made a part hereof, attested by our signatures thereto, and do hereby lay out & dedicate to public use the Streets as shown & marked thereon, with the exception of Court street & Hatch street, which have been heretofore established - viz: Ida street, extending 50 ft wide from Court st. N. about 1025 ft. to the N. line of Avery's land the E. line of the street being parallel with + 20 ft. W. of that part of Court st. that runs N. on the summit of the Hill. Russell street extending 50 ft wide, from Court st. N. about 1137 ft to the N. line of Avery's land being parallel with + 70 ft. W. of Ida street. Parallel street extend 50 ft in width from Hatch street North to the Sec. line, the W. line of the street being parallel with + 70 ft East of that part of Court street which runs North on the summit. Morrell street extending 50 ft in width from Hatch street North, the E. line being parallel with + 50 ft East of Parallel street, subdividing the premises into Blocks designated by letters alphabetically from A. to L. inclusive. By the agreement assigned to Emily Avery as her share in these premises: All of Block A. bounded N. on lands formerly of Jacob Bay Miller or by Russell street, on the S. by lands of Nicholas Augustin & on the W. by lots known as the Hipple & Woods Subdivision. Also all of Block C. excepting therefrom a part from the South end measuring 90 ft on the W. side of Court st. & running through, at right angles on the N. line to Ida street as shown on the Plat. All of Block B. on same tract bounded N. by Court st. on the East by Parallel st. & by Hatch st. All of Block F. bounded N. by Hatch st. & by ground formerly of N. Kirby, S. by land of N. Augustin & W. by Court st. All of Block H. bounded N. by Section line & by Morrell st. S. by Court st. & W. by Parallel street. All of Block I. bounded N. by Court st. & ground late of William Martin, S. on ground late of Martin & on Hatch st. & W. on Morrell street. All of Block J. bounded on the N. by the Sec. line, & on ground formerly of Averill & Martin S. on ground formerly of Russell & Martin W. & S. by Court street. The whole containing about 19 1/2 acres. Likewise assigned to Francis Avery as his share in same premises all of Block B. bounded N. on lands formerly of Jacob Bay Miller & on Ida street S. on Court st. & W. on Russell street. Also S. part of Block C. measuring 90 ft on that part of Court st. which runs N. & about 20 ft on Ida street, the N. line of said parcel being at right angles from Court street. All of Block D. bounded N. on land formerly of Bay Miller & the Sec. line & on Parallel street S. on Court st. & W. on land formerly of Bay Miller & on Ida street having 50 ft wide. All of Block G. bounded N. on Court st. & on Morrell st. S. on Hatch st. & W. on Parallel street. All of Block K. bounded N. & W. by Court st. & S. on Morrell street. All of Block L. bounded N. & W. by Court st. & S. on Morrell street. All of these parcels containing 19 7/100 acres.



This Agreement, Partition & Plat, Approved and confirmed by court May, 21, 1857.

Cap 704
Comp 55