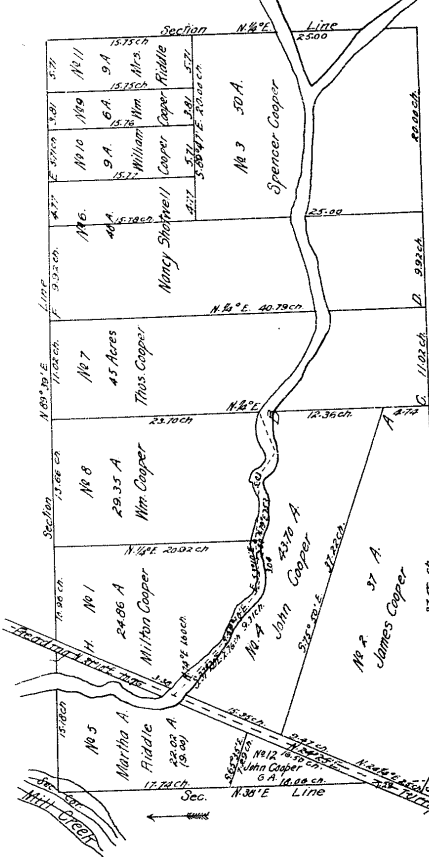
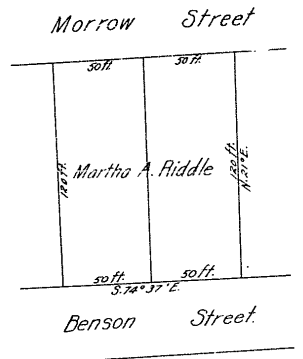


Vof. 201 pp. 351-351 (November Term 1851-3225) Partition of Estate of Thomas Cooper deceased viz: 333 ⁷/₁₀₀ acres in Sec. 27, T. 1, S. 1, R. 1, M. Ranneyed to Thomas Cooper by 3d Reading; one fourth of the N. 1/4 of said Sec. (containing 17.1571 acres) and from the heirs of John Henry for 3 acres in said N. 1/4 of Sec. 27, T. 1, S. 1, R. 1, M. P. Being the same lot assigned to Thomas Cooper, widow of John West, by the Commission of 1848 to make a partition assignment of land in a certain section for partition, shown the said Thomas Cooper, John West and Charles West & others. Thomas Cooper's heirs filed March 21, 1852 in favor of James Blair, said lot being laid out in the plat returned with the proceedings of said Commission in said case on the 27 Aug. 1852 returned in Clerk's Book A page 335 from Blair's case as well as fully appear by reference to said records. (See West's case: Beginning at a stone (B) in the line of Section 27, the N. 1/4 of said original tract, thence N. 89° 22' W. 200 ft to a stake in said line thence S 30° W. 172.3 ft to a stake thence S 89° 12' W. 245 ft to a stake in the edge of a small hand thence N. 89° 22' W. 193 ft to a stake in the place of Beginning certain, to 6.82 acres as per amended Plat Jan Middleworth's heirs Beginning on the N. line of said Sec. distant E. and S. from (B) 200 ft thence S 89° 22' W. 172.3 ft to a stake, thence S 30° W. 172.3 ft to a stone monument, being the S.E. corner of said original tract, thence N. 89° 22' W. 476 ft to a stone monument, being the S.E. corner of said original tract, thence N. 89° 22' W. 200 ft to a stake, being the S.E. corner of the tract assigned to Charles West, thence N. 89° 30' E. 195.38 ft to a stake in the line of Section 27, 37.88 acres as per Plat Survey of the whole tract: Beginning at B, a stake, on the amended Plat, in the line of Sec. thence S 89° 22' W. 378.77 ft to a stake, thence S 30° W. 279.9 ft to a stone monument thence N. 89° 22' W. 476 ft to a stone monument, thence N. 89° 30' E. 195.38 ft to a stone monument, thence S 89° 22' W. 226 ft to a stake in the edge of a small hand thence N. 89° 30' E. 195.38 ft to the Beginning containing 27.86 acres December 1851. R. P. Phillips Surveyor for Commissioners.

Plat of Partition in Sec. 27, T. A. E. R. 1

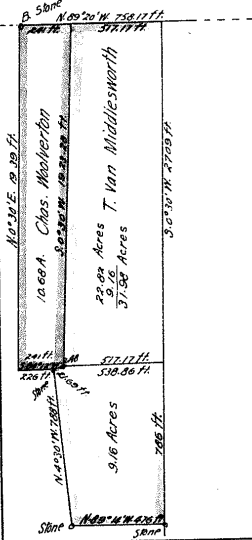


Lots 81 & 82 in Oliver's Addition to Lockland & Reading, copied for the heirs of Thos. Cooper by Jas. B. Bell, Surveyor. Nov. 29, 1851

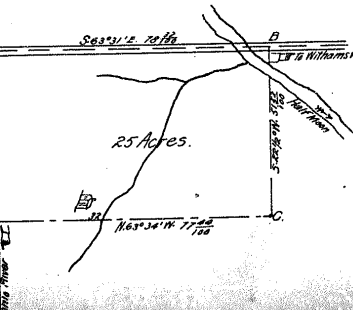


Reserving the right of way for the water to pass from the 6 acres lot across the 27.82 acre lot through the ditch now dug or in a water hole place as the parties may agree upon. The privilege of having running way a gateway for the water down the creek from lot 7 to the leading boundary, was reserved for the benefit of the owners of lots 6, 7 & 9 not mentioned in the recital part of Commission. Witnesses
 A. W. Oak 30 in. N. 71° 1/2 W. 22 ft. or 20 in. N. 20° 3/4 E. 57 ft.
 B. Sugar 10 in. N. 12° 0. 92 ft.
 C. Sugar 6 in. S. 57° 28' E. 17 ft. Hickory N. 24° 1/2 W. 52 ft.
 D. Hickory in N. 11° 1/2 W. 27 ft.
 E. Hickory 22 in. N. 55° W. 44 ft.
 F. Sugar N. 17° 0. 59 1/2 ft. or Walnut N. 57° 0. 32 7/8 ft.
 G. Stake on bank N. 8° W. 40 ft.
 A correct representation of the survey made by me on the ground under the direction of Commissioners appointed.
 Jas. B. Bell, Surv. H. C.
 By Geo. W. Boston, Deput.
 Nov. 29, 1851.

Vof. 201 pp. 385-390 (Nov. Term 1851-3243) (See West's case: James Van Middleworth for Partition of all that 45 acres tract in T. 1, S. 1, R. 1, M. P. Being the same lot assigned to Thomas Cooper, widow of John West, by the Commission of 1848 to make a partition assignment of land in a certain section for partition, shown the said Thomas Cooper, John West and Charles West & others. Thomas Cooper's heirs filed March 21, 1852 in favor of James Blair. said lot being laid out in the Plat returned with the proceedings of said Commission in said case on the 27 Aug. 1852 returned in Clerk's Book A page 335 from Blair's case as well as fully appear by reference to said records. (See West's case: Beginning at a stone (B) in the line of Section 27, the N. 1/4 of said original tract, thence N. 89° 22' W. 200 ft to a stake in said line thence S 30° W. 172.3 ft to a stake thence S 89° 12' W. 245 ft to a stake in the edge of a small hand thence N. 89° 22' W. 193 ft to a stake in the place of Beginning certain, to 6.82 acres as per amended Plat Jan Middleworth's heirs Beginning on the N. line of said Sec. distant E. and S. from (B) 200 ft thence S 89° 22' W. 172.3 ft to a stake, thence S 30° W. 172.3 ft to a stone monument, being the S.E. corner of said original tract, thence N. 89° 22' W. 476 ft to a stone monument, being the S.E. corner of said original tract, thence N. 89° 22' W. 200 ft to a stake, being the S.E. corner of the tract assigned to Charles West, thence N. 89° 30' E. 195.38 ft to a stake in the line of Section 27, 37.88 acres as per Plat Survey of the whole tract: Beginning at B, a stake, on the amended Plat, in the line of Sec. thence S 89° 22' W. 378.77 ft to a stake, thence S 30° W. 279.9 ft to a stone monument thence N. 89° 22' W. 476 ft to a stone monument, thence N. 89° 30' E. 195.38 ft to a stone monument, thence S 89° 22' W. 226 ft to a stake in the edge of a small hand thence N. 89° 30' E. 195.38 ft to the Beginning containing 27.86 acres December 1851. R. P. Phillips Surveyor for Commissioners.



Vof. 200 pp. 220-223 (May Term 1851-3236) Administrators of Charles Hawkins) Plat of Estate of said Hawkins, dec'd. To wit: all of the following (except 2.5 acres on the N. end, sold to Mrs. Bennett & now owned by James Bennett) situated in Section 27, on the western side of the Ohio River part of Survey 3395 in the name of James Hays, related to James Hays in certain 77 1/4 a. be the same land as was Beginning at 2 Sugar Tree's Stake on the N. end standing the S.W. corner, thence with the Patent line S 71° 25' E. 70 1/2 ft to a stake, the S.W. corner of Peter Higgins Survey No. 3394, S.E. corner of said James Hays' Survey thence with said James Higgins line N. 20° 39' 18. 105 ft to a stone in said line & corner to James Hays' Survey with the line N. 77° 17' 81 ft to a stone in the West Patent line & corner to Robert, thence with the Patent line S 22° 42' N. 153 ft to the place of Beginning Survey of the Hays property by John Matthews by Plat 28th Aug. 1842 returned in Clerk's B. 72.25



Administrators. Sent March 6, 1851 to Charles of Hawkins of 25 acres viz: being part of the estate of said Hawkins in Survey No. 3395 found as follows: Beginning at a stone in the road (at A) come to Mrs. Bennett, thence with her line S 63° 34' E. 78 2/3 ft to a stone (at B) in the road the Patent line of Mrs. Higgins, thence with said line S 22° 30' W. 5 1/2 ft to a stone (at C) thence N. 71° 25' E. 70 1/2 ft to a stone (at D) in the road - as line from Mrs. Whately's corner thence with the road N. 21° 45' E. 51 1/2 ft to the Beginning. Charles being had to a Survey made by G. S. Hickey & Co. of the land attached & made part of this Report will more fully appear. Surveyed Feb. 25, 1851.