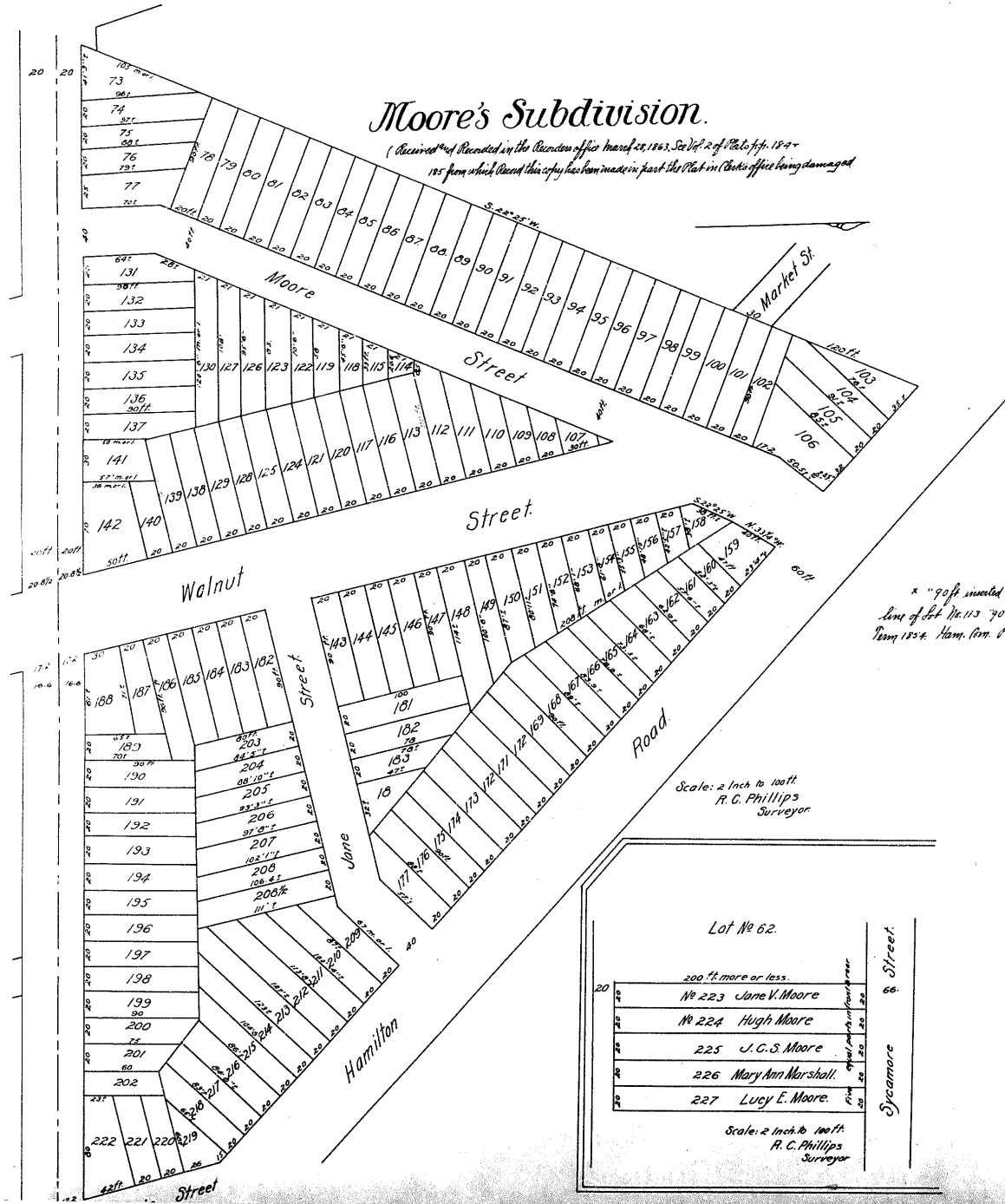


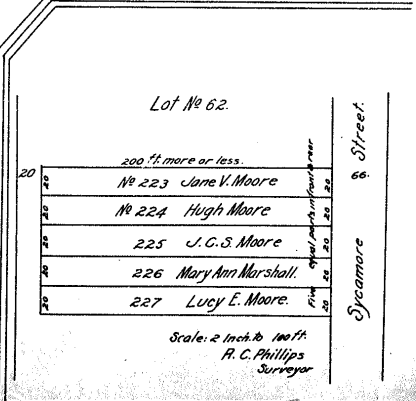
Moore's Subdivision.

(Received & Recorded in the Recorder's Office March 25, 1863, See Vol. 2 of Plats, p. 154 -
185 from which Record this copy has been made in part the Plat in Clerk's Office being damaged)



x "90 ft. marked on South line of lot No. 129 and on North line of lot No. 113 70 ft. by order of court, see minutes May Term 1854. Ham. Com. Pleas. Clarke, page 1530
J. M. Mc. Master, Clerk.
Ham. Com. Pleas. Ohio

Scale: 2 Inch to 100 ft.
R. C. Phillips
Surveyor



Lot No. 62.
200 ft. more or less.
No. 223 Jane V. Moore
No. 224 Hugh Moore
225 J. C. S. Moore
226 Mary Ann Marshall.
227 Lucy E. Moore.

Scale: 2 Inch to 100 ft.
R. C. Phillips
Surveyor