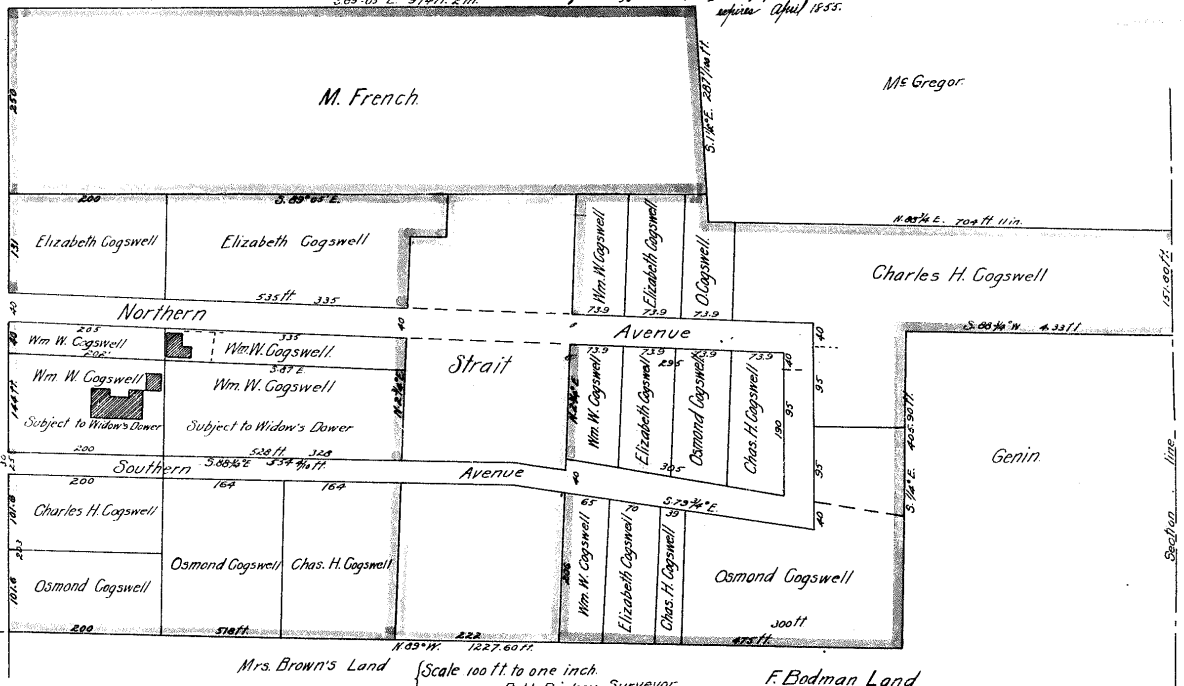


Dec. 170, 4p. 370-389 (Vol. 7, 1851-2036) Partition of Estate of Osmond Cogswell...



Continuation on Page 137. (Dimensions set off to Osmond Cogswell, Pt. commencing at S.W. cor. of tract on the hill adjoining New Rowers St. & running N.W. on Auburn St. half way to the S. line of Southern Avenue...)