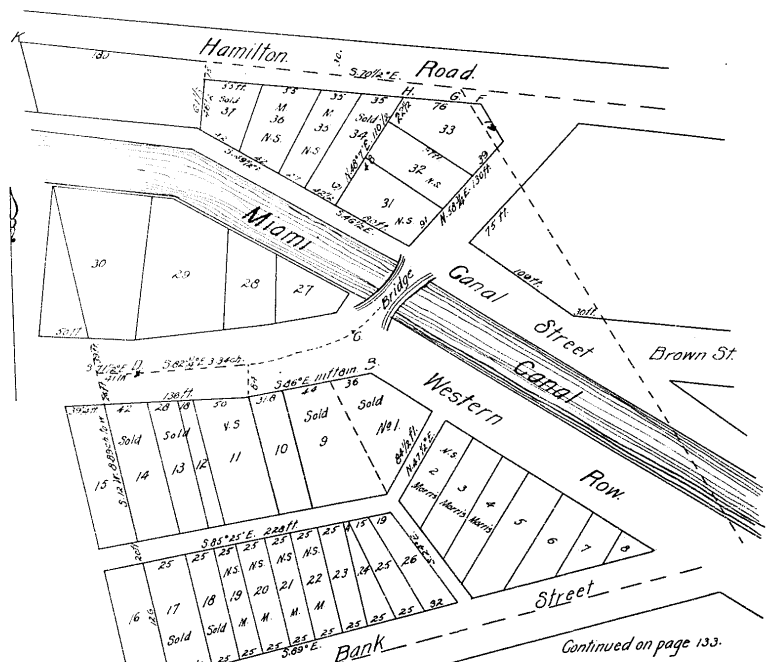


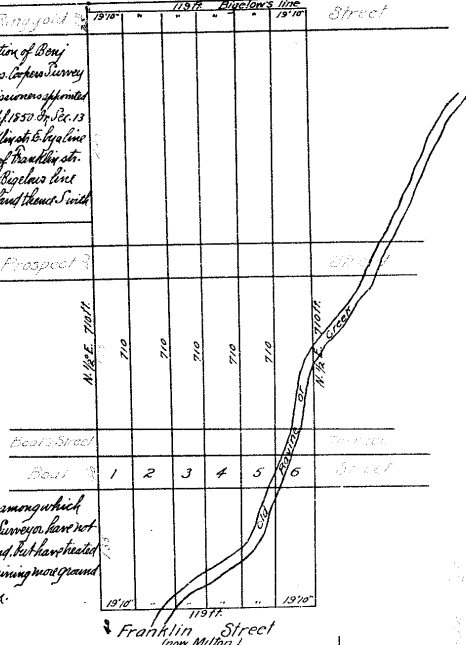
Vol 169 p. 385-511 (May Term 1851-180) Blank & Drake Executor of Benjamin Drake, dec'd. in chancery for sale of part of estate situated in Washington & Bloomington, Indiana in Hamilton County (as far as partition hereon) 1) An equal...



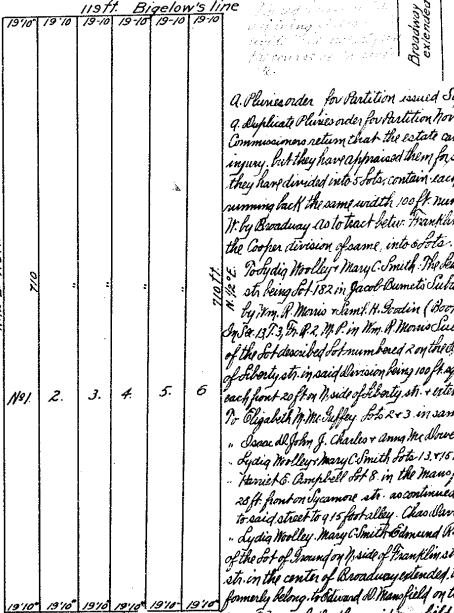
Commissioner's Partition Dec. 14, 1848 Between Wm. R. Morris on the one hand, the executor & legal representatives of Benjamin Drake dec'd. on the other of the plat...

The black lines w/word-figures make a copy of Three-Corner Plat

Vol 169 p. 385-511 Sale & Partition of Benjamin Drake's Estate Continued. Two-Corner Survey made under direction of Commissioners...



Exceptions above this report among which that the Comms & their surveyors have not correctly measured the ground...



A Plene order for Partition issued Sep. 30, 1850 of duplicate Plat's made for Partition Nov. 20, 1850. Commissioners return that the estate can not be divided without survey...