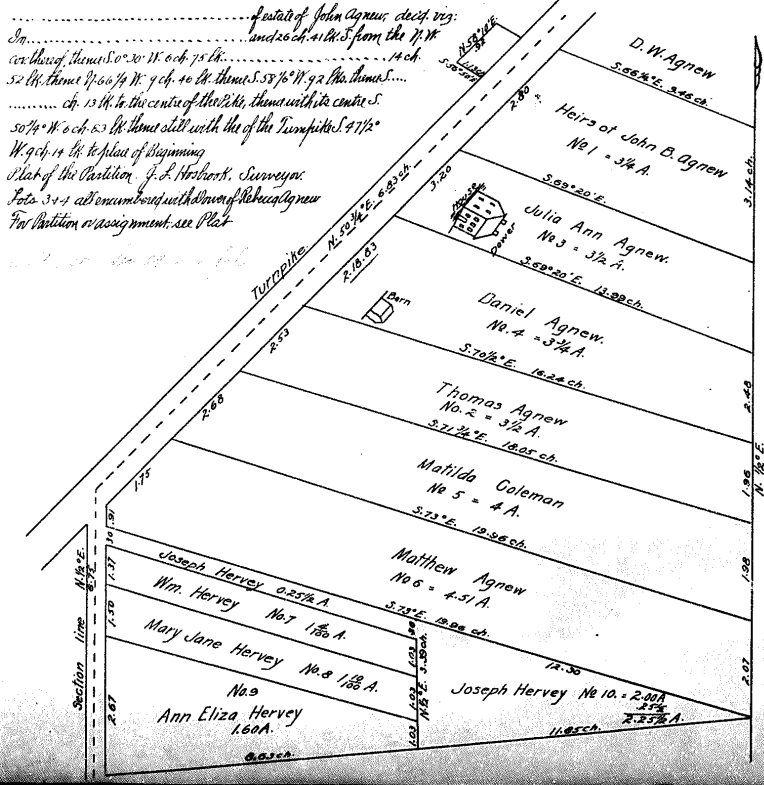
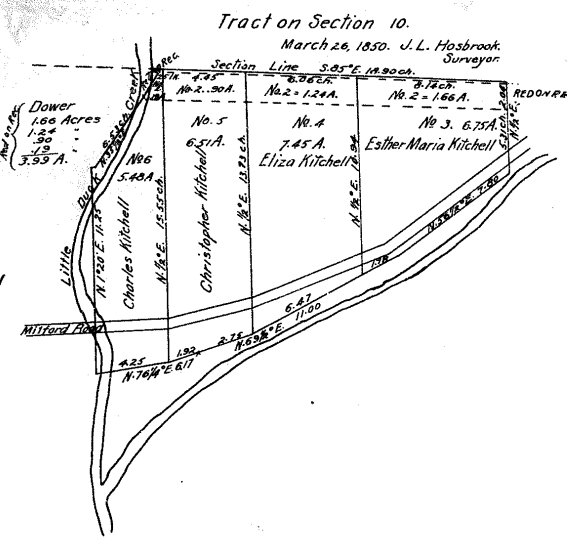
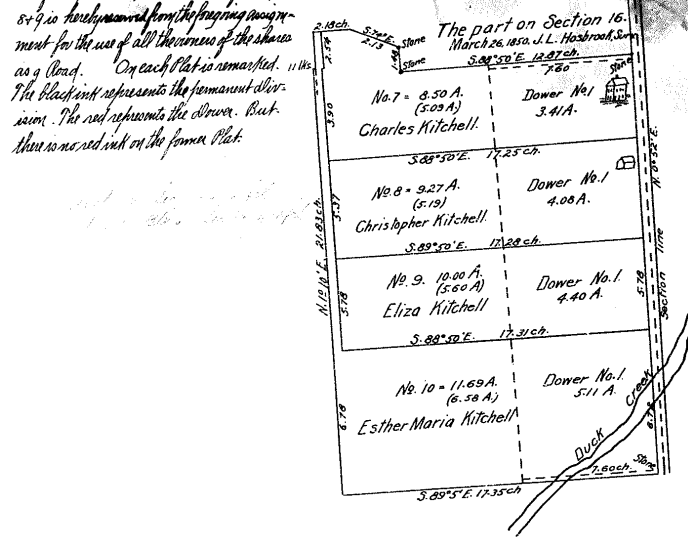


Vol. 170 p. 27-33 (Pub. P. 1850-1852) Partition of Estate of Saml. Mitchell vs: Beginning at a small black spruce on the East bank of Duck Creek on the N. hand long of Sec. 16, T. 2, R. 2, M. P. thence S. 85° 40' E. with Stone 75 1/2 poles to a stone set at the corner of a certain lot thence S. 55° 20' W. 1/2 pole to a fourth stone (White) thence S. 60° 45' W. 24 feet to a 5th stone S. 75° 30' W. 25 feet to a 6th stone on the bank of said Duck Creek thence N. 35° E. 65 feet to a 7th stone N. 34° 45' E. 28 feet 3/4 to a 8th stone beginning also 19 p. 15. N. 77° 40' off the East of Town Lot No. 2 above above in N. W. cor. of Town Lot No. 2 both of the last said tracts long with a nail in Sec. 16, T. 2, R. 2. Also the 1st division is 1/2 of Town Lot No. 2, Sec. 16, T. 2, R. 2. A north and south line has no record of it. For Assignments see Plate 920 ft. alley from the N. W. cor. of lot 14 in Sec. 16 north to the N. W. cor. of the premises, across the end of lots 7 & 9 in accordance with the foregoing assignment for the use of all the owners of the shares as a Road. On each Plat is a roman numeral. The black ink represents the permanent division. The red represents the division. But there is no record on the former Plat.



Vol. 170 p. 12-19 (Pub. Term 1850-11.1850) Partition of Estate of Lazarus Pine, dec'd vs: In Sec. 1, T. 2, R. 1, M. P. Corn. at S. E. cor. of said Sec. thence running N. 60° 15' W. 19 ch. 9 in. thence S. 89° 25' W. 20 ch. 16 in. thence S. 20° E. 19 ch. 10 in. to a 5th stone place. thence along the same N. 89° 25' W. 20 ch. 21 in. to place of Beginning. contain 40 A. Being part of the property conveyed to Clark Bates by Wm. Phipps, trustee for Thomas W. Meagher by deed of Feb. 2, 1832 being the same conveyed by said Clark Bates to said Bates 2. 1832 (Book 41, p. 358) also part of S. E. 1/4 in S. Sec. 1, T. 2, R. 1. Commencing by the S. line of said Sec. in the center of said quarter from thence running N. 0° 20' W. 19 ch. 87 in. thence S. 89° 10' W. 2 ch. 52 in. thence S. 20° E. 19 ch. 20 in. to S. line of said Sec. thence S. with said line 2 ch. 52 in. to place of Beginning. contain 5 acres, about more Wm. Belle deed of Jan'y 7, 1834 to said line in S. Sec. 1, T. 2, R. 1. Also in S. Sec. 1, T. 2, R. 1. Commencing at S. W. cor. of said Sec. thence running North and S. line to same as above W. corner, thence N. 1° 10' E. 17 ch. 11 in. to the first mentioned line to the N. line of said Sec. thence S. 1° 15' E. 17 ch. 9 in. to place of Beginning. contain 5 acres 79.01 ft. Beginning 35000 M. R. 1. 1/2 by said line to Richard Bates vs: Beginning by the S. line of said Sec. at same distance S. W. cor. from thence running N. 1° 10' E. 17 ch. 9 in. to S. line of said Sec. 87 feet 16 in. thence S. 89° 10' E. 2 ch. 52 in. to S. line of said Sec. thence with the line of said Sec. 87 feet 16 in. to place of Beginning and being part of the 57 acres above described respectively Benjamin Pine thence along said line (Book 41, p. 359) on May 26, 1852. Commissioners also set off for the use of said Sec. 1, 30 ft. street, leading from lot 5 to the Blue Rock Road. Includes with Sheet 147, 2, C. L. 1.

