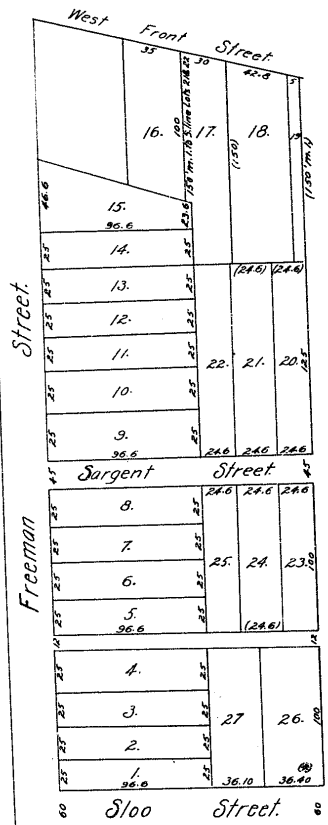


Vol. 157 p. 490-494 (May Term 1851-2 1857) Amicable Partition of Estate of David Sargent, dec'd. sig. by City. Beginning at a point 63 ft. 7 in. from Freeman st. on the N. line of West Front st. Extended at the S.W. cor. of a lot near owned by Miles G. Williams, thence N. by a line parallel to Freeman st. 100 ft. thence S. by a line to Front st. 63 ft. 7 in. to the S. line of Front st. thence W. by a line to the S. line of

170 ft. 4 in. to the N.E. cor. of a lot owned by the late Maria French thence S. by a line to Freeman st. 525 ft. 7 in. to Front st. thence S. by a line to Front st. 112 ft. 5 in. to place of Beginning said lot having a 2 story brick house thereon facing on N. side of Front st. also commencing at a point in the S. line of West Front Street extended betw. Hamlet & Horn st. where John Hoods' Custom bound line intersects said street, thence S. westerly, along S. line of Front st. 69 ft. 7 in. to the W. line of a lot owned by Rich. Long with thence S. westerly, along line of said long with the lot, to the Ohio river at low water mark, thence down the river at low water mark to the S. line of John Hoods' lot as if thence N. westerly, along the S. line of lot to place of Beginning. Agreement as to Division Shares of George G. Sargent. Lots 3, 4, 9, 14, 15, 18, 22 & 25 between parallel lines. Shares of Mary Jane DeCamp. Lots 2, 5, 8, 11, 14, 16, 21, 24, 27. Also the lot on S. side of West Front st. betw. Hamlet & Horn streets, commencing at a point in S. line of Front st. 32 ft. 6 in. of S. line of John Hoods' lot thence S. westerly, along Front st. 32 ft. to N. long with the W. line, thence S. westerly, along long with the line to the Ohio river at low water mark @ to a point where a line drawn S. westerly from the place of Beginning, parallel to long with the line as if, would strike the Ohio river at low water mark, thence with said line as a if, drawn to place of Beginning @ thence down said river at low water mark to a point 10 Shares of David S. French. Lots 1, 6, 7, 12, 13, 17, 19, 20, 23, 26 - also the lot on S. side of West Front st. betw. Hamlet & Horn streets, commencing at a point where the S. line of John Hoods' lot intersects the S. line of Front st. thence S. westerly, 32 ft. thence S. westerly, with Mary Jane DeCamp's W. line to the Ohio river at low water mark, thence down the river to said Hoods' line, thence N. westerly, with said Hoods' line to place of Beginning. Confirmed by court.



(1) Description reads: "36.10"

Vol. 104 p. 236-299 Concluded. Exhibit 33. S. line of grade of S. 10th st. above corner of the line of lot 12, at 10 1/2 ft. above N. 1/2 of the S. line of S. 10th st. descending to a point of 11 7/8 inches in every 10 ft. 31 1/2 ft. to a point 11 7/100 ft. below said N. 1/2 of the S. line of S. 10th st. thence ascending at a grade of 10 1/2 inches in 10 ft. about 275 ft. to the present pavement line of S. 10th st. thence ascending at a grade of 10 1/2 inches in 10 ft. about 275 ft. to the present pavement line of S. 10th st. as established. The grade of S. 10th st. from N. 1/2 of the S. line of S. 10th st. to the N. 1/2 of the S. line of S. 10th st. at a level of 11 7/100 ft. below said N. 1/2 of the S. line of S. 10th st. at a grade of about 2 1/2 in. in 10 ft. about 525 ft. to S. 10th st. finally satisfaction given in fully by finders and cert. No Sale.

Vol. 104 p. 451-457 (Jan. T. 1857 - 3 699) John Hyatt vs. Aug. W. Phoster et al. Foreclosure of mortgage given by Def't: to P'ty involving land in N. 1/4 Sec 23, T. 3, R. 18, W. P. Beginning at a stone in the falls of Rapid Run N. 1/4 cor. of S. 1/2 of the heirs of Andrew Mayo, thence N. 79° 5.5 ch. 61 ft. to a sign post, thence N. 79° 5.5 ch. 7 ch. 95 ft. to a sign post & bench thence S. 61° 11 ch. to a stake, with a bench 6.5. 23° 25. 20 ft. thence N. 79° 5.5 ch. 90 ft. to a stake in the sea line, thence S. 50° W. with the sea line 17 ch. to a cor. of Samuel Mayo, thence with the line S. 17° 6 ch. 93 ft. to a pile of stones on N. side of creek thence S. 73 1/2° E. up the creek 24 ch. 5 ft. to place of Beginning contain 20 1/100 of street meas. Defendant's answering says that subsequent to the purchase he carefully examined said premises & the previous surveys of them & the adjoining lands & discovered that the amount fell short almost an acre of the amount which it ought to contain according to the deed to defendant that the lines given in said deed not meet the true lines of said complements tract, but if followed, would take from the land of Samuel Mayo about an acre as represented on the plat hereto attached. Defendant says that the true lines of said tract, as he believes are as follows: Beginning at a stone in the falls of Rapid Run the S. 1/4 cor. of a lot of S. 1/2 of the heirs of Andrew Mayo thence N. 79° 5.5 ch. 61 ft. to a sign post, thence N. 79° 5.5 ch. 95 ft. to a sign post & bench, thence S. 61° 11 ch. to a stake in the sea line thence S. 50° W. with the sea line 15 ch. 50 ft. to a cor. of Samuel Mayo, thence with the line S. 17° 6 ch. 93 ft. to a point water by a bench here (agreed to by the survey made by John G. Hoshorn, Surveyor) thence S. 73 1/2° E. up the creek 23 ch. 60 ft. to place of Beginning.

Satisfied. - No Sale.

