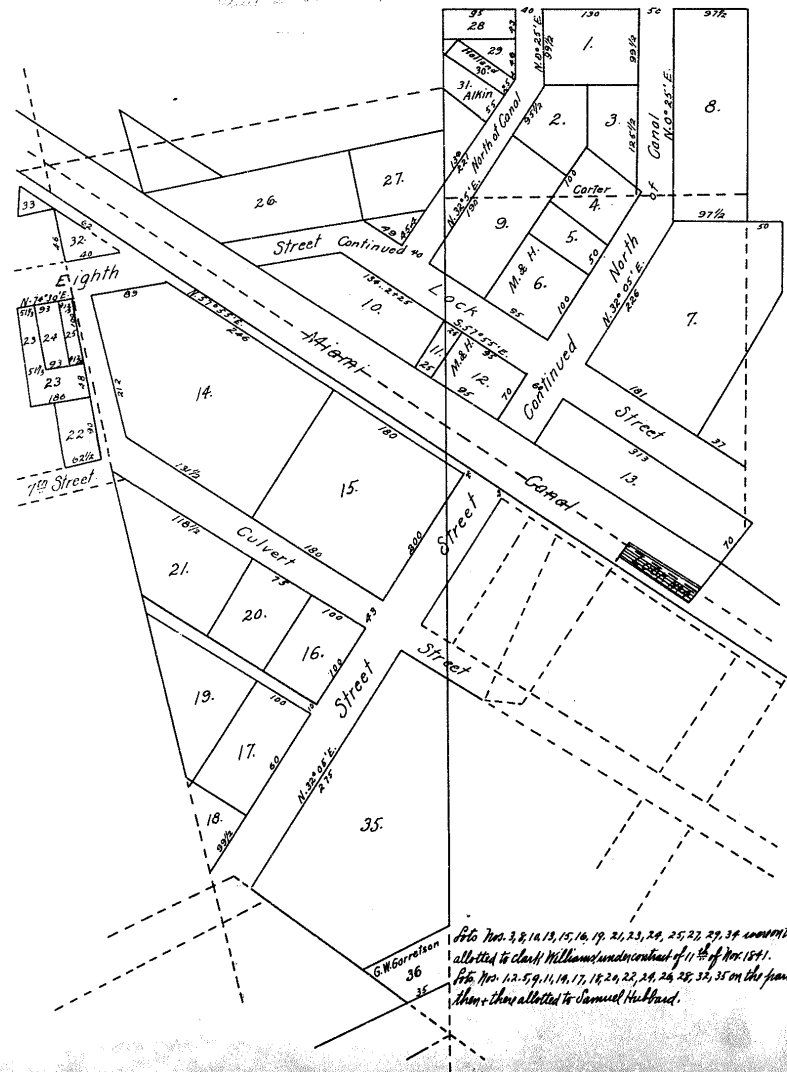
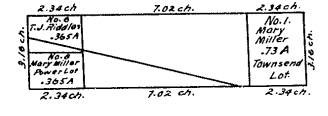


June 5, 1849
 Vol. 104 p. 236-299. (Oct. 7, 1850 - S. 33) Bank of U.S. of Pa. vs. Clark Williams. Finclosure of a mortgage given by him, April 4, 1836, for part purchase money on the following lands in city, on South st. and the Canal East of Lycoming st. 1) about 1/4 acre 70 ft. on South st. which the Miami Canal now passes) Beginning on N. side of Harrison st. about 57 1/2 ft. E. by from Broadway at the intersection of the Sec. line thence on Harrison st. W. by about 53 ft. to lot of land sold to com. to N. Broadway, thence ending thence N. 1/2 1/2 W. 19 1/2 ft. or thereabouts to South st. thence N. by 6 1/2 ft. to the side of South st. thence W. by thence to East St. No. 2, thence ending thence W. by about 23 1/2 ft. to N. line of Seventh st. thence on that street W. by, to a point 5 1/2 ft. E. by from Broadway thence E. Broadway N. by, 23 1/2 ft. to the side of South st. thence on that st. E. by, 8 1/2 ft. thence E. Broadway N. by, 120 ft. thence E. by Eighth st. W. by, 8 1/2 ft. (said 2 last lines adjoining C. Broadway) thence E. Broadway N. by, 6 1/2 ft. to the line of East St. thence on said line with the course thereof N. 72° E. 50 1/2 ft. to said Sec. line thence N. 7 1/2 W. thence about 280 7/8 ft. to N. W. cor. of 4 acres of land formerly held in common by John B. Baker, Nelson & Baum, thence with the several lines of said 4 acre lot N. 51 3/4° E. 430 ft. S. 29 1/4° W. 23 1/2 ft. to the S. E. cor. of said 4 acre lot, thence on the late Madison Baum's line @ 589 3/4° E. 411 ft. to the said Sec. line thence thence S. 34° E. about 570 ft. to the beginning. Excepting the 1/4 acre of said Baum's Paris + Kilgus's Paris + devices to said 4 acre lot, being 7 1/2 thereof 5/8 a lot adjoining the foregoing front of lot 3, fronting on side of Eighth st. 123 1/2 ft. W. of and called back S. by, 145 ft. 7 1/2 ft. bounded by the lands conveyed to John B. Baker to a. Walter's to Walter Coakley's 4 1/2 ft. on N. side of Eighth st. below Lycoming + Broadway bound S. by Eighth st. N. by the line of East St. N. by 2 acres called East St. Chepines contain, 50 ft. front on Eighth st. by 10 ft. deep, exact measure straight in the map of Bacon Squared on Feb. 27, 1838. Recorded Book 44, page 326. @ 426 ft. is two corners, thence with the line of East St. by 10 ft. Exhibit 57 to the answer of Clark Williams vs. Samuel Hubbard.
 William Hubbard's Map of Subdivision of Nov. 11, 1841.
 Cont. 00 map 500
 Cont. 2 200 map 500



117
 Vol. 160 p. 494-491 (May Term 1850 - N. 4000) The C. H. & D. R. R. Co. appropriate to their R. R. the full portions of the plat of Partition of the estate of John Miller died in Sec. 27, T. 3, R. 1, M. P. 103. all of small Plat No. 500 said Plat of Partition, a copy of a part of which plat of Partition, is here attached + made a part hereof, showing the line of R. R. thence also as much of small Plat No. 1, commencing on S. line of said lot + running E. along said S. line 17 ft. to S. E. cor. of said lot thence N. by, 210 ft. line of said lot 10 ft. thence straight to the place of beginning, making a triangle certain, 1/1000 acre. N. of also a part of small Plat No. 6, commencing on S. line of said lot + extending thence E. along said S. line 80 ft. to S. E. cor. of said lot thence N. by, the S. line of said Plat 159 1/2 ft. to N. W. cor. of said lot thence N. by, 10 ft. thence by a straight line to place of beginning certain, 1/1000 acre. N. of E.
 Cont. 2 200 map 500



Vol. 104 p. 68-73. (Jan. T. 1850 - S. 1223) Assignment of Deeds + Partition of estate of George H. Brew to wit: in Sec. 1, T. 3, R. 1, M. P. 1) Beginning on E. line of said Sec. 1, at the N. E. corner of H. Bywaters tract at a stone at the S. edge of the creek, thence S. 86 1/2° W. 31 ch. 75 ft. with Bywaters N. line, to the center of Mill Creek, thence with the creek N. 26 1/2° W. 50 ch. 70 ft. thence N. 19 1/2° E. 2 ch. 9 ft. thence N. 59 1/2° E. 8 ch. 70 ft. to a stake on the N. line 3 rods E. of the corner of W. Beach N. 60° E. 5 ft. White Walnut 10 inches @ 15° N. 84 ft. thence from the corner in the creek N. 56 3/4° E. parallel with the S. line 30 ch. 52 ft. to the Sec. line, thence S. 22° W. 8 ch. 95 ft. to the place of beginning containing 10 acres strict measure. 2) In same Section: Commencing at a point on the E. line of said Sec. at N. E. cor. of the above tract, thence along Sec. line N. 11 ch. 50 ft. to the center of Mill Creek the East Branch thereof, thence down the creek on the center, thence S. 75° W. 4 ch. thence S. 87° W. 2 chains thence S. 27° W. 13 ch. to the N. W. corner of tract, belonging to the said Brew first above described, the center of the main Branch of Mill Creek, thence N. 80 1/2° E. 6.32 ch. to place of beginning containing 28 5/100 acres. Surveyed by me Feb. 22 + 23, 1850 by direction of Commissioners - J. B. P. The courses + distances of the original survey were not all named in the order, so that the whole of the 2 tracts were surveyed by me and might not have taken in so much of Mill Creek as was taken originally, as the quantity is nearly 1 acre less than the amount called for in the Deeds + the 7 acres of above included in the said Deeds. Thomas Cooper, Surveyor assigned as for Plat.

