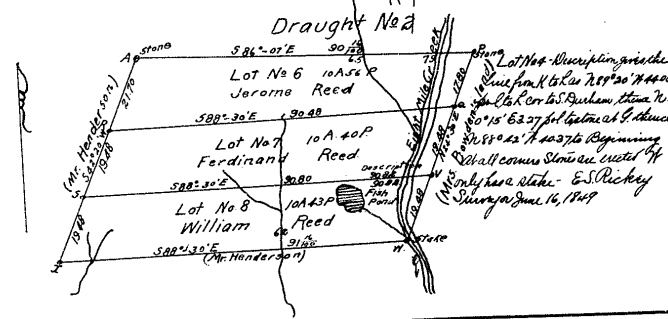
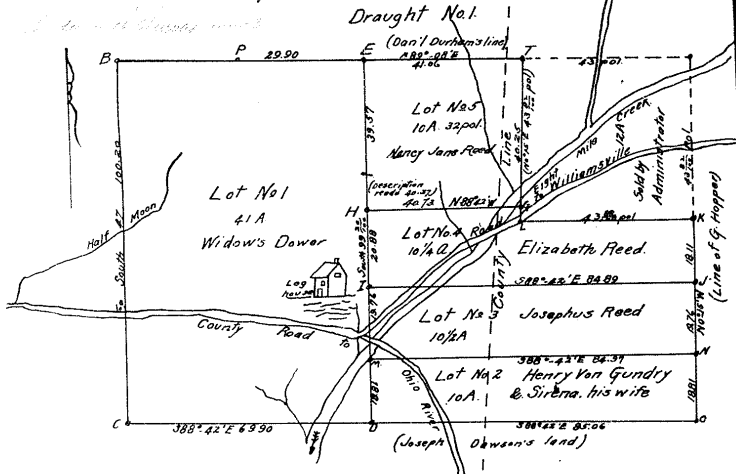
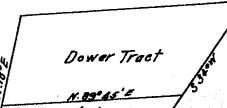


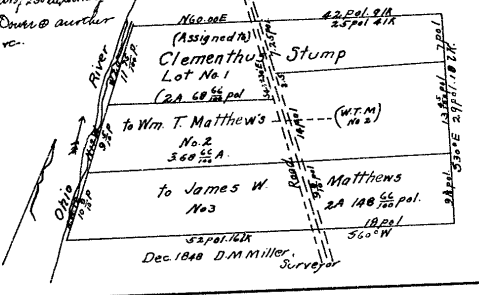
Vol. 151 p. 147-148 May 9 1849-1850 Partion of Estate of Rachel Reed dead viz In Hamilton Co and a portion of Eight Mile Creek being part of a tract of land purchased by the said William Reed...
 Vol. 151 p. 149-150 May 9 1849-1850 Partion of Estate of Rachel Reed dead viz In Hamilton Co and a portion of Eight Mile Creek being part of a tract of land purchased by the said William Reed...
 Vol. 151 p. 151-152 May 9 1849-1850 Partion of Estate of Rachel Reed dead viz In Hamilton Co and a portion of Eight Mile Creek being part of a tract of land purchased by the said William Reed...



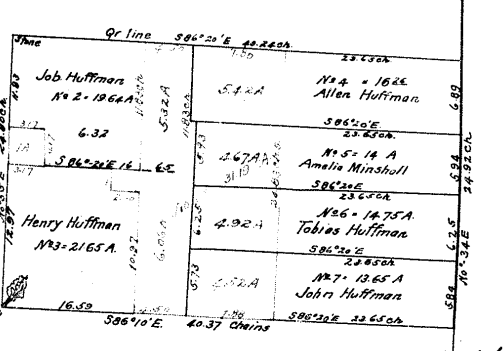
Vol. 151 p. 141-142 (Nov. 11 1848-70 7/4) Partion of Estate of Ebenezer Reed...
 Vol. 151 p. 143-144 (Nov. 11 1848-70 7/4) Partion of Estate of Ebenezer Reed...
 Vol. 151 p. 145-146 (Nov. 11 1848-70 7/4) Partion of Estate of Ebenezer Reed...



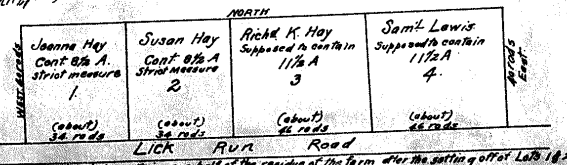
Vol. 151 p. 237-240 (Nov. 9 1848-70 7/4) Partion of Estate of William Macdowell...
 Vol. 151 p. 241-244 (Nov. 9 1848-70 7/4) Partion of Estate of William Macdowell...
 Vol. 151 p. 245-248 (Nov. 9 1848-70 7/4) Partion of Estate of William Macdowell...



Vol. 151 p. 249-250 (Nov. 9 1848-70 7/4) Partion of Estate of George Hay...
 Vol. 151 p. 251-254 (Nov. 9 1848-70 7/4) Partion of Estate of George Hay...
 Vol. 151 p. 255-258 (Nov. 9 1848-70 7/4) Partion of Estate of George Hay...



Vol. 151 p. 259-260 (Nov. 9 1848-70 7/4) Partion of Estate of George Hay...
 Vol. 151 p. 261-264 (Nov. 9 1848-70 7/4) Partion of Estate of George Hay...
 Vol. 151 p. 265-268 (Nov. 9 1848-70 7/4) Partion of Estate of George Hay...



Lot No. 3 1/2 contains one half of the residue of the farm after the setting off of Lots 1 & 2.