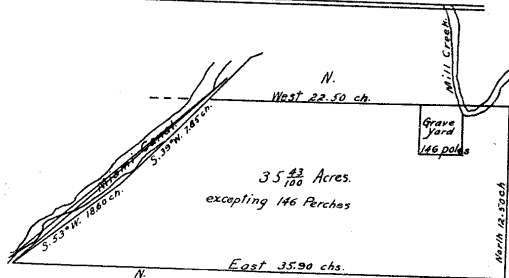


108

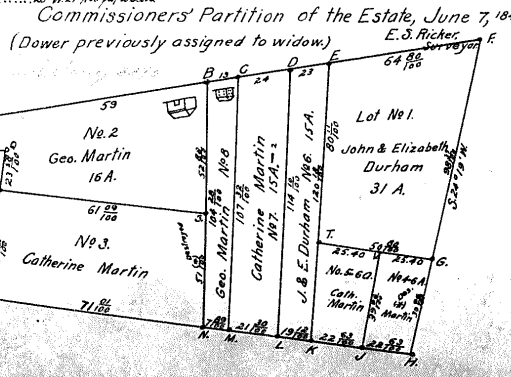
Vol. 113 pp. 57-71 (July 5, 1845-1847) Nancy Van Sandt widow of John Van Sandt in chancery for her share in the estate of her husband...



Lower Communion stations planted on the Sec. line at 16. corners of parcels described, these 7 on the line 1200 sq. ft. on the line near the S. bank of Mill Creek...

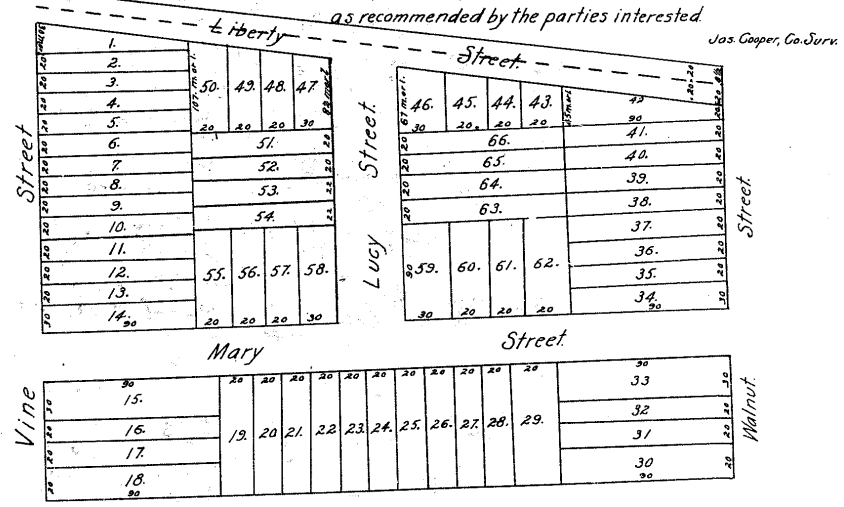
Vol. 113 pp. 100-105 (Aug. 1, 1845, 1848) Mary Weston widow of James Weston in chancery for partition of the full land of which she was in her own right...

Vol. 143 pp. 342-346 (Oct. 7, 1848-1849) Commissioners' Partition of the estate of John Moore...



Vol. 143 pp. 252-270 (Oct. 7, 1848-1849) Hugh H. Moore in chancery for the partition of the estate of his wife Mary (Symmes)...

Commissioners' Subdivision of Out Lot No. 37, City of Cincinnati



In Out-lot No. 37 Commissioners assigned To Hugh H. Moore the 1st share viz lots 14, 58, 41, 13, 22, 29, 30, 37, 57, 52, 41, 42, 65, 61...

Commissioners' Subdivision of In Lot No. 62, orig. plan of Cincinnati on west side of Sycamore St. bet. 4th & 3rd Sts.

