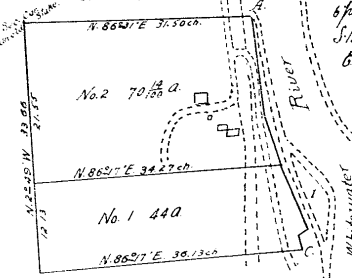
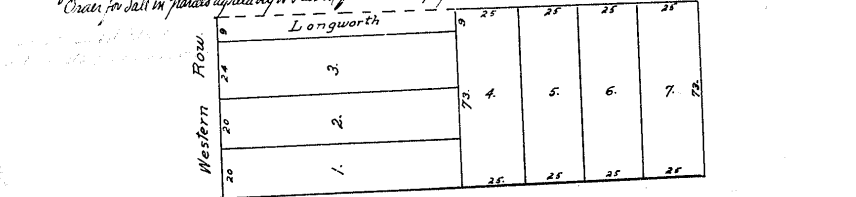


Def. 134 of 7/18/1847 (July 7, 1847) Estate of Samuel Bond, dec'd to wit: The Sec. 10 & 11 of W. 1/2 of Sec. 2, T. 1, R. 1, E. 77 1/2
 1) about 121 acres & 74 perches in 1/2 - covered by 17, 18, 19, 20
 2) 126 perches to be taken in 1/2 W. 1/2 of Sec. 2, T. 1, R. 1, E. 77 1/2
 side of the above to meet the line of the Mill Race...
 3) Beginning at a stone in the S. 1/2 of Sec. 2, T. 1, R. 1, E. 77 1/2...
 4) Beginning at a stone in the S. 1/2 of Sec. 2, T. 1, R. 1, E. 77 1/2...
 In Sec. 17, T. 1, R. 1, E. 77 1/2



In Sec. 6, T. 1, R. 1, E. Survey Partition Made by Commissioners June 15, 1846. Cause & dist. from G. & Q. 11, 16, 25 W. 0.45. 11, 16, 25 W. 7.27. 11, 25, 23 W. 2.47. 11, 25, 23 W. 6.16 ch.
 This entire tract will not hold without running into the Mill Race...
 No. 5 57 7/8 a. No. 4 19 a. No. 3 9 a. m. l. 18 76.
 East Sec. 5, T. 1, R. 1, E.

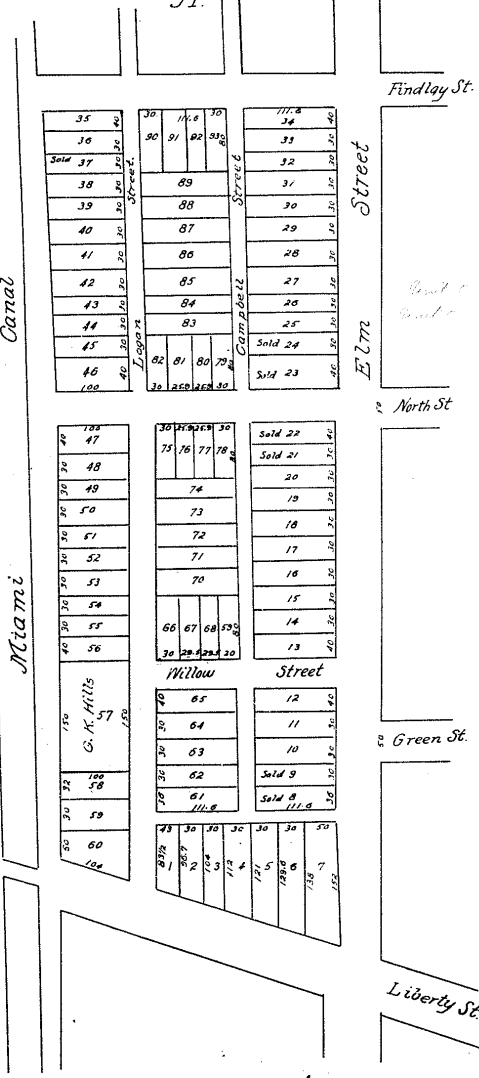
Def. 134 of 7/18/1847 (July 7, 1847) 9299 (1845) Joseph Shaver Freehold 2 Mortgages given by Oliver M. Shaver on house & lot in Cincinnati...
 1) 6 1/2 ft. down & 1/2 ft. up...
 2) 2 1/2 ft. down & 1/2 ft. up...
 3) 2 1/2 ft. down & 1/2 ft. up...
 4) 2 1/2 ft. down & 1/2 ft. up...
 5) 2 1/2 ft. down & 1/2 ft. up...
 6) 2 1/2 ft. down & 1/2 ft. up...
 7) 2 1/2 ft. down & 1/2 ft. up...
 8) 2 1/2 ft. down & 1/2 ft. up...
 9) 2 1/2 ft. down & 1/2 ft. up...
 10) 2 1/2 ft. down & 1/2 ft. up...
 11) 2 1/2 ft. down & 1/2 ft. up...
 12) 2 1/2 ft. down & 1/2 ft. up...
 13) 2 1/2 ft. down & 1/2 ft. up...
 14) 2 1/2 ft. down & 1/2 ft. up...
 15) 2 1/2 ft. down & 1/2 ft. up...
 16) 2 1/2 ft. down & 1/2 ft. up...
 17) 2 1/2 ft. down & 1/2 ft. up...
 18) 2 1/2 ft. down & 1/2 ft. up...
 19) 2 1/2 ft. down & 1/2 ft. up...
 20) 2 1/2 ft. down & 1/2 ft. up...
 21) 2 1/2 ft. down & 1/2 ft. up...
 22) 2 1/2 ft. down & 1/2 ft. up...
 23) 2 1/2 ft. down & 1/2 ft. up...
 24) 2 1/2 ft. down & 1/2 ft. up...
 25) 2 1/2 ft. down & 1/2 ft. up...
 26) 2 1/2 ft. down & 1/2 ft. up...
 27) 2 1/2 ft. down & 1/2 ft. up...
 28) 2 1/2 ft. down & 1/2 ft. up...
 29) 2 1/2 ft. down & 1/2 ft. up...
 30) 2 1/2 ft. down & 1/2 ft. up...
 31) 2 1/2 ft. down & 1/2 ft. up...
 32) 2 1/2 ft. down & 1/2 ft. up...
 33) 2 1/2 ft. down & 1/2 ft. up...
 34) 2 1/2 ft. down & 1/2 ft. up...
 35) 2 1/2 ft. down & 1/2 ft. up...
 36) 2 1/2 ft. down & 1/2 ft. up...
 37) 2 1/2 ft. down & 1/2 ft. up...
 38) 2 1/2 ft. down & 1/2 ft. up...
 39) 2 1/2 ft. down & 1/2 ft. up...
 40) 2 1/2 ft. down & 1/2 ft. up...
 41) 2 1/2 ft. down & 1/2 ft. up...
 42) 2 1/2 ft. down & 1/2 ft. up...
 43) 2 1/2 ft. down & 1/2 ft. up...
 44) 2 1/2 ft. down & 1/2 ft. up...
 45) 2 1/2 ft. down & 1/2 ft. up...
 46) 2 1/2 ft. down & 1/2 ft. up...
 47) 2 1/2 ft. down & 1/2 ft. up...
 48) 2 1/2 ft. down & 1/2 ft. up...
 49) 2 1/2 ft. down & 1/2 ft. up...
 50) 2 1/2 ft. down & 1/2 ft. up...
 51) 2 1/2 ft. down & 1/2 ft. up...
 52) 2 1/2 ft. down & 1/2 ft. up...
 53) 2 1/2 ft. down & 1/2 ft. up...
 54) 2 1/2 ft. down & 1/2 ft. up...
 55) 2 1/2 ft. down & 1/2 ft. up...
 56) 2 1/2 ft. down & 1/2 ft. up...
 57) 2 1/2 ft. down & 1/2 ft. up...
 58) 2 1/2 ft. down & 1/2 ft. up...
 59) 2 1/2 ft. down & 1/2 ft. up...
 60) 2 1/2 ft. down & 1/2 ft. up...
 61) 2 1/2 ft. down & 1/2 ft. up...
 62) 2 1/2 ft. down & 1/2 ft. up...
 63) 2 1/2 ft. down & 1/2 ft. up...
 64) 2 1/2 ft. down & 1/2 ft. up...
 65) 2 1/2 ft. down & 1/2 ft. up...
 66) 2 1/2 ft. down & 1/2 ft. up...
 67) 2 1/2 ft. down & 1/2 ft. up...
 68) 2 1/2 ft. down & 1/2 ft. up...
 69) 2 1/2 ft. down & 1/2 ft. up...
 70) 2 1/2 ft. down & 1/2 ft. up...
 71) 2 1/2 ft. down & 1/2 ft. up...
 72) 2 1/2 ft. down & 1/2 ft. up...
 73) 2 1/2 ft. down & 1/2 ft. up...
 74) 2 1/2 ft. down & 1/2 ft. up...
 75) 2 1/2 ft. down & 1/2 ft. up...
 76) 2 1/2 ft. down & 1/2 ft. up...
 77) 2 1/2 ft. down & 1/2 ft. up...
 78) 2 1/2 ft. down & 1/2 ft. up...
 79) 2 1/2 ft. down & 1/2 ft. up...
 80) 2 1/2 ft. down & 1/2 ft. up...
 81) 2 1/2 ft. down & 1/2 ft. up...
 82) 2 1/2 ft. down & 1/2 ft. up...
 83) 2 1/2 ft. down & 1/2 ft. up...
 84) 2 1/2 ft. down & 1/2 ft. up...
 85) 2 1/2 ft. down & 1/2 ft. up...
 86) 2 1/2 ft. down & 1/2 ft. up...
 87) 2 1/2 ft. down & 1/2 ft. up...
 88) 2 1/2 ft. down & 1/2 ft. up...
 89) 2 1/2 ft. down & 1/2 ft. up...
 90) 2 1/2 ft. down & 1/2 ft. up...
 91) 2 1/2 ft. down & 1/2 ft. up...
 92) 2 1/2 ft. down & 1/2 ft. up...
 93) 2 1/2 ft. down & 1/2 ft. up...
 94) 2 1/2 ft. down & 1/2 ft. up...
 95) 2 1/2 ft. down & 1/2 ft. up...
 96) 2 1/2 ft. down & 1/2 ft. up...
 97) 2 1/2 ft. down & 1/2 ft. up...
 98) 2 1/2 ft. down & 1/2 ft. up...
 99) 2 1/2 ft. down & 1/2 ft. up...
 100) 2 1/2 ft. down & 1/2 ft. up...



Plain side of lot - full stayed - Case ordered dismissed

Def. 126 of 7/18/1847 (Nov. 2, 1845 - No. 173) Partition of Estate of Cephalus D. Seward
 1) all the lots & squares in Madison Street...
 2) all the lots & squares in Madison Street...
 3) all the lots & squares in Madison Street...
 4) all the lots & squares in Madison Street...
 5) all the lots & squares in Madison Street...
 6) all the lots & squares in Madison Street...
 7) all the lots & squares in Madison Street...
 8) all the lots & squares in Madison Street...
 9) all the lots & squares in Madison Street...
 10) all the lots & squares in Madison Street...

In the Northern Liberties of Cincinnati



On Front street and Columbia Street 154 ft. also all that ground situated between the two corners of Columbia street...
 cop 76.4 comp 55