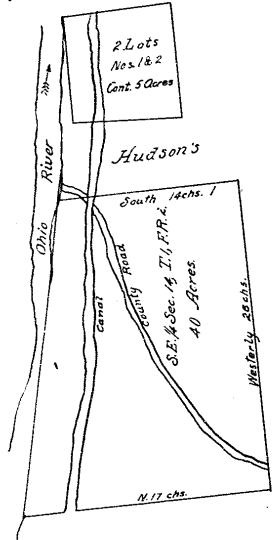
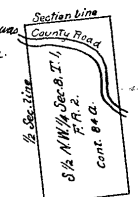


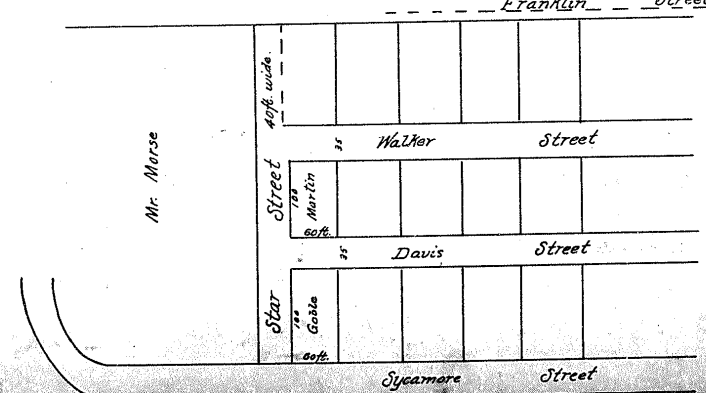
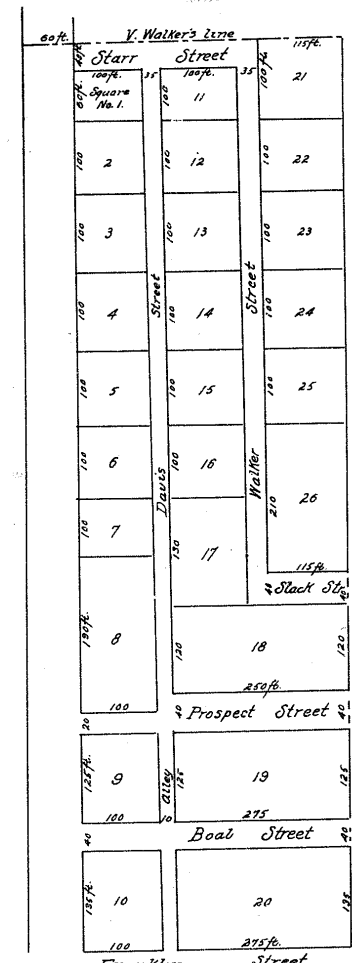
Vol. 117, pp. 500-507 (Nov. 1844 - No. 263) Administration of Estate of Herman Seidlich dec'd viz: S. 1/2 N. 1/4 Sec. 8, T. 1, R. 2, M.P. (87a) also lots 1 & 2 of Plat of Tillage of North Bend contain 5 acres. Also 40 acres being part of S.E. 1/4 Sec. 14, T. 1, R. 2 as above. Beginning of the Ohio at S.E. cor. Hudson's lots of land running N. on Hudson's line 1/4 chain across the county road, then S. to the Ohio at the Ohio to place of Beginning across in the Plat of Andrew J. Porter made June 12, 1843 viz:



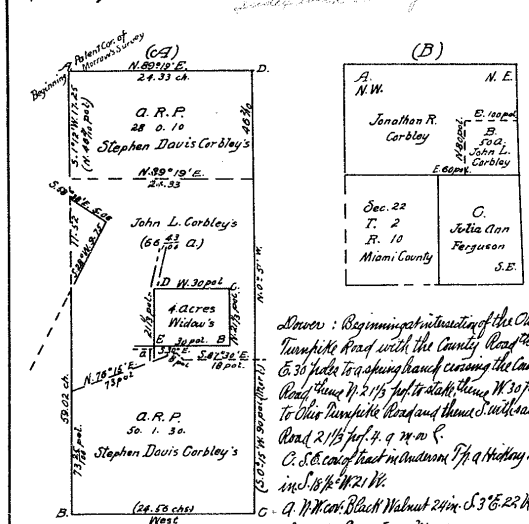
At Administration of June 10, 1844, the 8 1/2 acres tract was shut off in favor of the Ohio to 1/2 mi. N. of Bond's and Porter. The 40 acre tract not set off for want of address.



Vol. 117, pp. 470-475 (Nov. 1844) No. 196 Vacation of Star Street in the Hudson Subdivision to Cincinnati laid out in the Mansfield Subdivision running from Symmes st. situated North of City East to Walker street 40 ft wide 700 ft part of said tract and adjoining H. Morse's lot. Copy of Plat. Recorded Book 84, page 138.



Vol. 126, pp. 44-51 (Feb. 1, 1845) No. 482 Partition of estate of Stephen Corbly dec'd viz: On Anderson Township: Beginning at a Sugar Oak, Buckeye - White Walnut corner the land belongs to S.B. Miller. Thence S. 100 ft, with said Miller line to a stone corner by White Walnut tree corner to said Corbly's land thence S. 200 ft, to a stone corner by a log house corner to said Corbly, Jonathan Spear & Thos. Graham, thence N. with Anderson line, 100 ft to white oak, blue ash & Hickory, thence N. 200 ft to place of Beginning. Contain. 150.9 m. conveyed by Stephen Corbly to Stephen Davis (Book B. No. 7, p. 517) by name adjacent to Stephen Corbly. Also see plat in Miami County. Plat of Carleton & a part of Morse as connected to by the parties and for Commission Report.



- A. Patent corner of Morse's Survey
 - B. a Stone
 - C. a Hickory
 - D. White Walnut
- 148 2/20 a. r.

Vol. 126, pp. 363-372 (Nov. 1845 - No. 333) Sale of household contents of John Mansfield dec'd viz: 72 ft front on N.W. side of High Street - extend back 17 1/2 ft, the same with minor area front along the N.W. side of front about 100 ft in width and extend to the 1/2 ft from the corner of the Miami Canal - one of High & High Street to be used in part for a way to the corner of the canal as measured by the State of Ohio subject to ground rent & interest of 8% a year, semi-annually paid. Bids for 999 days from Nov. 1836.

