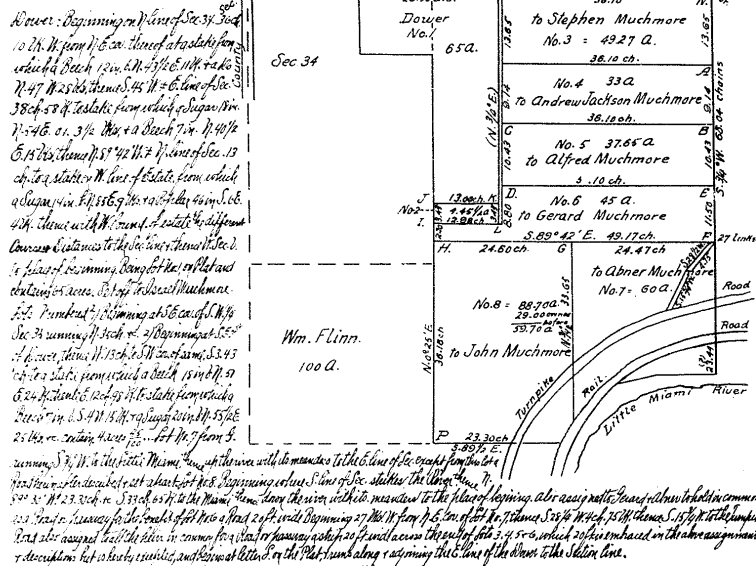
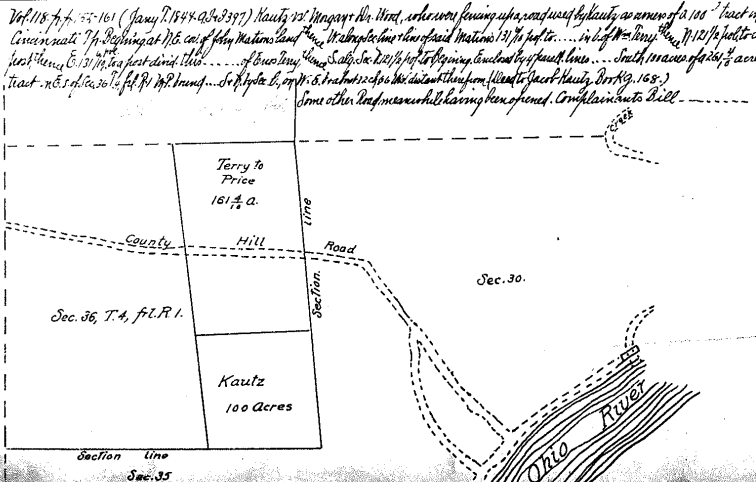


84 Vol. 117 pp. 490-502. (Nos. 71844 - 71863) Partition of Estate of Daniel Muchmore, viz. about 342 acres in
 Sec. 34, T. 4, R. 2, M.P. also a tract, beginning at S. Corner of S. High
 Sec. 35 S. E. P. Thence N. 40 rods thence N. 14 rods thence S. 40 rods & thence
 100 r to beginning 35. A. S. M.

Daniel Muchmore's Estate
 in Sections 34 & 35, T. 4, R. 2, M.P.
 John L. Hoobrow Ham. Co. Sur. Nov. 1844.
 Sec. 35
 35th Road



- Witnesses.**
- A. Sugar 32 in. S. 17. N. 26. W. 88 1/2
 - B. Sugar 17 in. S. 17. N. 26. W. 88 1/2
 - C. Apple tree 10 in. S. 13. E. 6
 - D. Beech 12 in. N. 14 1/2. W. 141
 - E. W. Oak 24 in. N. 81 1/2. E. 98
 - F. Cedar 23 in. S. 21. W. 28
 - G. Sugar 14 in. S. 17. N. 26. W. 88 1/2
 - H. Sugar 14 in. S. 17. N. 26. W. 88 1/2



From Folio. 85 Ferris Estate.

Winn. sugar 22 in. N. 26° W. 88 1/2 K. thence S. 13 E. 16 ch. 13 K. to stake in the clear road thence N. 26 E. 1 ch.
 50 K. thence N. 41 E. 6.73 ch. thence N. 11 W. 11 ch. 64 K. to a stake witness: apple tree S. 13 E. in the line 6 K. thence S. 77°
 W. 5 ch. 50 K. to place of beginning cont. 10 rods except 2 rods represented by dotted line 10 ft. of W side
 of lot 28 & 29 ch. on S. side of lot 161 as herein before assigned To Catharine B. Drake lot 163 beginning
 at a stake from which the N. E. cor. of the old lot 11 is the cor. of the new parcel S. 17 E. 48 1/2 thence S. 17 E. 1 ch. 50 K. thence
 S. 77 W. 2 ch. 14 K. to a stake witness a sugar 22 in. N. 26 W. 88 1/2 K. thence N. 13 W. 50 K. to a stake witness a sugar
 2. S. 46 W. 22 K. 14 K. to a stake witness a sugar 22 in. N. 26 W. 88 1/2 K. thence N. 13 W. 50 K. to a stake witness a sugar
 thence N. 30 E. 1 ch. thence N. 87 20 E. 7 ch. 25 K. to a stake witness an Elm. 25 in. N. 82° W. 30 K. B. Walnut 9 in. S. 70°
 E. 8 K. thence N. 30 E. 10 ch. thence N. 77 20 E. 2 ch. thence N. 37 50 E. 49 K. thence S. 30 W. N. 15 ch. 17 K. thence S. 77 W.
 4 ch. 38 K. to beginning 18 acre. To John Ferris. lot N. E. beginning 10 ch. S. from E. cor. of S. W. Sec. 33 at a
 stake from which B. Walnut 10 in. S. 35 E. 78 K. thence S. 24 ch. 6 K. to center of the clear road. thence S. 47 35 W. 8 ch.
 1 K. thence N. 13 W. 11 ch. 44 K. to a stake witness an apple tree 10 in. S. 13 E. 6 K. thence S. 77 W. 1 ch. 12 K. thence N. 30 E.
 15 ch. 17 K. thence N. 37 20 E. 9 ch. 57 K. to place of beginning cont. 22 q. To Maria F. Ferris lot No. 5 be-
 ginning 40 ch. E. from the W. line T. 40 ch. N. from S. line of sec. 22 thence N. 1 ch. 40 K. thence S. 87 25 E. 7 ch. 50 K. to stake
 thence S. 23 ch. 40 K. to center of clear road witness: W. Oak 18 in. N. 29 1/2 E. 61 K. thence S. 47 35 W. 10 ch. 25 K. thence N.
 24 ch. 6 K. to stake witness. B. Walnut 10 in. S. 35 E. 78 K. thence S. 57 20 W. 4 ch. thence N. 30 E. 10 ch. thence N. 87 20
 E. 4 ch. to place of beginning 25 2/3 acre. To Ezra H. Ferris lot No. 6 beginning at a stake in center of the
 clear road from which a W. Oak 18 in. N. 29 1/2 E. 61 K. thence N. 28 ch. 40 K. to a stake against the W. end of a W.
 Oak 36 in. N. 40 in. S. 24 W. 44 K. thence S. 87 45 E. 4 ch. 81 K. to stake witness: Beech 14 in. S. 68 E. 25 K. W. 14 in. N. 66 1/2
 E. 46 K. thence S. 40 K. to stake witness W. Oak 30 in. N. 61 1/2 W. 57 K. Beech 16 in. N. 8 E. 21 K. thence N. 87 3/4
 E. 8 ch. 20 K. to a stake witness: apple tree 5 in. S. 30 W. 15 K. thence S. 16 ch. 20 K. to stake in center of clear road witness
 B. Walnut 12 in. N. 8 1/2 W. 141 W. Oak 24 in. N. 81 1/2 E. 98 K. thence S. 47 35 W. 17 ch. 39 K. to place of beginning
 28 7/8 acre. To Wm. F. Ferris lot 7 & 8. lot 7 beginning 3 ch. 94 K. W. from N. E. cor. of S. E. 1/4 Sec. 33 thence
 with the N. line of the quarter S. 87 3/4 W. 15 ch. thence S. 16 ch. 20 K. to center of clear road witness: B. Walnut 12 in.
 N. 8 1/2 W. 141 W. Oak 24 in. N. 81 1/2 E. 98 K. thence with cont. of the road N. 47 35 E. 2 ch. 22 K. to beginning
 14 1/2 acre. lot 8 beginning in S. line of sec. in center of clear road. thence N. 47 35 E. 2 ch. 75 K. to S. corner
 of the section. Jeremiah Mearns lot 10 thence S. 73 1/2 E. 2 ch. 80 K. to a stake witness: B. Walnut 5 in. S. 17 W. 34
 K. thence S. 25 W. in W. 13 ch. 55 K. W. Oak with thence S. 87 20 W. 18 ch. 73 K. to place of beginning 15 1/2 acre.

- Witnesses.**
- A. Sycamore. 40 in. S. 57. E. 44 W.
 - Beech 8 in. S. 66. E. 36 "
 - B. Sugar 22 in. N. 26. W. 88 1/2 "
 - C. Sugar 22 in. S. 46. W. 22 "
 - D. B. Walnut 12 in. N. 8 1/2. W. 141 "
 - W. Oak 24 in. N. 81 1/2. E. 98 "
 - E. apple tree 10 in. S. 13. E. 6 "
 - F. W. Oak 18 in. N. 29 1/2. E. 61 "
 - G. B. Walnut 10 in. S. 35. E. 78 "
 - H. cor. S. W. side of W. Oak 36 in.
 - W. Oak 40 in. S. 24. W. 44 "
 - I. apple tree 5 in. S. 30. W. 15 "
 - J. cor. of both Bona S. 17. E. 48 "
 - K. B. Walnut 5 in. S. 19. W. 34 "
 - L. Elm 28 in. N. 82. W. 30 "
 - B. Walnut 9 in. S. 70. E. 8 "
 - M. W. Oak 30 in. N. 61 1/2. W. 5 "
 - Beech 16 in. N. 8. E. 21 "
 - N. Beech 14 in. S. 68. E. 28 "
 - do 14 in. N. 66 1/2. E. 46 "
 - (Both bearing old on marks)
 - O. W. Oak 30 in. N. 14. W. 18 "
 - dr. 36 in. N. 72. E. 47 "