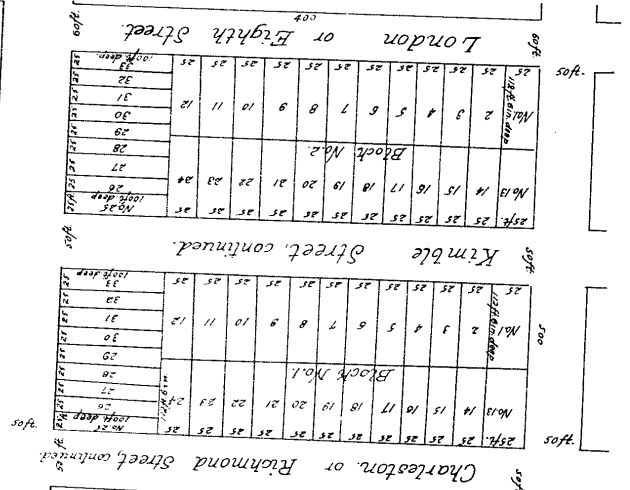


1911-1912 (1911-1912) Nicholas Longworth... The claim of mortgage given for purchase money by said Longworth...



Plan of said of the premises to Nicholas Longworth, but subject to...

and the same... and the same... and the same... and the same...

Commissioner's Report of Partition of Estate of Philip Turpin Continued from Page 65.

and we do set off and assign to his share. To Edward J. Turpin, Lot No. 1. Commencing at a Mulberry in N.E. cor. of said lot running S. 2° 55' W. 42 ch. 65 to stake...

40 d. to a stone, thence N. 87° 05' W. 15 ch. 66 d. to a stake, thence S. 70 1/4° W. 2 ch. 55 to a stake, thence S. 56 1/2° W. 3 ch. 57 to a stake, thence N. 72 ch. 69 ch. 22 to the Little Miami and passing a stone in the line near said river...

To Amey P. Turpin, Lot No. 4. Commencing at a stake in the bank of the Little Miami in the N.E. cor. of said lot and the N.W. cor. of lot No. 3, near a stone set in the line between said lots running thence South 64 ch. 25 d. to a stone...

To Mary C. Turpin, Lot No. 5. Commencing at a stake in bank of the Little Miami in the N.E. cor. of said lot and the N.W. cor. of lot No. 4 near a stone set in the line between said lots...

To Philip R. Turpin, Lot No. 6. Commencing at a stake in the bank of Little Miami in the N.E. cor. of said lot and the N.W. cor. of lot No. 5 near a stone set in the line between said lots...

To Edward J. Turpin, Lot No. 2. Commencing at a stone in N.E. cor. of said lot and in N.W. cor. of lot No. 1 running S. 39 ch. 60 d. to a stake, thence S. 78 1/2° W. 3 ch. 5 1/2 d. to a fork of Honeycreek, thence N. 57° 05' W. 78 ch. 41 d. to a stone...

To Robert C. Turpin, Lot No. 3. Commencing at a stone in N.E. cor. of said lot and in N.W. cor. of lot No. 2 running S. 38 ch. 60 d. to a stake, thence N. 78 1/2° E. 10 ch. 15 d. to beginning 89 1/2 a. subject to drow.