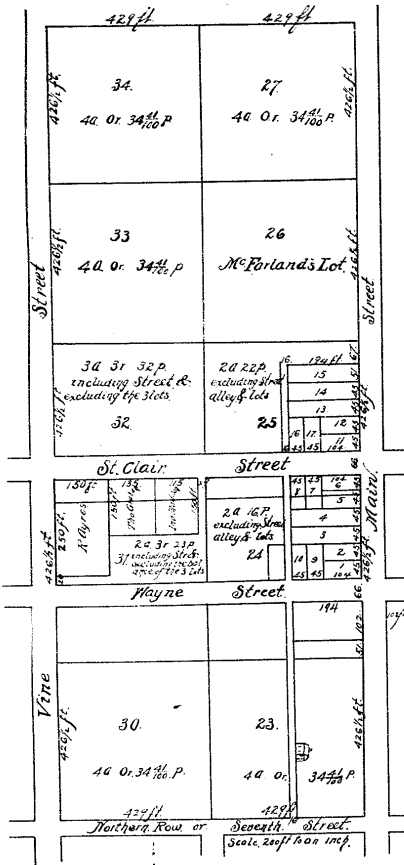
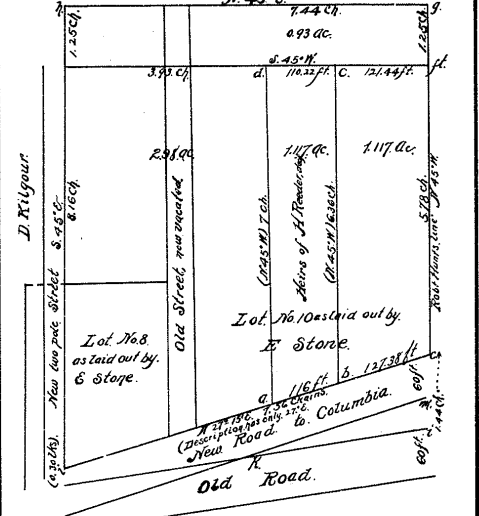


The Lots and Lands sold for Administrator Aug 1823 but account does not say to whom.



Vol. 48, Page 1-3 Partition of estate of Stephen Wheeler Sr. dec'd. Let's begin East & above Row 10 on the plan of lot laid out by Ethan Strong...

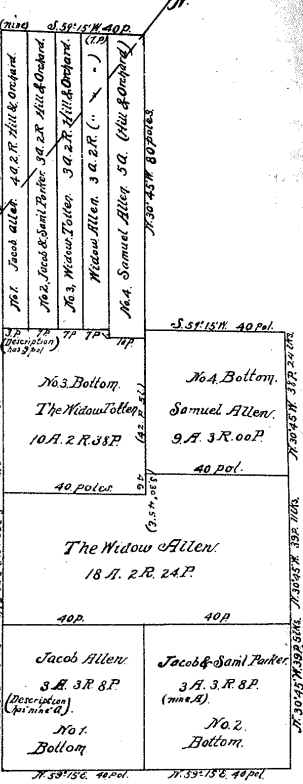


Beginning at a point 127.31 feet from Robert Hand's line, thence N 71° C. ...

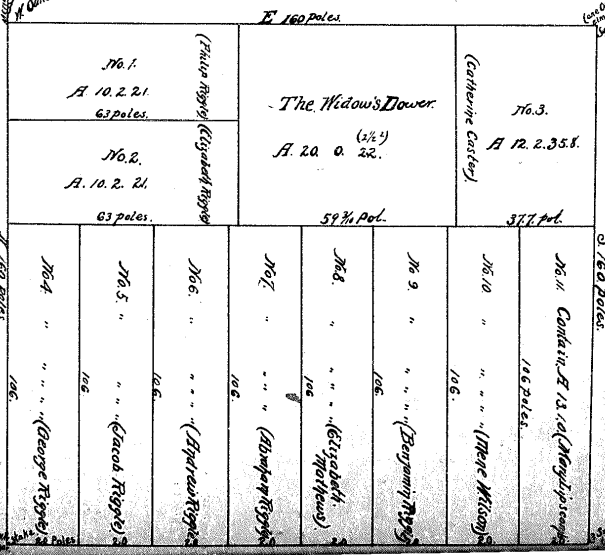
at a stake in the turn of the fence, the said S. W. by Cor of the said Lewis's lot, thence running N. 30° 45' W. 80 poles to an Elm...

Pages 271-274 Partition of estate of Joseph Allen dec'd Aug. 80.

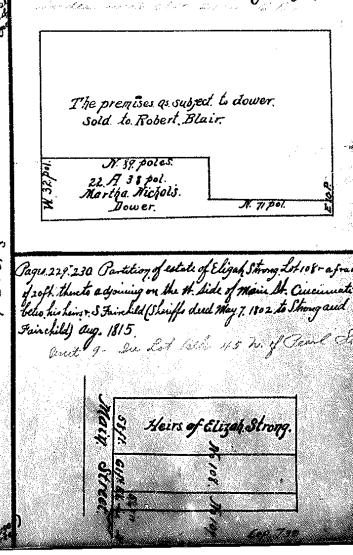
Area in Columbia of the Meadows part of the Hill Orchard lands beginning at a stake 19 poles S. 59° 15' W. from the W. by Cor of M. W. ...



Pages 275-277 Partition of estate of George Riggle dec'd Aug. 1813. Containing 160 acres.



Pages 279-280 Partition of estate of Francis Nichols dec'd Aug. 100 acres in Syracuse N.Y.



Pages 285-286 Partition of estate of Caleb Simons dec'd Aug. 100 acres ...

