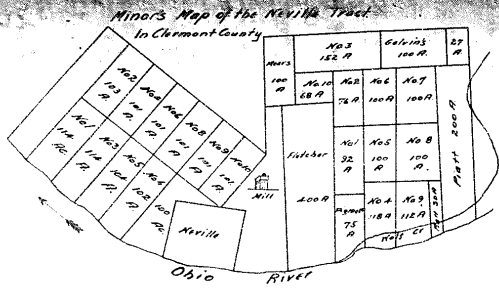
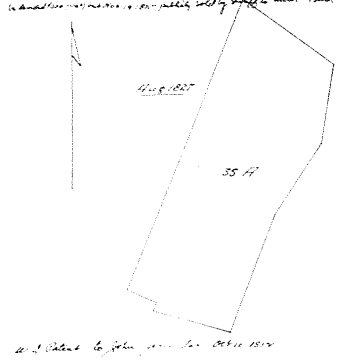
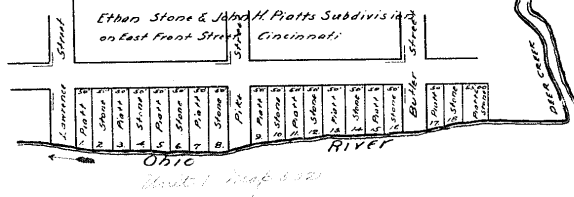


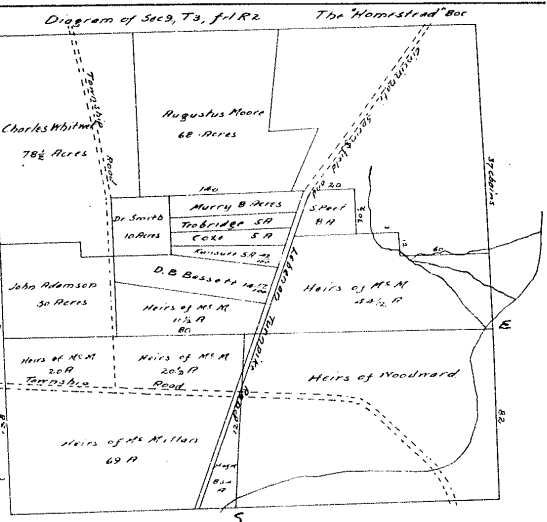
61 207 320 320 Section of field of John Jones ...



Pages 419-424 of case of John H. Child vs. ...



Vol 5 p 267-271 (Philadelphia Dec 1835) for Partition of ...



Vol 5 p 267-271 (Philadelphia Dec 1835) for Partition of ...

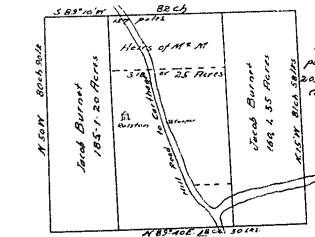
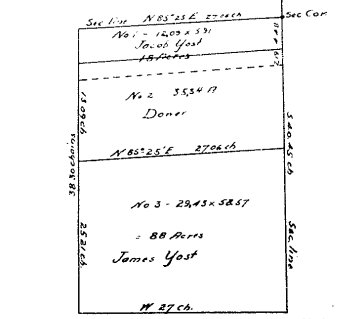


Diagram of Sec 14, T 3, R 2, as partitioned by Commissioners May 20 1820.

Set off to Andrew W. Millan dependent on his share of 1/2 of all the premises in question...