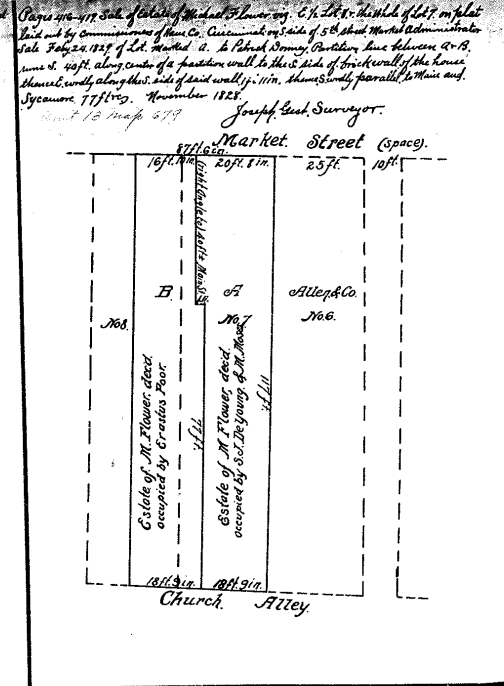
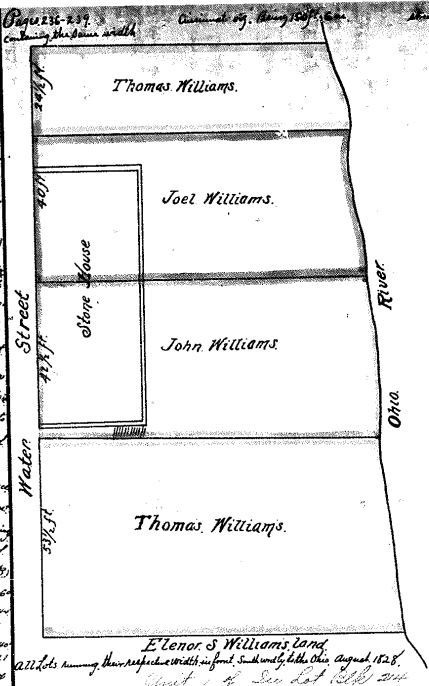


38

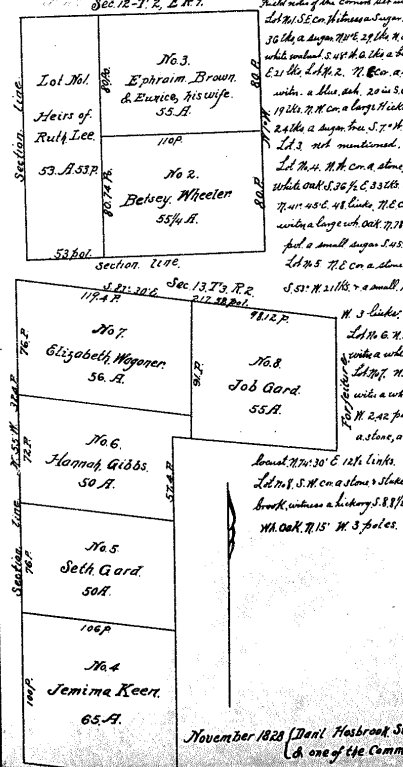
Pages 375-381 Partitions of estate of Henry Thomas... 208 Admin. 1720 AD...
Part 1 of Contending T. B. H. H. T. F.
(Exempld. Joseph and Andrew Ferns)



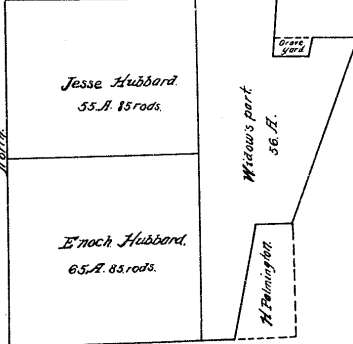
Pages 331-335 Partitions of the N. 1/4 Sec. 17, T. 4 S. and R. 2 W. P. of John Hulbert...

Plat of Commissioner's Partition

No. 1	No. 2	No. 3	No. 4	No. 5	No. 6
13 A	13 A	45 A	12 3/4 A	15 7/8 A	12 5/8 A
Thomas Hulbert	John Hulbert	Widow's Dower	John Hulbert	Charles Hulbert	Ann Hulbert
			No. 6. 13 3/4 A. Elizabeth Clark.	No. 5. 13 3/8 A. Sarah Robinson.	No. 4. 13 3/8 A. Cyrus Hulbert.
14 3/8 A. Branch Bank of the U.S.					



Pages 413-416 Partitions of estate of John Hubbard, wif. his farm in Bethel Township...



Beginning at N. W. Cor. of Graveyard, thence S. 86 1/2 E. 3 1/2 rods 16 1/2 rods...
November 1828 [Dani. Hasbrouk Surveyor.]
A. one of the Commissioners.

copy 739
copy 750