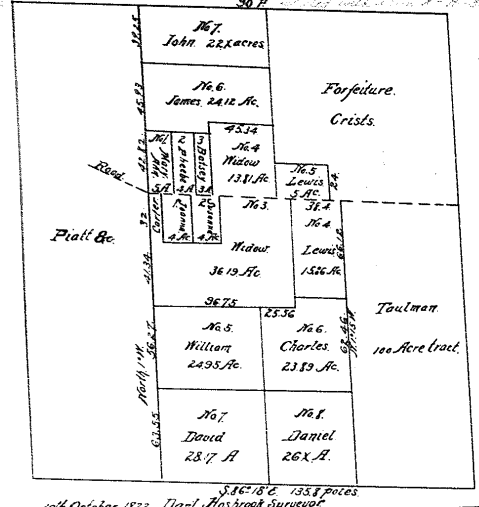
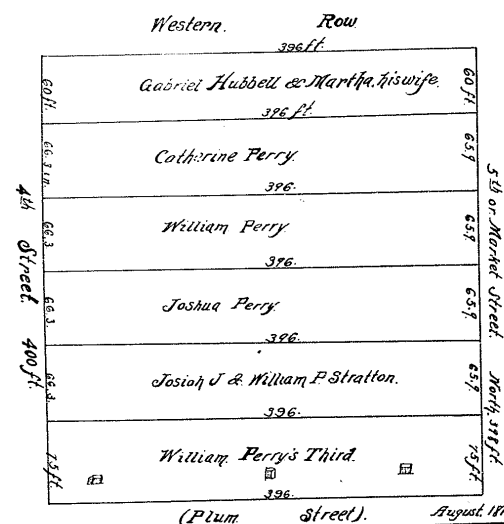


34 Pages 412-415 Partition of estate of David Johnson dead being about 240 acres in Sec. 2, T. 4, R. 1, M. 2
Commissioner's Partition
 30 P.



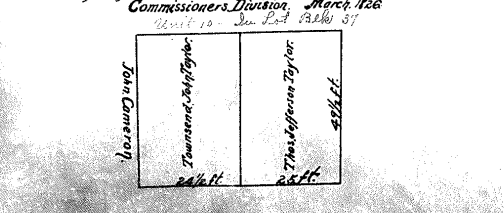
104 October, 1822. Darl. Hasbrook Surveyor

Pages 418-420 Partition of estate of William Perry lot in the town field of Circumville
 No. 360 365 366 367 368 369 370 371 372 each containing 1/2 acre in front, 1/2 acre in depth
 the whole being one town bounded N by 4th St. E by Plum St. (see plat).
 Commissioners Plat of Circumville August 1814.

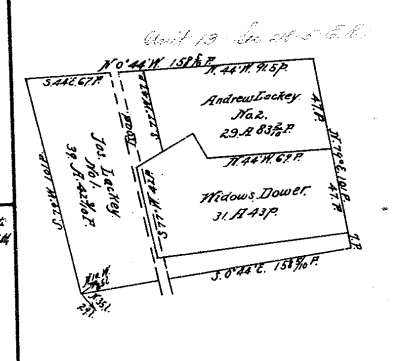


(Plum Street). August 1814.

Pages 51-60 Partition of estate of General Philip of the town field of Circumville
 Section running through the town field of Circumville bounded N by 4th St. E by Plum St. (see plat).
 to the beginning, along N. 1/2 of said lot.
Commissioner's Division March 1826
 1826 10 Jun 23 1826 57

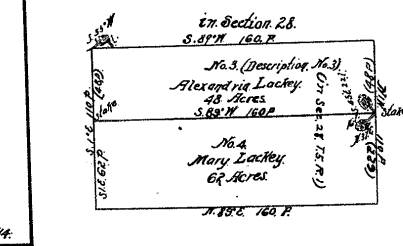


Pages 370-372 (Title of John Tom 1817) Partition of estate of Andrew
 Locky dead viz 1/2 acre in the east side of Sec. 2, T. 4, R. 1, M. 2 also 100
 acres in SE corner Sec. 2, T. 4, R. 1, M. 2. In Sec. 18.3 widow's share 80
 acres in the center of a road at a stake running S 77° 1/2' W 42.70' to the stake
 thence N 12° 35' 30" E 35.70' to the stake thence N 10° 44' W 69.7'
 thence N 77° 6' 47" E thence S 0° 40' E 100' to the place of beginning Cont. 119.4
 42 ft. Front 76.1 for James Locky, Beginning at a corner of opening the
 widow in the road running with her line N 12° 35' 30" E to stake thence 77°
 N 47' thence S 0° 40' E 67' to stake thence 77° 10' to stake N 8° 42' W
 158.5 ft. E. Corner thence 17° 10' 7" to stake at corner of widow's share
 with the line S 0° 40' E 100' to stake thence 77° 10' 7" to place of beginning
 Front 76.2 Beginning at N. 1/2 of corner of opening road in Sec. 18.3
 N 77° E 47' to stake thence with the line S 0° 40' E 69.7' to
 S 60° N 14' 14" to stake thence 27° 19' 19" to stake with line of Surveyor S 77° W 47'
 thence N 4° 44' W 91.5' to place of beginning



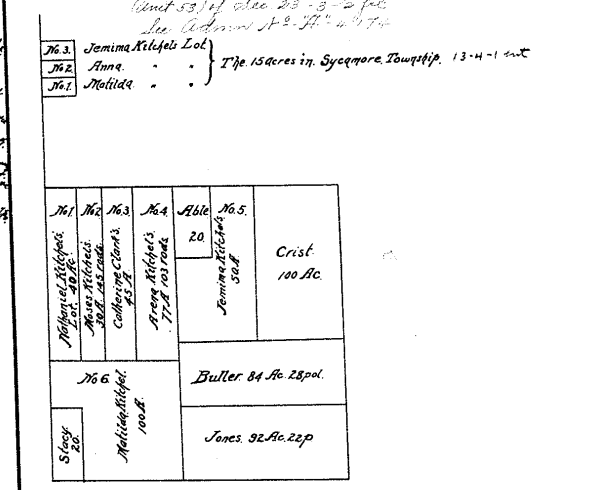
Section 28. 5.87' N 160.7'

In Sec. 3. Beginning at S.E. corner of said Sec. 76.3 at a stone white, it runs
 E 7° 35' E 27' to a peg on 6.11' N 2.5' thence 77° 10' 7" to corner of
 stone thence N 10° 44' W 151.7' thence N 77° 6' 47" E thence S 0° 40' E 151.7'
 to place of beginning Contains 100 acres. This beginning in the center of
 a stake running S 77° 1/2' W 42.7' to stake thence N 12° 35' 30" E 35.7'
 to place of beginning. Contains 119.4 ft. This beginning in center
 of road running N 12° 35' 30" E 35.7' thence 77° 10' 7" to stake



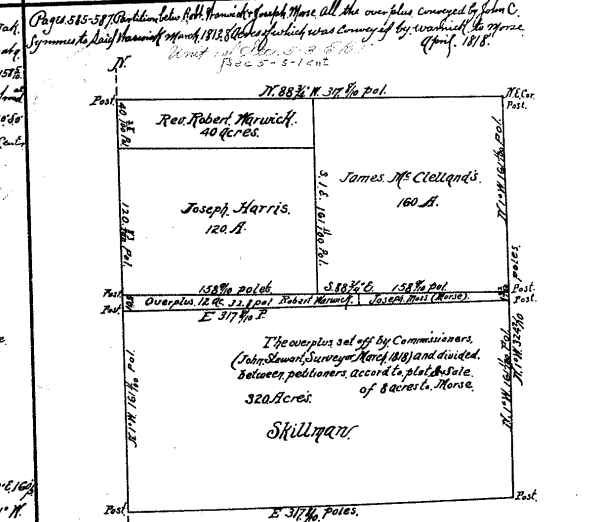
Beginning at S.E. corner House 58° N 160' 7" 110' to S 87° E 100'
 S 17° E 110' to place of beginning thence S 55° W 8' 26" to stake thence N 1° 1'
 47' thence S 89° N 160' to stake thence S 45° E 22' 26" to stake and
 77° 37' E 16' 16" August 1817 Hon. Bell Surveyor

Pages 421-423 Partition of estate of Calvin Kitchell dead viz. 36.4 acres
 in Columbia Tp. called the Kitchell Farm 7/100 acres in Mill Creek Tp. near Eghol = 23-3-2-1/2
 Hutchison Lewis together with 15 acres in Sycamore Township adjoining lands of Samuel
 Penn and others.



The 100 acres in Mill Creek Tp. set off to the late widow Mary now wife of
 David Asher 6th March 1817.

Pages 515-517 Partition of estate of Robert Harris dead viz. 160 acres
 in Columbia Tp. called the Harris Farm 7/100 acres in Mill Creek Tp. near Eghol = 23-3-2-1/2
 Harris and others.



Pages 518-520 Partition of estate of John Harris dead viz. 160 acres
 in Columbia Tp. called the Harris Farm 7/100 acres in Mill Creek Tp. near Eghol = 23-3-2-1/2
 Harris and others.

