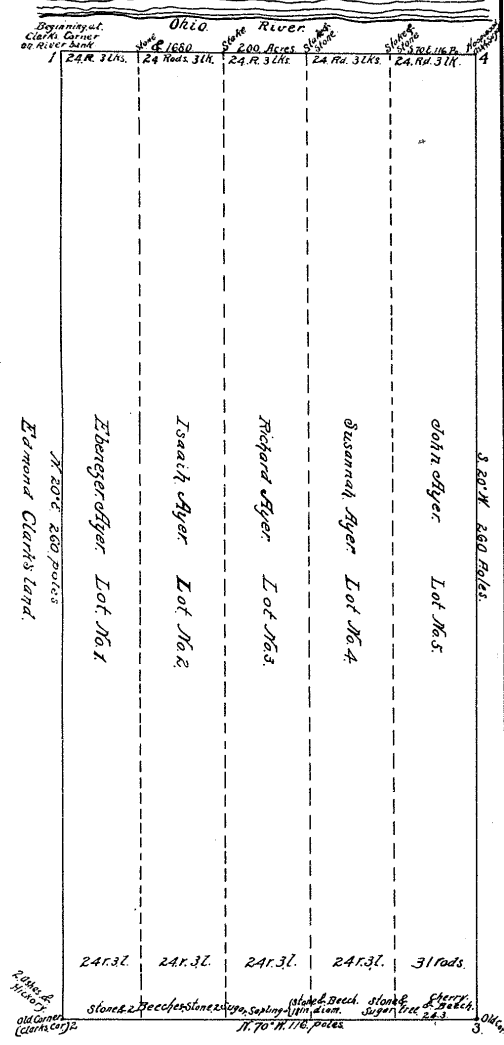
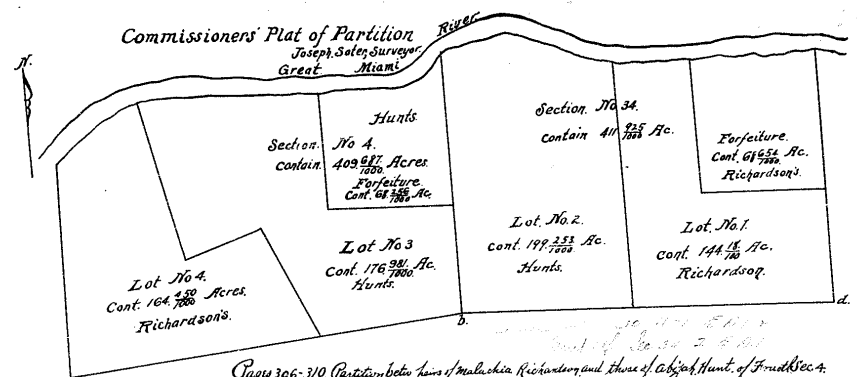
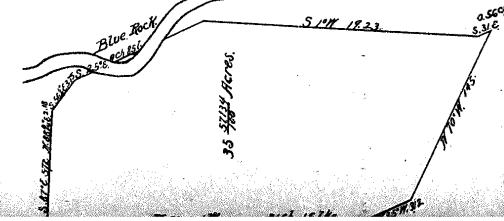


Vol. 47, Pages 275-278. Partition of estate of Ebenezer Ayer dec'd, about 1817, commencing at the South Corner of Blake Survey No. 1675 at 2. binding E. thence N. 20° E. 250 poles (accord to Patent Order of court as Plat) N. 87° W. The Decedent's Survey, manually made N. 170° E. 260 p. and S. 17° W. 260 p. April 1817, all divisions fully parcelled with Oak trees.

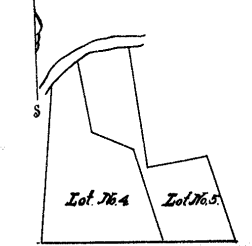


Pages 564-5 Order of court of Justice, in estate of Ebenezer Ayer, 106 2/3 acres, in 7th Co. sec. 33 of 2 E. R. 1. with M.P. for the widow Mrs. Mary Richardson, Under direction of Commissioners of Survey and Plat of June 1817, by Eli Eldon Co. Surveyor. Unit 21 of plan 33-2-581



Pages 306-310 Partition between heirs of Malachia Richardson and those of Abijah Hunt, of 3rd Sec. 4. T. 1. R. 1. E. M. P. of 3rd Sec. 34. T. 1. R. 1. E. Sec. 34, beginning at a witness on Elm 12 in diam. bear N. 114 ch. & a buckeye 7 in diam. bear N. 156 ch. & running thence N. 87° 12 1/2 ch. to an oak witness a beach 7 in diam. bear S. 33. 20 ch. distant to a Hickory 12 in diam. bear N. 60 ch. 30 ch. thence N. 87° 12 1/2 ch. to the Miami river thence up the river following the full course, thence the full course N. 60° 15' E. 4 ch. 8 1/2 ch. N. 77° E. 7. 30 ch. S. 61° 30' E. 6 ch. S. 57° 45' E. 6. 50 ch. S. 10° 45' E. 10 ch. S. 89° 15' E. 15. 50 ch. N. 50° 45' E. 8. 75 ch. S. 77° 30' E. 8 ch. S. 82° E. 6. 62 1/2 ch. N. 67° 45' E. 4 1/2 ch. N. 61° 45' E. 2. 5 ch. to a stake witness on the N. side thence S. 0° 45' E. 31. 82 1/2 ch. to place of beginning containing 411 2/16 acres. Lot No. 1. Beginning, at b. and running N. 89° 12 1/2 ch. to stake witness a mulberry 4 in diam. b. N. 151° 30' E. 13 1/2 ch. to a stake witness a Poplar 4 in diam. S. 35° 45' W. 18 1/2 ch. distant thence N. 0° 45' W. 50. 62 1/2 ch. to the river thence N. 87° 15' E. 12. 37 1/2 ch. thence N. 80° 45' E. 3. 56 ch. thence S. 0° 45' E. 17. 28 1/2 ch. to a stake with an apple tree 7 in diam. S. 15° 30' E. 18 1/2 ch. distant thence N. 87° 15' E. 16. 31 ch. to a stake with 2 oaks, one 7 in diam. & N. 61° 30' W. 18 1/2 ch. the other 10 in diam. S. 73° 30' E. 25 ch. thence S. 0° 45' E. 24. 33 1/2 ch. to place of beginning. Containing 144 1/16. Lot No. 2. Beginning, at b. witness a beach 7 in diam. S. 33. 20 ch. to a Hickory 12 in diam. b. N. 60 ch. the running N. 0° 37' N. 53. 12 1/2 ch. to the Miami thence N. 60° 15' E. 4. 87 1/2 ch. N. 77° E. 7. 30 ch. S. 61° 30' E. 6 ch. S. 57° 45' E. 6. 50 ch. S. 10° 45' E. 10 ch. S. 89° 15' E. 15. 50 ch. thence S. 0° 25' 30' E. 2 1/2 ch. to a stake witness a mulberry 4 in diam. b. N. 151° 30' E. 13 1/2 ch. and a poplar 4 in diam. S. 35° 45' W. 18 1/2 ch. thence N. 89° 12 1/2 ch. to the place of beginning containing 199 2/16 acres. Sec. 34. Beginning, at b. witness a beach 7 in diam. S. 33. 20 ch. and a Hickory 2 in diam. N. 60 ch. 30 ch. the running S. 82° 18' N. 51. 37 1/2 ch. to a stake with an oak 6 in diam. b. N. 3. E. 10 ch. and a box elder 8 in diam. S. 21° E. 4 1/2 ch. thence N. 0° 31' W. 42 ch. to the river thence up the river the following course, N. 38° E. 10. 21 1/2 ch. N. 67° E. 7. 36 ch. N. 77° E. 6 ch. N. 83° 45' E. 3. 50 ch. N. 83° E. 3. 50 ch. East 22. 50 N. 87° 15' E. 22 ch. N. 65° 15' E. 17. 5 ch. N. 41° 15' E. 5. 50 ch. N. 54° E. 3. 50 ch. thence S. 0° 37' E. 33. 12 1/2 ch. to place of beginning. 409 9/16. Lot No. 3. Beginning, at b. and running S. 82° 18' N. 28' 17 1/2 ch. to a stake witness a Hickory one 2 1/2 in diam. b. N. 52. 14. 16 1/2 ch. the other 22 in diam. N. 87° N. 23 ch. thence N. 25° 30' N. 24. 62 1/2 ch. to a stake witness a mulberry 4 in diam. b. N. 31. 2 1/2 ch. and a stake 20 in diam. N. 35. 30 N. 3 1/2 ch. thence N. 77° 17. 50 ch. to a stake witness a sugar tree 6 in diam. b. S. 78° 30' W. 17 1/2 ch. to an oak 10 in diam. b. N. 2. 5. 30 N. 40 ch. thence N. 141° 33 ch. to the river thence up the river N. 77° E. 2. 25 ch. N. 53° E. 3. 50 ch. East 21. 50 ch. N. 87° 15' E. 27 1/2 ch. S. 0° 37' E. 24. 55 ch. to a stake with a Lime 4 in diam. b. N. 61° 30' E. 7 1/2 ch. & a sugar 14 in diam. S. 63° 30' N. 27 1/2 ch. thence N. 87° 22 E. 26. 13 1/2 ch. to a stake with a dogwood 5 in diam. b. N. 23. 30 N. 6 1/2 ch. to an oak 6 in diam. S. 32° E. 11 1/2 ch. thence S. 0° 37' E. 31. 7 ch. to the place of beginning. Containing 176 7/16 acres. Lot No. 4. Beginning at b. running N. 0° 31' N. 43 ch. to the river thence up the river N. 38° E. 10. 21 1/2 ch. N. 67° E. 7. 36 ch. N. 77° E. 3. 75 ch. thence N. 106. 50 ch. to a stake with a sugar tree 6 in diam. b. N. 78° 30' N. 17 1/2 ch. to an oak 10 in diam. b. N. 2. 5. 30 N. 40 ch. thence N. 141° 33 ch. to a stake witness a mulberry 4 in diam. b. S. 31. 2 1/2 ch. to a stake with a dogwood 5 in diam. b. N. 35. 30 N. 3 1/2 ch. thence S. 25. 30 E. 24. 62 1/2 ch. to a stake with 2 hickories one 2 1/2 in diam. b. N. 52. 14. 16 1/2 ch. the other 22 in diam. N. 87° N. 23 1/2 ch. thence S. 82° 18' N. 51. 37 1/2 ch. to place of beginning. Containing 164 7/16 acres. November 1817.

Pages 310-312. Partition for Partition between the heirs of Mal Richardson and widows Dower, of their share in the above plat Partition not deemed advisable. And for Eliza the widow of Mal Richardson, was set off 75 7/16 acres more or less, being part of the above Lot No. 1 viz. Beginning on the S. bank of the break Miami at the cor. bet. Lots 37 & 4. thence with said parcel line of Lots 37 & 4. to the S. line of same thence S. 82° 18' N. 19 ch. 70 ch. to a B. oak 12 in diam. thence N. 25° 30' N. 26 ch. to a stake with a stake 18 in diam. b. N. 61° E. 38 ch. to a sugar tree 20 in diam. b. N. 43° N. 50 ch. thence N. 77° N. 12 ch. 50 ch. to an oak 20 in diam. thence N. 141° N. to an Elm 8 in diam. on the bank of the river thence up the river with the meander, thence to place of beginning December 1817.



The above is a plat of Lot No. 4. (part of foregoing plat) and Widows Dower has here been designated as Lot No. 5.

Cap 739 Comp 55