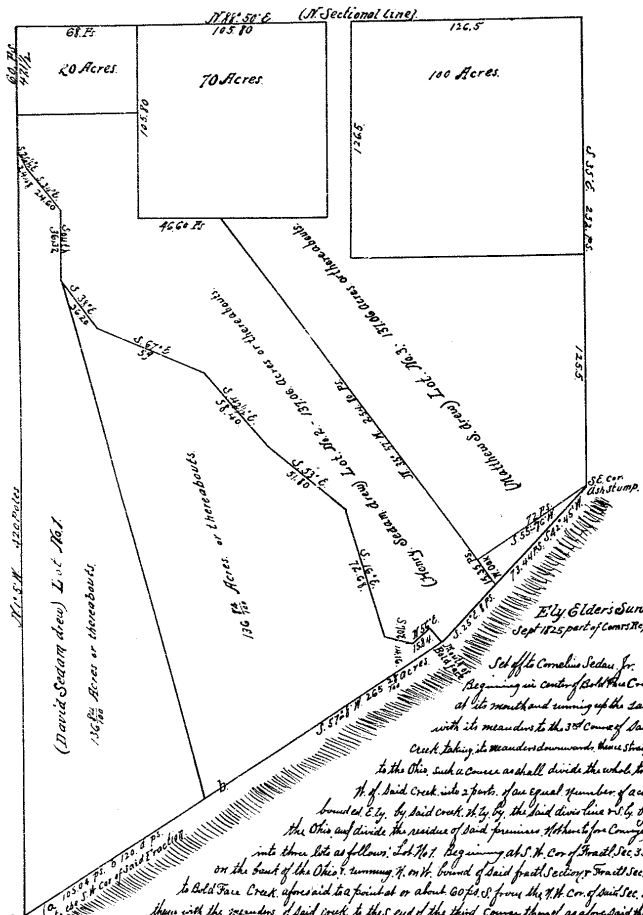
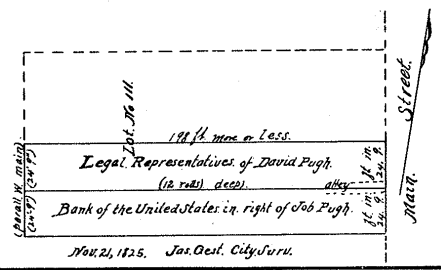


Pages 277-283. Partition of estate of Cornelius R. Sedaw, dec'd viz. In Several Sections Nos. 347-355. (See Vol. 38, p. 314-326).

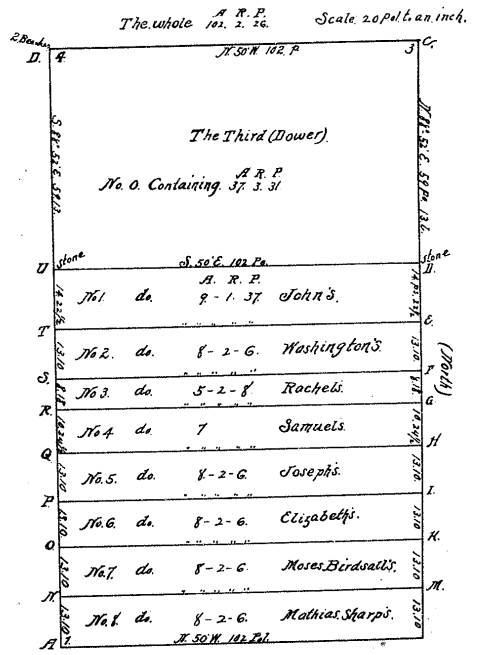


Set off to Cornelius Sedaw Jr. Beginning in center of Bald Face Cr. at its mouth and running up the same with its meanders to the 3rd corner of said Cr. taking its meanders downwards, thence straight to the Ohio and corner and shall divide the whole land of said Cr. into 2 parts of an equal number of acres bounded by said Cr. to the S. and distance 126.5' by the Ohio and divide the residue of said former 100 acres into three lots as follows: Lot No. 1 Beginning at N. Co. of Section 35 on the bank of the Ohio, running N. 10° W. toward of said front Section 35 to Bald Face Cr. across said Cr. to a point at or about 60 feet from the N.W. Co. of said Sec. 34 thence with the meanders of said Cr. to the end of the third corner thereof as aforesaid thence to the Ohio on the same line which as aforesaid shall divide the entire front of said Cr. into parts of an equal number of acres bounded by the said original Section E by the said division line and Bald Face Cr. to S. by the Ohio Lot No. 2 Beginning at such a point about 116 feet from the S.W. Co. of a 70 acre tract previously set off (See Record Book B. 2, page 413) as running through a white Oak tree bearing S. 55° 16' W. 75 feet from the S.E. Co. (at a stump) of said Sec. 34, will divide the whole tract set here to be conveyed by way E. of said Cr. into two equal parts having each an equal number of acres and including a strip of land lying betw. the said 70 acre tract and a 100 acre tract in the Co. of said Sec. 34 & c. as to lot No. 3. See Plat. D. and of the 20 acre tract. --- N. to 155' Mr. Elder will run straight from that N. Co. of said Cr. to a point as near as may be in a range with the top of the river bank on each side, thence run from the same point in the Cr. straight to the S.E. Co. and thence to the N.W. Sectional line according to the old field notes, without further survey and the other line having been already run by the Elder, as laid down in the Map. Calculate the quantity in each of the half sections of the 20, 70 or 100 acre tracts then divide them 2 great halves E. & W. of Bald Face each into 2 equal parts according to the order of the Commissioners.

Pages 286-288. Partition of estate of David Pugh, dec'd, the S. of original plan of Cincinnati. Commenced with J. Pugh (except 1/4 of an acre pond & a well on said 1/4 and the ground on which they stand). See Plat.



Pages 288-290. (Nov Term, 1817.) Partition of estate of Joseph Hawkins viz. One hundred & one A.C. in the original wild state in Survey No. 630 on the waters of the Little Miami.



Also the Description of Sec. entered on this Comm. is correct by John Mathew Francis. Comm. is correct by John M. Jas. Gregg, S.