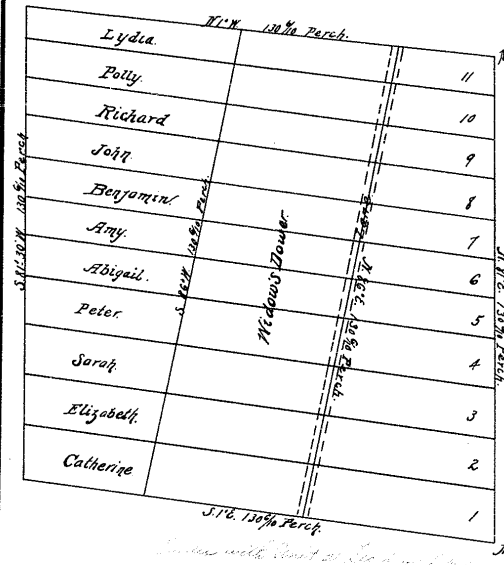


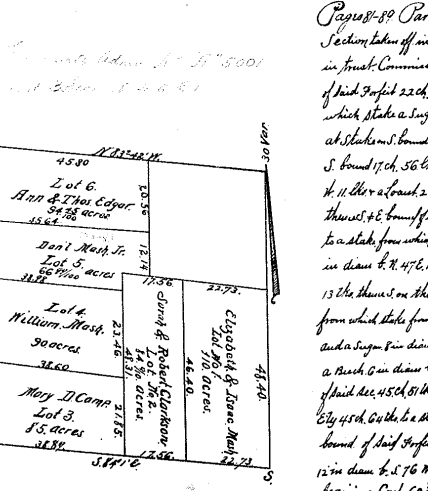
Pages 59-67 (Record not completed) Partition for Portion of the heirs of John S. H. Harris...
J. Stone (M.L. No. 1116 E. 31) corner for...
K. Stone (Hudsony 12, 7.10% E. 32) corner for...
L. Stone (Small Meadow 7.78 E. 13) corner...
M. Stone (Honeycomb 5.4% E. 37) cor of John H. Harris...
N. Stone (Sugar 12, S.S. E. 16) in Johnson's line of 17.78
O. Stone (Sugar 14, 7.34% E. 37) in Johnson's line of 17.78

Pages 102-105 Partition of the estate of Richard Brandon...
begins at the N.E. Cor of the Top of the hill...
S. 1' E. 90° 00' North 8 1/2' N. 130 1/2' W. 43 paces, thence N. 8 1/2' E. 130 1/2' paces, thence S. 1' E. 43 paces, then beginning at N. E. cor of the Top of the hill off the share of Catherine Elizabeth Sarah & Peter...
thence S. 8 1/2' E. 53 1/2' paces, thence N. 1' W. 130 1/2' paces, thence N. 8 1/2' E. 53 1/2' paces to place of beginning. Then beginning at N. E. cor of the 1/2



Lydia 11
Polly 11
Richard 10
Joseph 9
Benjamin 8
Amy 7
Adigail 6
Peter 5
Sarah 4
Elizabeth 3
Catherine 2

Pages 87-89 Partition of the estate of Daniel Marsh...
Section taken off in response at the N.E. corner...
in front of Commissioners Blah Report...
of said Section 22 ch. 73 to be a stake from which a Sugar 4 in diameter...
S. bound 15 ch. 56 the stake from which a Wood 17 in diameter...
N. 11' W. 2' 24 ch. 24 in diameter...
bound of said Section 25 ch. 73 the stake from which a Sugar 4 in diameter...
S. bound 15 ch. 56 the stake from which a Wood 17 in diameter...
N. 11' W. 2' 24 ch. 24 in diameter...



Pages 93-95 Partition of the estate of Daniel Marsh...
Section taken off in response at the N.E. corner...
in front of Commissioners Blah Report...
of said Section 22 ch. 73 to be a stake from which a Sugar 4 in diameter...
S. bound 15 ch. 56 the stake from which a Wood 17 in diameter...
N. 11' W. 2' 24 ch. 24 in diameter...
bound of said Section 25 ch. 73 the stake from which a Sugar 4 in diameter...
S. bound 15 ch. 56 the stake from which a Wood 17 in diameter...
N. 11' W. 2' 24 ch. 24 in diameter...