

SUBDIVISION

Plat A

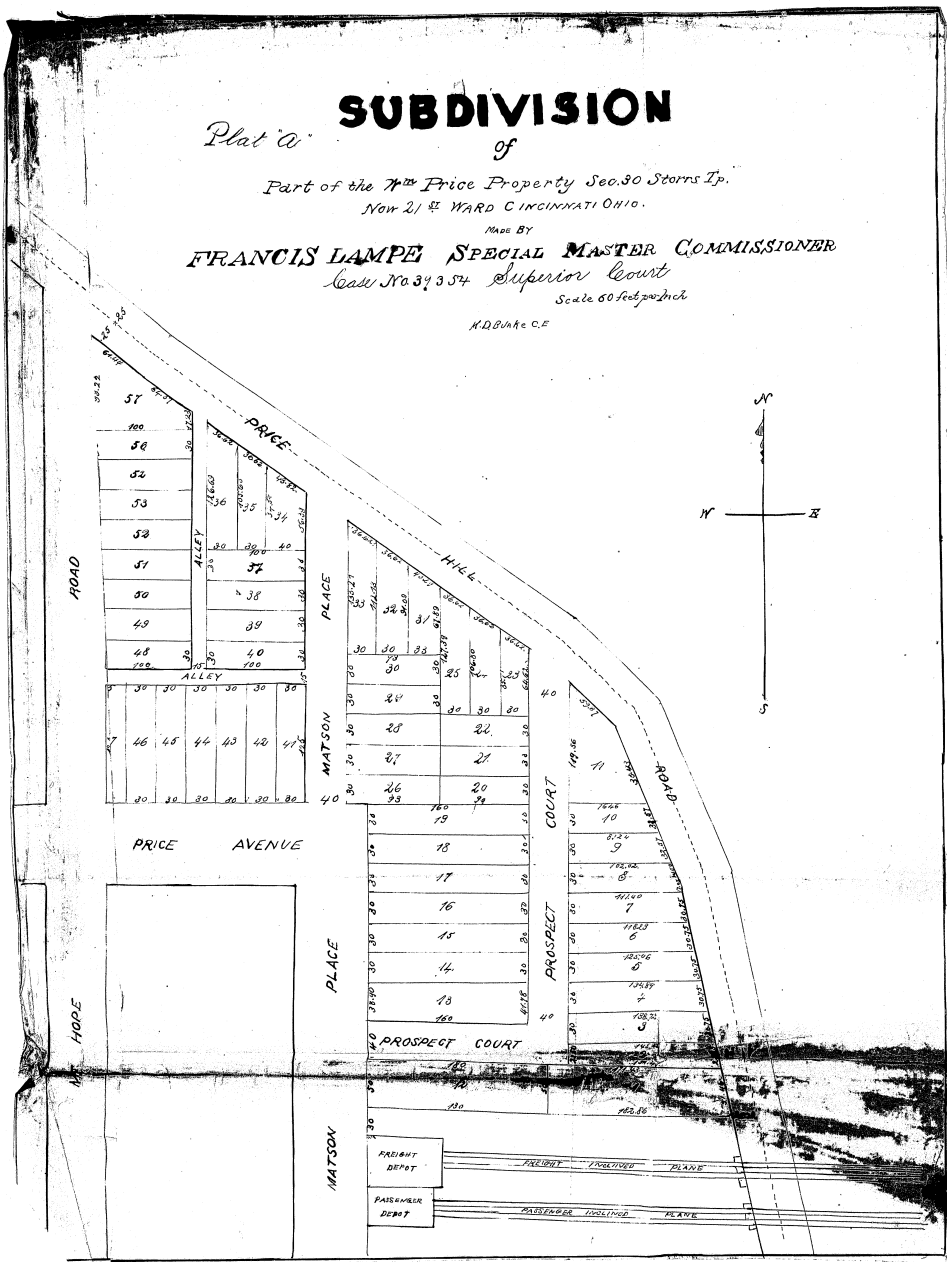
of

Part of the Wm Price Property Sec. 30 Storrs Tp.
Now 21st Ward CINCINNATI OHIO.

MADE BY
FRANCIS LAMPE SPECIAL MASTER COMMISSIONER
Case No 39354 Superior Court

Scale 60 feet per inch

M.D. Burke C.E.



SUBDIVISION

of

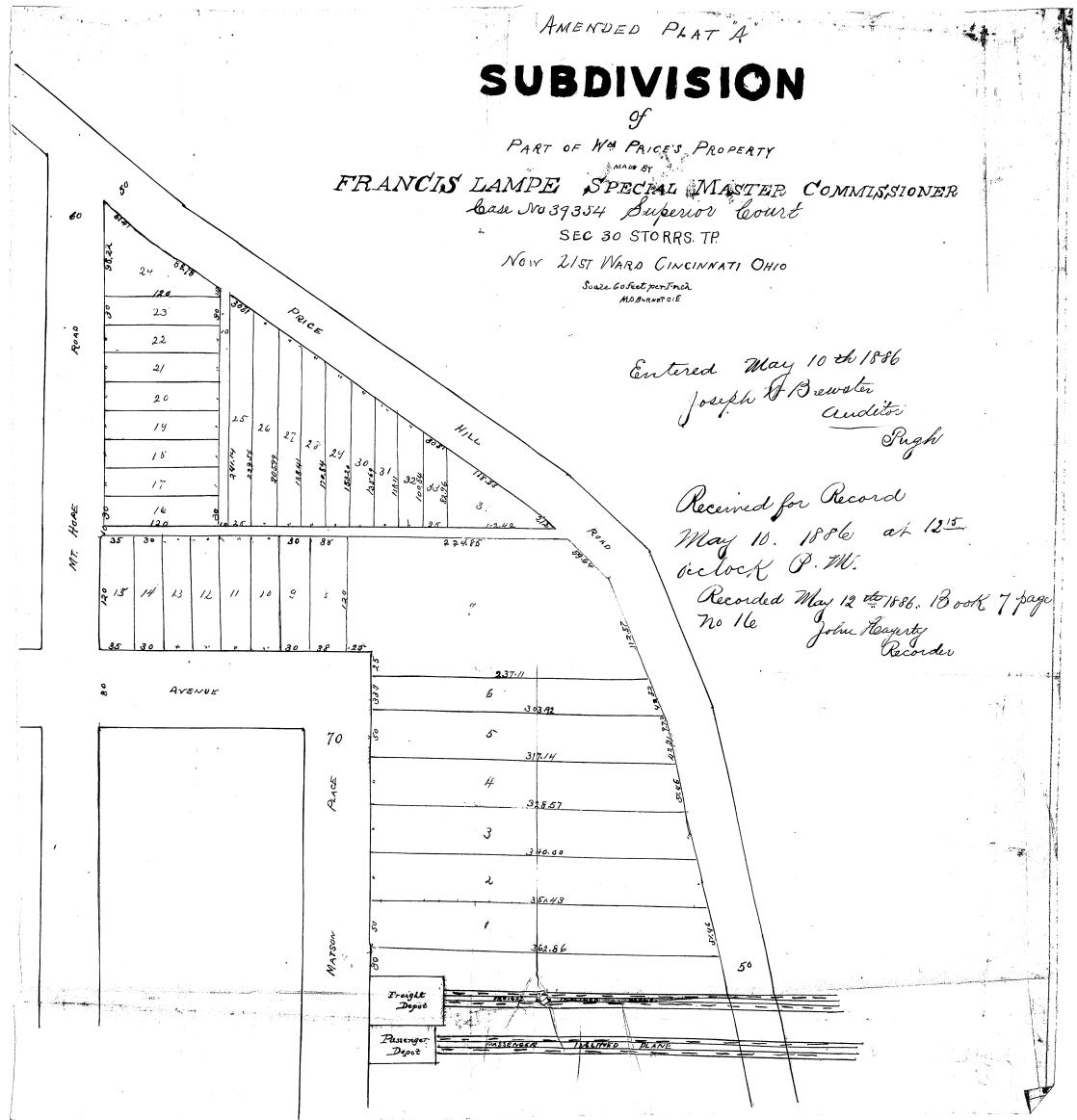
PART OF Wm PRICE'S PROPERTY

MADE BY
FRANCIS LAMPE SPECIAL MASTER COMMISSIONER
Case No 39354 Superior Court

SEC 30 STORRS TP

Now 21st Ward CINCINNATI OHIO

Scale 60 feet per inch
M.D. Burke C.E.



Entered May 10th 1886
Joseph H. Brewster
Auditor
Pugh

Received for Record
May 10. 1886 at 12¹⁵
o'clock P.M.

Recorded May 12th 1886. Book 7 page
No 16
John H. Stewart
Recorder

588-7.

CASE NO. 38854
THE PLAT ATTACHED TO PAGE NO. 74 IN (4)
RECORD BOOK 19 IS MICROFILMED ON
SPECIAL 35MM REEL FOR PLATS. 4 drawings

Louella Stuch
Microfilm Operator