

4123

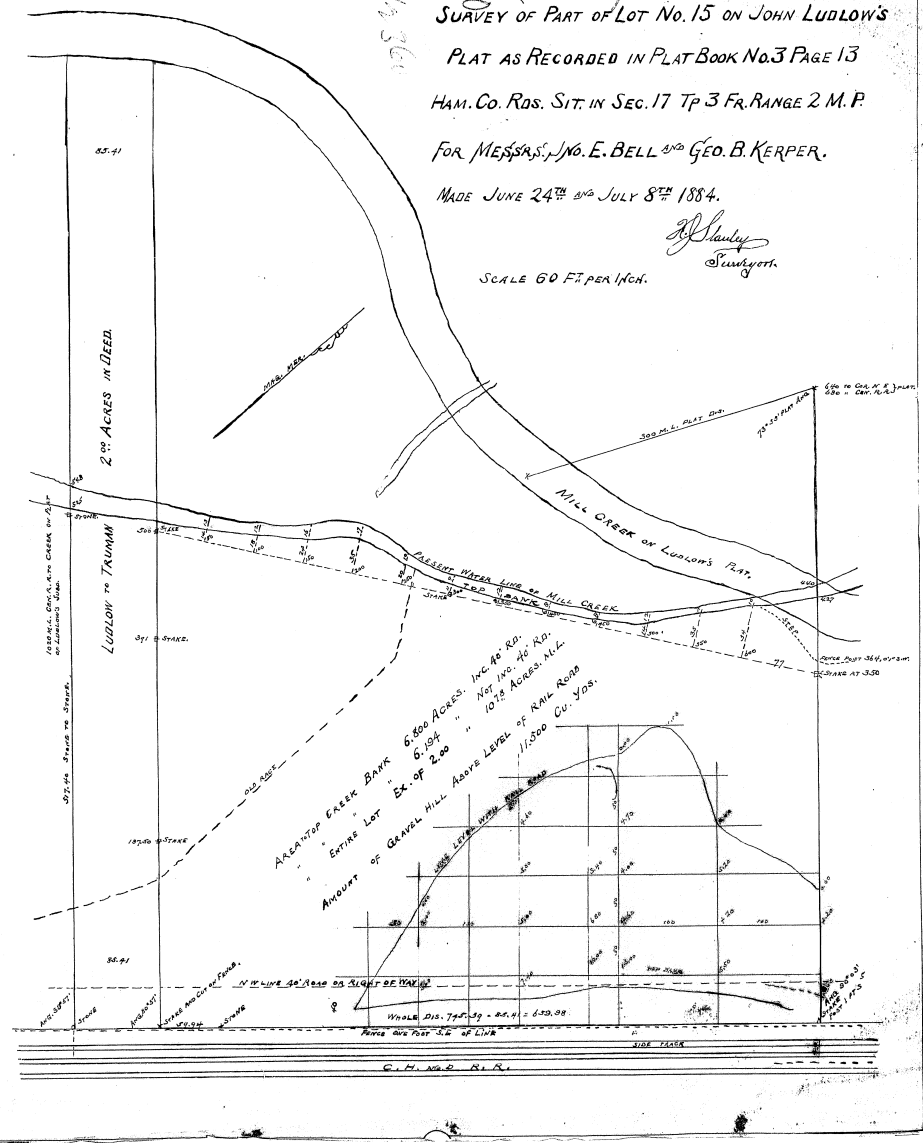
Exhibit "C"

42360

SURVEY OF PART OF LOT No. 15 ON JOHN LUDLOW'S
 PLAT AS RECORDED IN PLAT BOOK No. 3 PAGE 13
 HAM. CO. RDS. SIT. IN SEC. 17 TP 3 FR. RANGE 2 M. P.
 FOR MESSRS. J. E. BELL AND GEO. B. KERPER.
 MADE JUNE 24TH AND JULY 8TH 1884.

J. Stanley
 Surveyor.

SCALE 60 FT. PER INCH.



SRB-7.

CASE NO. 42360
 THE PLAT ATTACHED TO PAGE NO. 420
 RECORD BOOK 17 IS MICROFILMED ON
 SPECIAL 35MM REEL FOR PLATS.

Lucile Stubb
 Microfilm Operator