

LEWIS DRAKE EST. REST'D PLAT PG 96

Lot 4

Amelia Seymour

$\Delta = 29^{\circ} 51'$
 $R = 205'$

$\Delta = 24^{\circ} 44'$
 $R = 205'$

Lot 64

Amelia Seymour

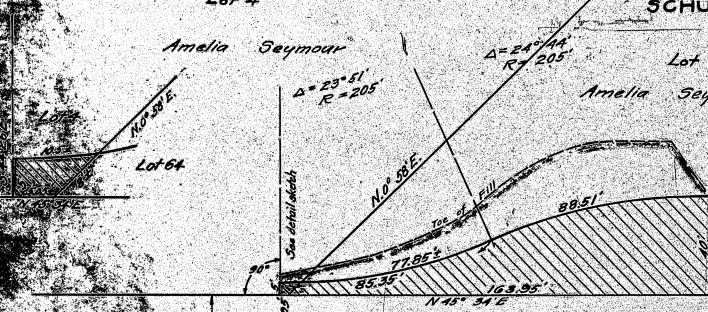
SCHUSTER AND WILSON SUB.

O. P. B. 3- P. 108

Pt 35

John G. Becht

MARKBREIT
AVE.



MADISON

ROAD



Edward H. Hurdcastle

Edward W. Smith et al.

Part of Lot 7

$\Delta = 23^{\circ} 01'$
 $R = 220'$

$\Delta = 22^{\circ} 08'$
 $R = 220'$

LEWIS DRAKE EST. REST'D PLAT PG. 96

CITY OF CINCINNATI
ENGINEERING DEPARTMENT
DIVISION OF HIGHWAYS
APPROPRIATION PLAT FOR WIDENING
MADISON ROAD
300 FT. SOUTH OF ISABELLA AVE.
SCALE 30' = 1" AUG. 1917
CORRECTED *W. H. Whipple* PEIN, ASST. ENG.
APPROVED *[Signature]* CHIEF ENGINEER
ACCESSION NO. 8820

ISABELLA

REVISOR