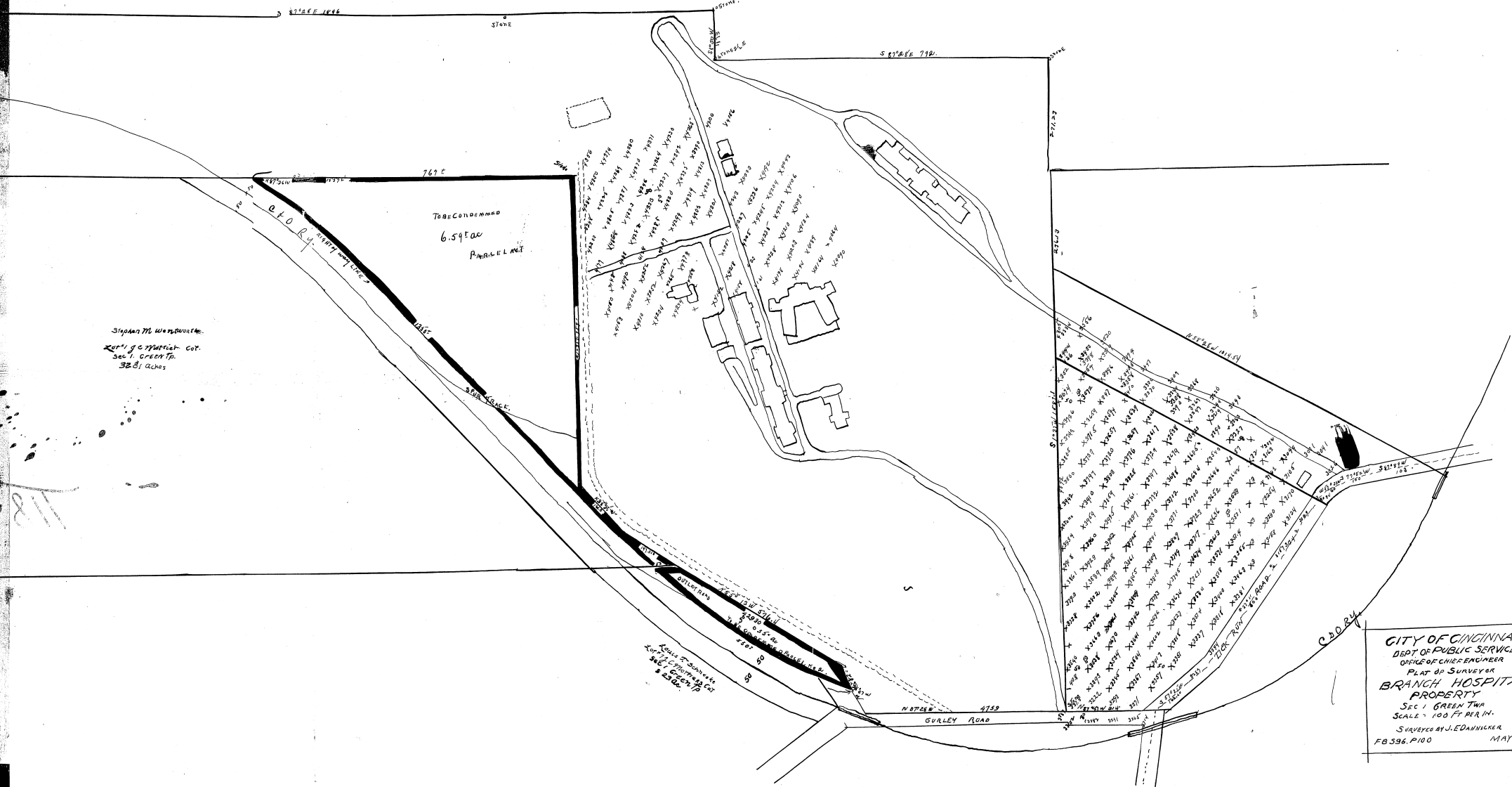


Stipan M. Wernke  
 Corp. of C. Murphy Co.  
 Sec. 1, Green Tr.  
 328 1/2 acres



CITY OF CINCINNATI  
 DEPT. OF PUBLIC SERVICE  
 OFFICE OF CHIEF ENGINEER  
 PLAT OF SURVEYOR  
 BRANCH HOSPITAL  
 PROPERTY  
 SEC. 1, GREEN TR.  
 SCALE - 100 FT PER IN.  
 SURVEYED BY J. EDANNICKER  
 FB 536. P. 100 MAY 1916

688-191

CASE NO. 153811  
 THE PLAT ATTACHED TO PAGE NO. 225  
 RECORD BOOK 466 IS MICROFILMED ON  
 SPECIAL 35MM REEL FOR PLATS.

*Lucas Reed*  
 Microfilm Operator