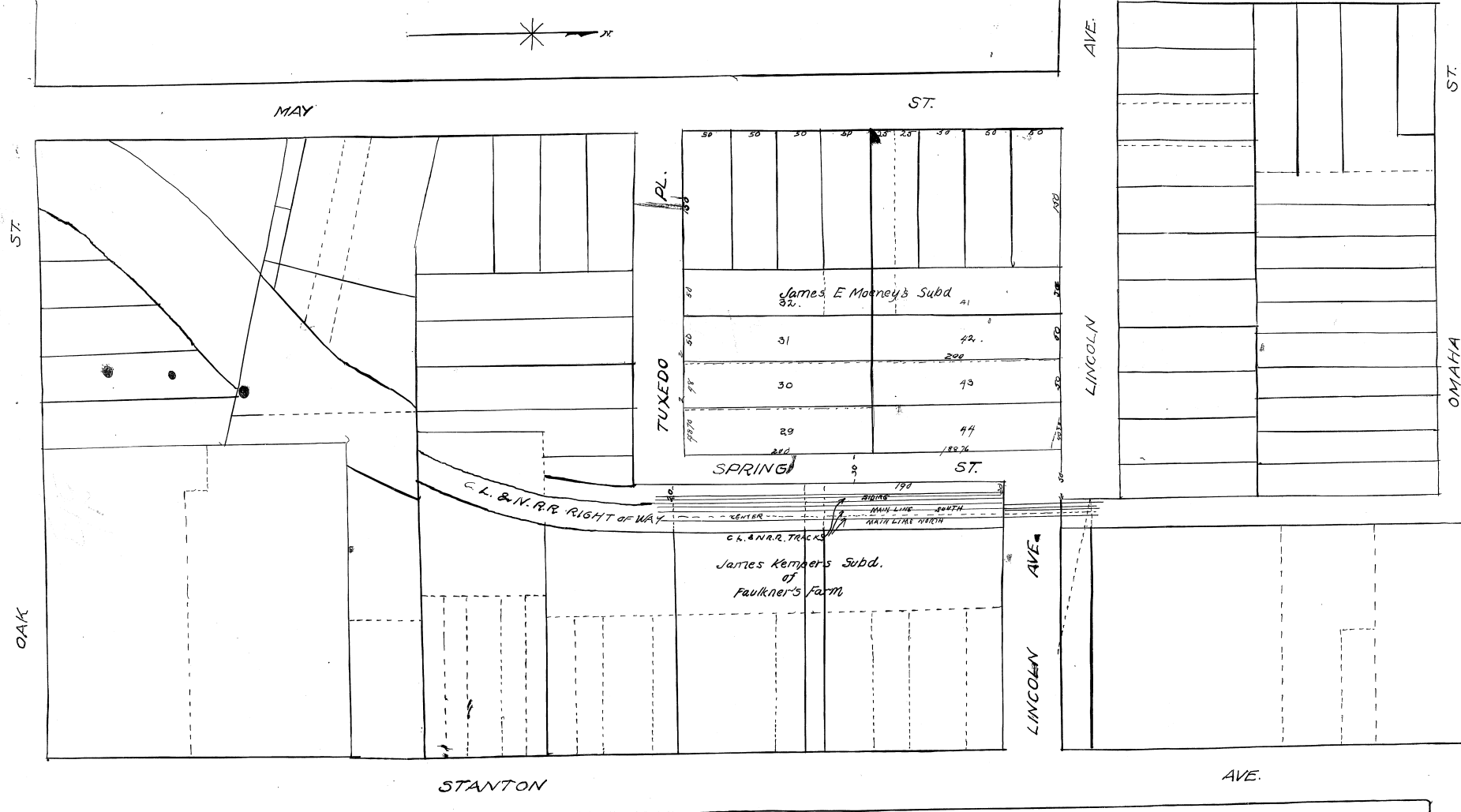
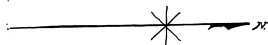


PLAT SHOWING  
 LOCATION OF SPRING ST. AND C.L. & N.R.R. TRACKS  
 BETWEEN LINCOLN AV AND TUXEDO PL.  
 WALNUT HILLS

Scale: 1"=50' Jan. 27, 1912.



J.A. Stewart, Civil Engineer  
 112 Traction Bldg.  
 Cincinnati, O.

C.C.B. 187.

CASE NO. 7  
 THE PLAT ATTACHED TO PAGE NO. 125  
 RECORD BOOK 457 IS MICROFILMED ON  
 SPECIAL 35MM REEL FOR PLATS.

*River Shannon*  
 Microfilm Operator