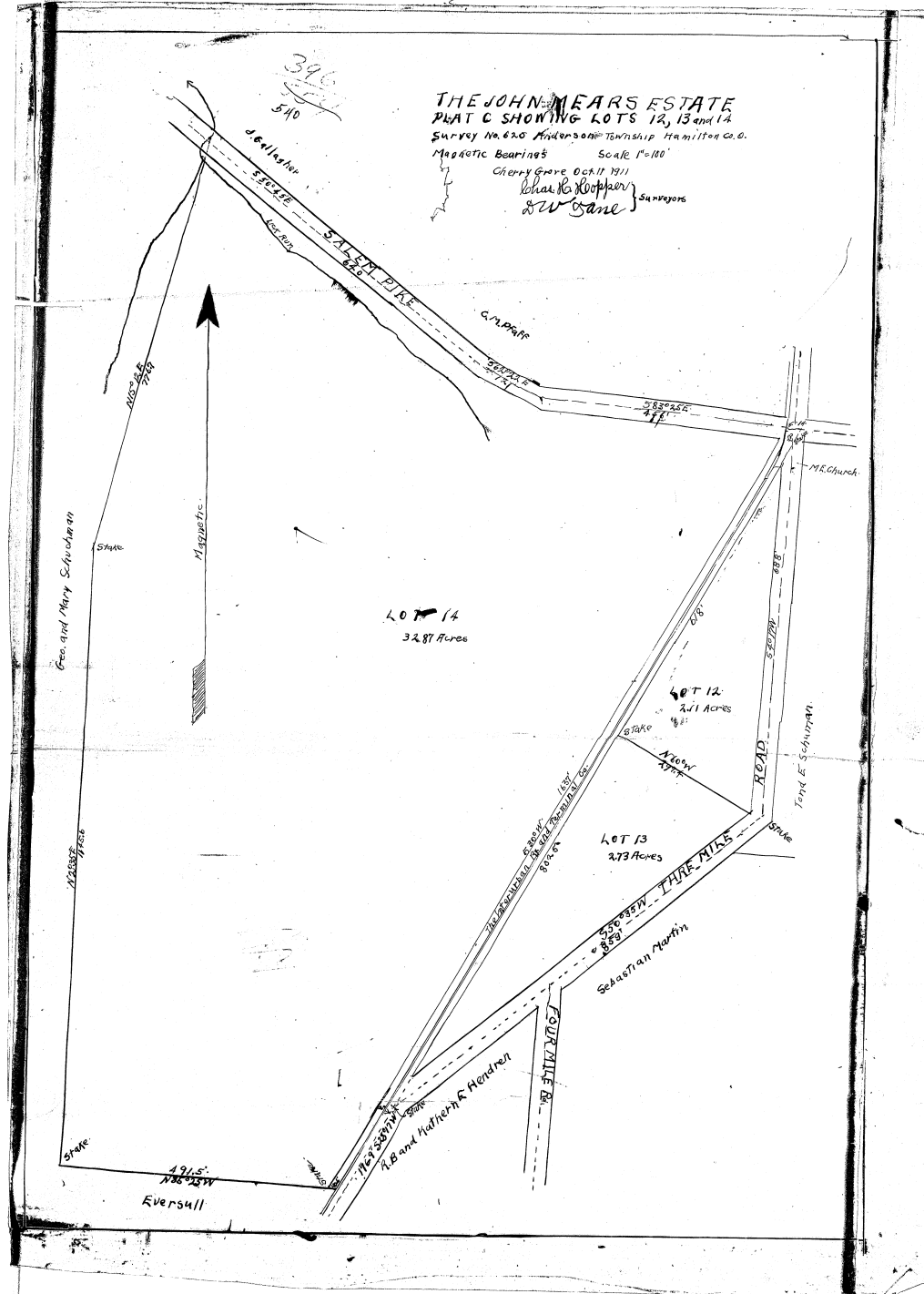


396
540

THE JOHN MEARS ESTATE
 PLAT C SHOWING LOTS 12, 13 and 14
 Survey No. 620 Anderson Township Hamilton Co. O.
 Magnetic Bearings Scale 1"=100'
 Cherry Grove Oct. 17 1911
 Charles K. Koppfer } Surveyors
 & W. Kane }



CCB-163

CASE NO. 8
 THE PLAT ATTACHED TO PAGE NO. 540
 RECORD BOOK 386 IS MICROFILMED ON
 SPECIAL 35MM REEL FOR PLATS.

Walter Swanson
 Microfilm Operator