

PLAT of SURVEY

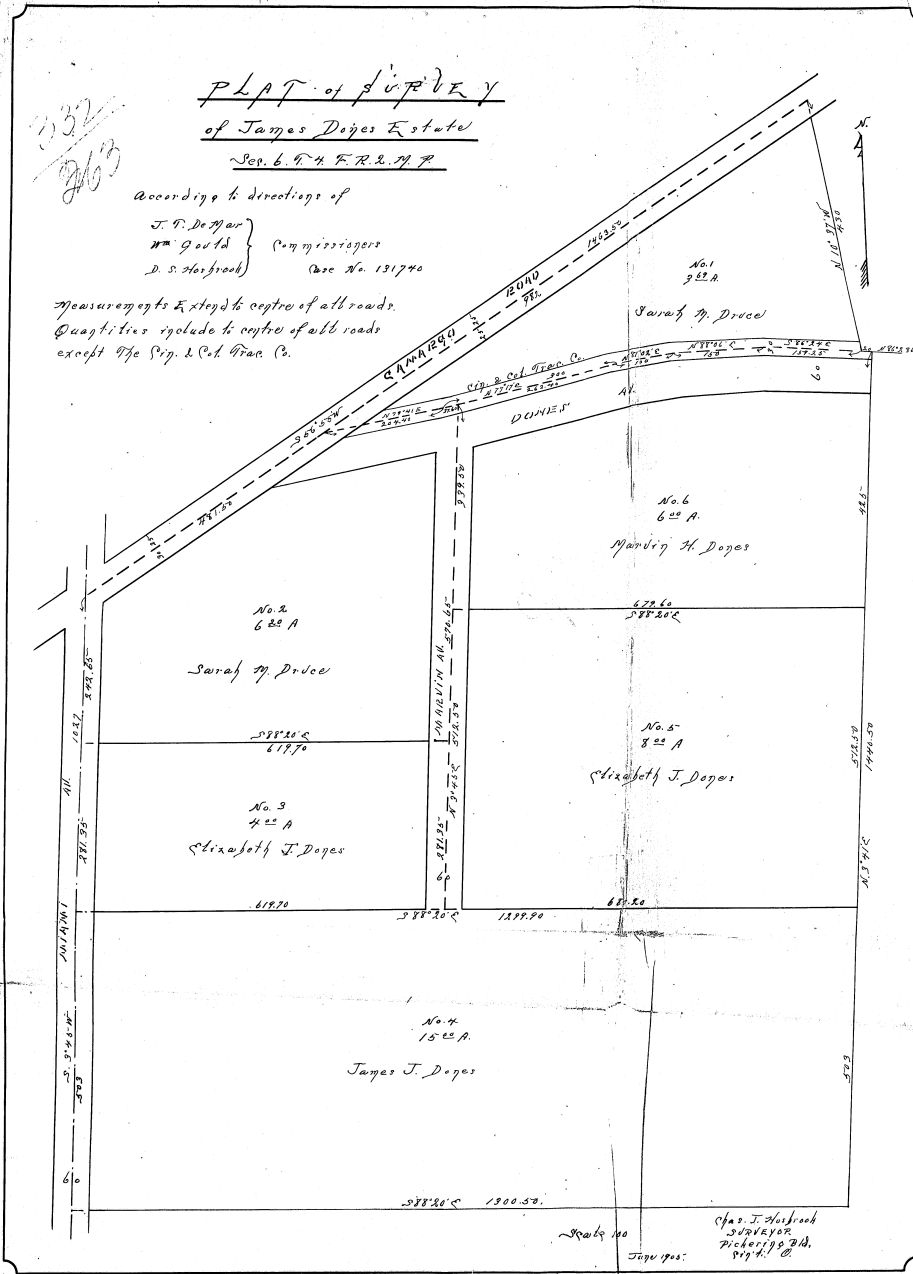
of James Dopes Estate

Sec. 6, T. 4, R. 2, N. 7

According to directions of

J. P. DeMay }
 W. Gould } Com. Missions }
 D. S. Harbrook } Case No. 131740

Measurements Extended to centre of all roads.
 Quantities include to centre of all roads
 except the Sig. & Col. Trac. Co.



CEC-137.

CASE NO. 131740
 THE PLAT ATTACHED TO PAGE NO. 263 IN
 RECORD BOOK 532 IS MICROFILMED ON
 SPECIAL 35MM REEL FOR PLATS.

Linda Stuck
 Microfilm Operator