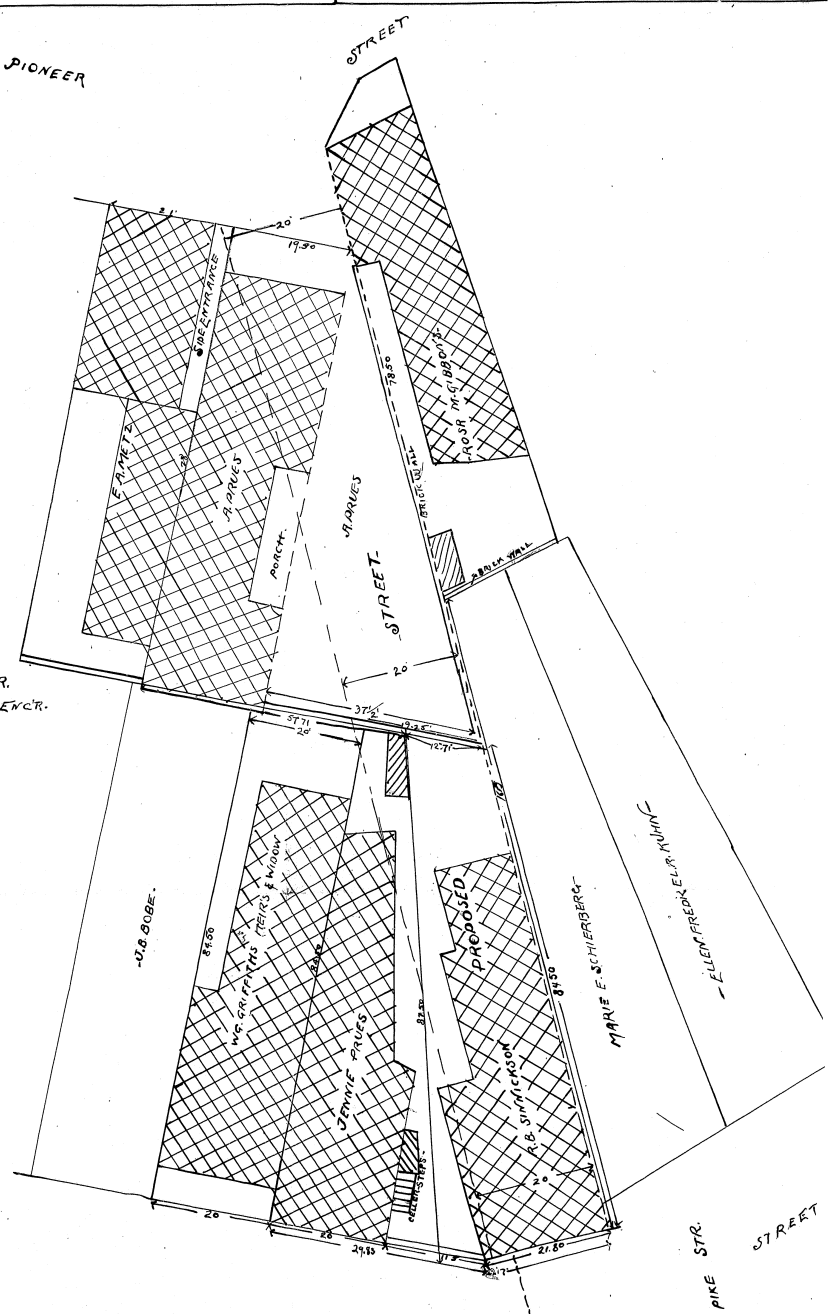


7/27/04
 PLAN
 PROPOSED STREET
 FROM
 PIONEER STR. TO FIFTH STR.
 SCALE 10 FT = 1 IN. J.L. CONWAY ASST ENGR.

[Cross-hatched box] REPRESENTS BRICK.
 [Diagonal-hatched box] " FRAME.



CB-131

CASE NO. 129172
 THE PLAT ATTACHED TO PAGE NO. 500 IN
 RECORD BOOK 318 IS MICROFILMED ON
 SPECIAL 35MM REEL FOR PLATS.

Lucile Storch
 Microfilm Operator