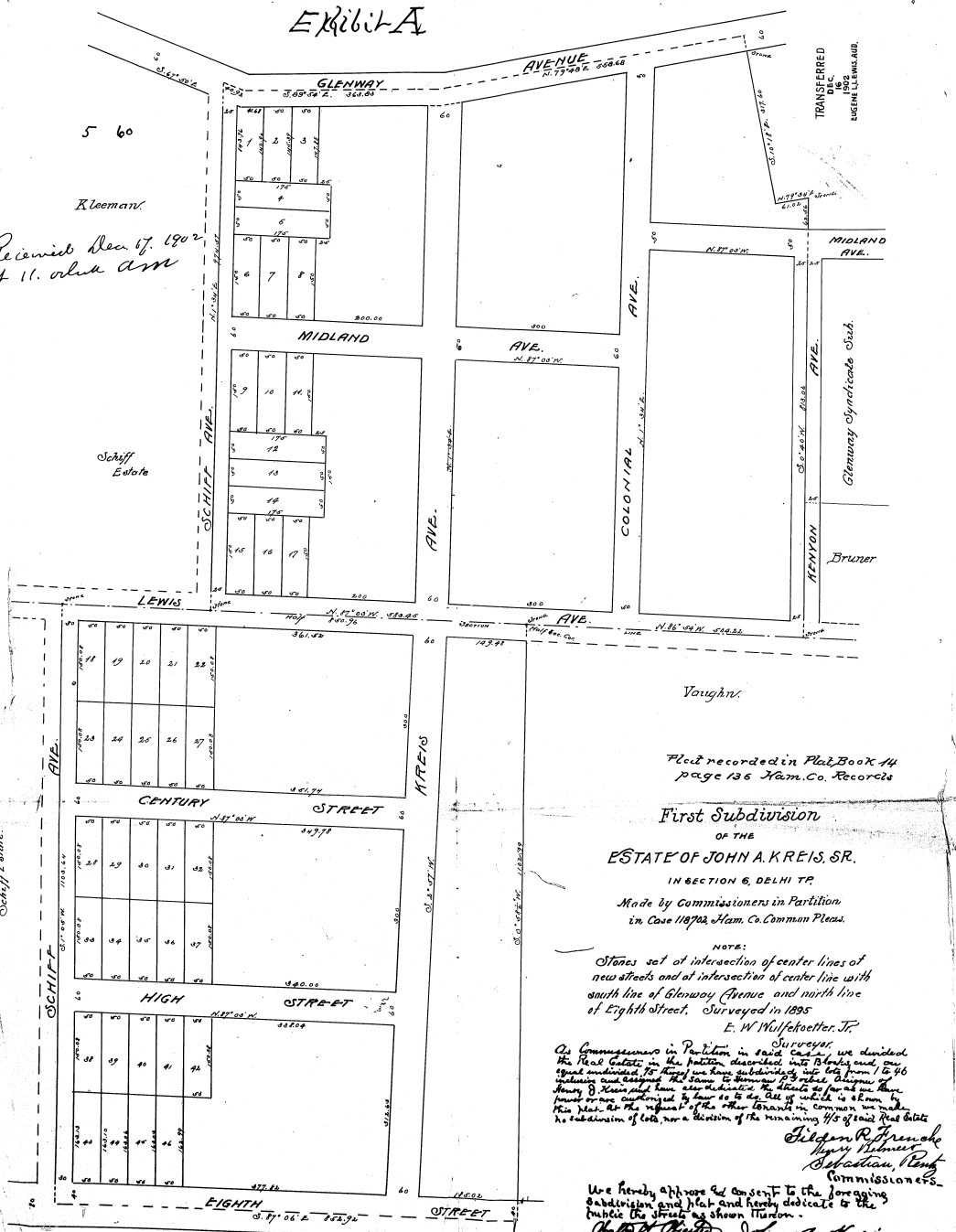


EXHIBIT A

5 60
Kleeman
Received Dec 17, 1902
at 11. o'clock AM



Filed recorded in Plat Book 44
page 136 Ham. Co. Records

First Subdivision
OF THE
ESTATE OF JOHN A. KREIS, SR.
IN SECTION 6, DELHI TP.
Made by Commissioners in Partition
in Case 118762 Ham. Co. Common Pleas.

NOTE:
Stones set at intersection of center lines of
new streets and at intersection of center line with
south line of Glenway Avenue and north line
of Eighth Street. Surveyed in 1895
E. W. Muffelbauer, Jr.
Surveyor.

As Commissioners in Partition in said case, we divided
the Real Estate in the partition described into Blocks and one
equal undivided lot from the same subdividing into lots from 1 to 46
including and except the same to Henry J. Kreis, Assignee of
Henry J. Kreis, and also including the streets as shown on the
plan and authorized by law so to do. All of which is shown by
this plat as the request of the other tenants in common we make
the subdivision of lots, and a division of the remaining 1/3 of said Real Estate
to the subdivision of lots, and a division of the remaining 1/3 of said Real Estate

Edison Patterson
Henry Palmer
Robertau, Clerk
Commissioners.

We hereby approve and consent to the foregoing
subdivision of plat and hereby dedicate to the
public the streets as shown thereon.
John A. Kreis
Henry J. Kreis
George C. N. Kreis
Herman Kreis
Assignee of Henry J. Kreis
Barbara Kreis
Henry J. Kreis

820-127

CASE NO. ?
THE PLAT ATTACHED TO PAGE NO. 521 IN
RECORD BOOK 307 IS MICROFILMED ON
SPECIAL 35MM REEL FOR PLATS.

Lucas Steel
Microfilm Operator