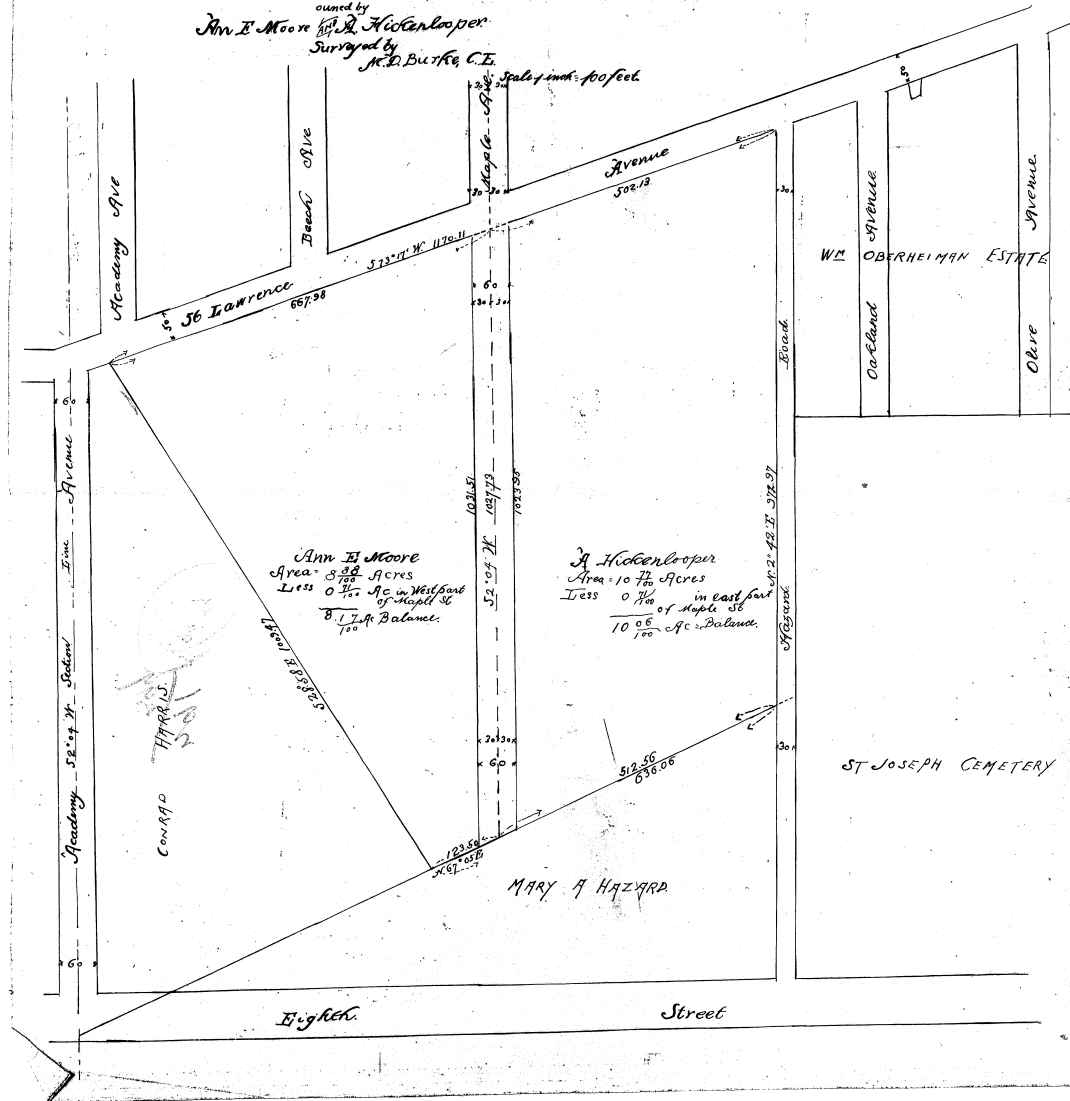


Plat of a tract of land
in
Sec. 06, T. 7, R. 1 M. E.
owned by
Ann E. Moore & J. H. Hickenlooper
Surveyed by
J. R. Burke, C.E.



CRB-120

CASE NO. 99529
THE PLAT ATTACHED TO PAGE NO. 399 IN
RECORD BOOK 291 IS MICROFILMED ON
SPECIAL 35MM REEL FOR PLATS.

Luella Steck
Microfilm Operator