

Subdivision of  
 The Erkenbrecher & Fisher Tract  
 Section 32 T. 4. R. 2. S. 1. N.P.  
 East Walnut Hills  
 Made by (Geo. F. MEYERS, Commissioners  
 vs. Y. ZEBEROLE & CLERKWAY) ex partition  
 In Case No. 10791 Ham Co.  
 Com. Pleas Court

Recorded in Plat Book 14  
 page 8 R.O. Ham. Co. O.

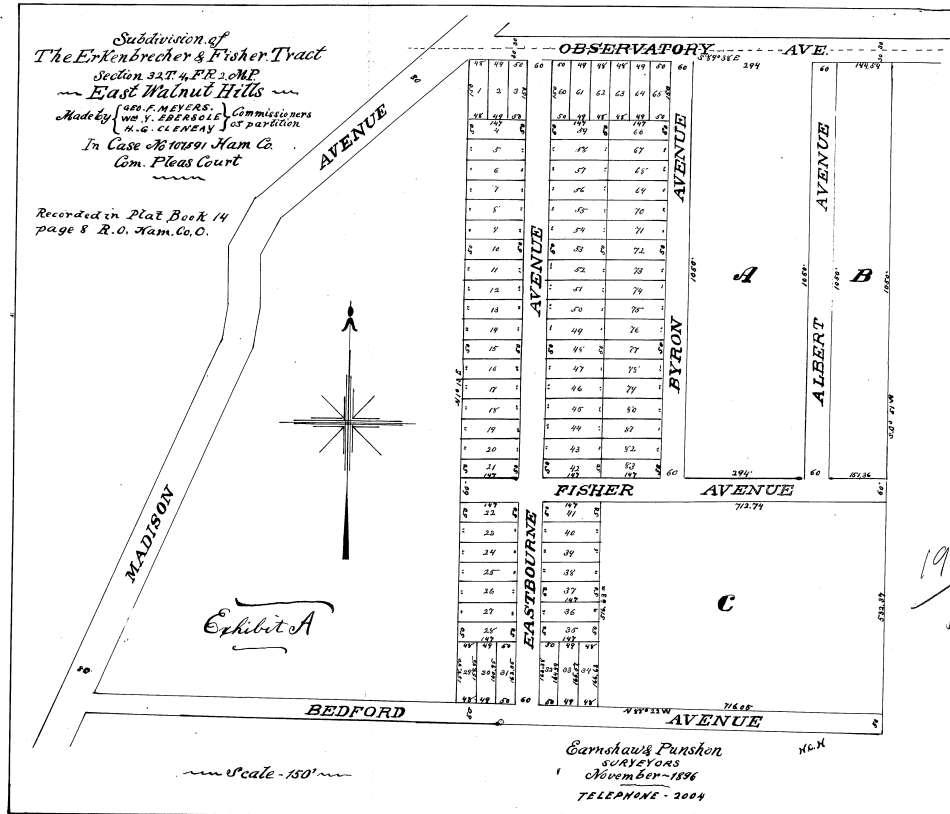


Exhibit A

Scale - 150'

Earnshaw & Panshon  
 SURVEYORS  
 November - 1896  
 TELEPHONE - 2004

196  
 /  
 12

228-82

CASE NO. 107591  
 THE PLAT ATTACHED TO PAGE NO. 12 IN  
 RECORD BOOK 146 IS MICROFILMED ON  
 SPECIAL 35MM REEL FOR PLATS.

Alvan G. Guman  
 Microfilm Operator