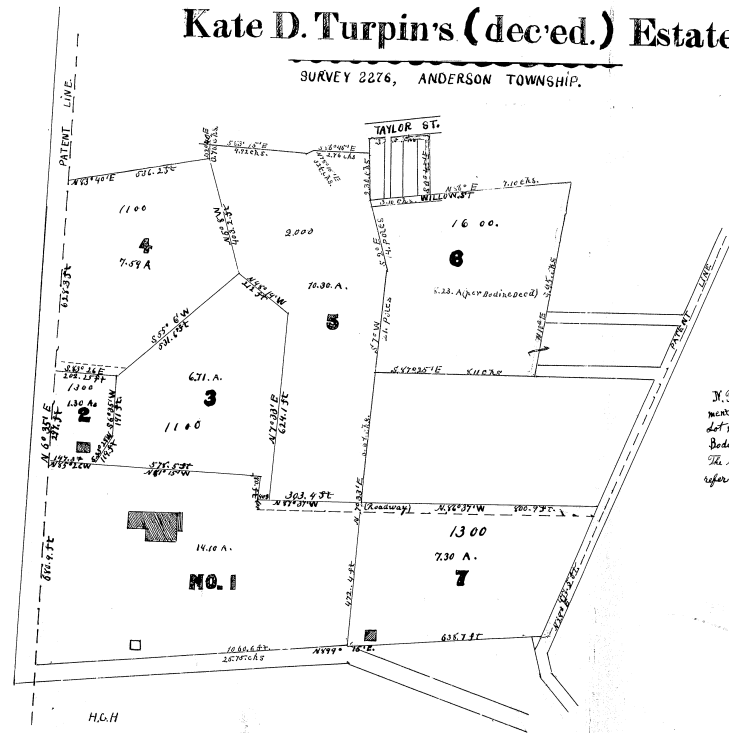


Plat No. 1
PARTITION
of
HOMESTEAD PORTION
of
Kate D. Turpin's (deced.) Estate.

SURVEY 2276, ANDERSON TOWNSHIP.



N.B. - The quantities represented on this plat are computed partly from measurements made by me on the ground, partly from plat of the Big Horn Homestead lot made in 1882 by D. S. Shook, S. B. and partly from a Deed of Hiram Bodine and wife to E. J. Turpin, January 27th 1869.
The lines and figures in black designate the measurements, those in red refer to the Homestead plat and Bodine deed.

B. D. Bennett
Surveyor and Civil Engineer
May 1876

ORB-76

CASE NO. 107207
THE PLAT ATTACHED TO PAGE NO. 573 IN
RECORD BOOK 180 IS MICROFILMED ON
SPECIAL 35MM REEL FOR PLATS.

Lulla Smith
Microfilm Operator