

Plat of Redivision
of
Parvin Lane and Bolles Subdivision - Normod.
EXCEPTING LOTS 6, 12 and Part of 11.
MADE BY

Albert M. Callough, } Commissioners in Partition
W. S. Rowe }
Edward Mills. }
George S. Parvin } Case 88028
P.P. Lane et al. } Ham. Co. Com. P. Eas. Court.

Scale 1 inch = 100 feet.

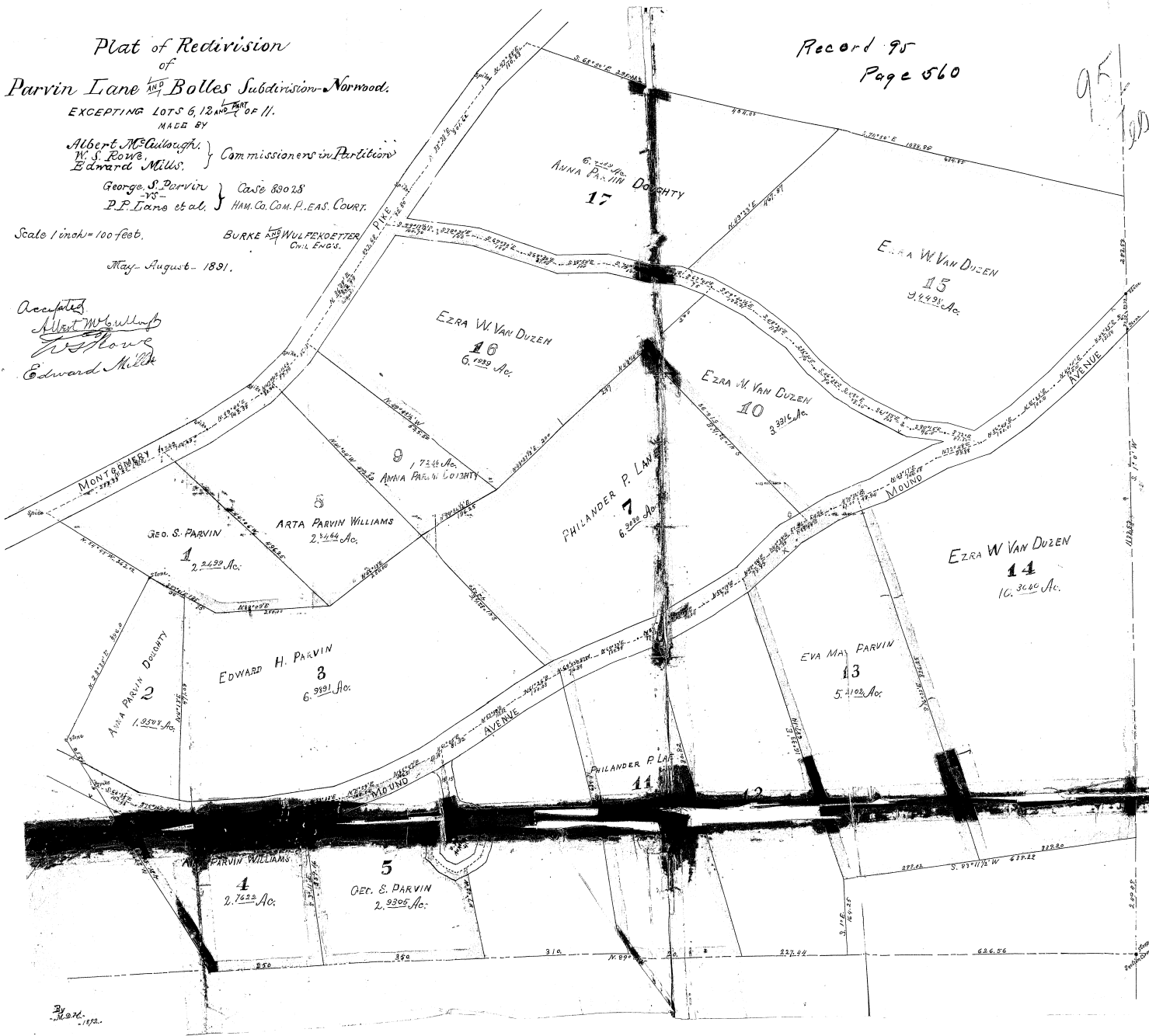
BURKE & WULFERTIER
CIVIL ENGRS.

May-August, 1891.

Accepted
W. S. Rowe
Edward Mills

Record 95
Page 560

95
560



Blod. 1892.

000-41

CASE NO. ?
THE PLAT ATTACHED TO PAGE NO. 560 IN
RECORD BOOK 95 IS MICROFILMED ON
SPECIAL 35MM REEL FOR PLATS.

Viola J. J. J.
Microfilm Operator