

**SUBDIVISION**  
MADE BY  
**WM OBERHELMAN**

IN 882 T.P. & C.M.P.  
Cincinnati Ohio

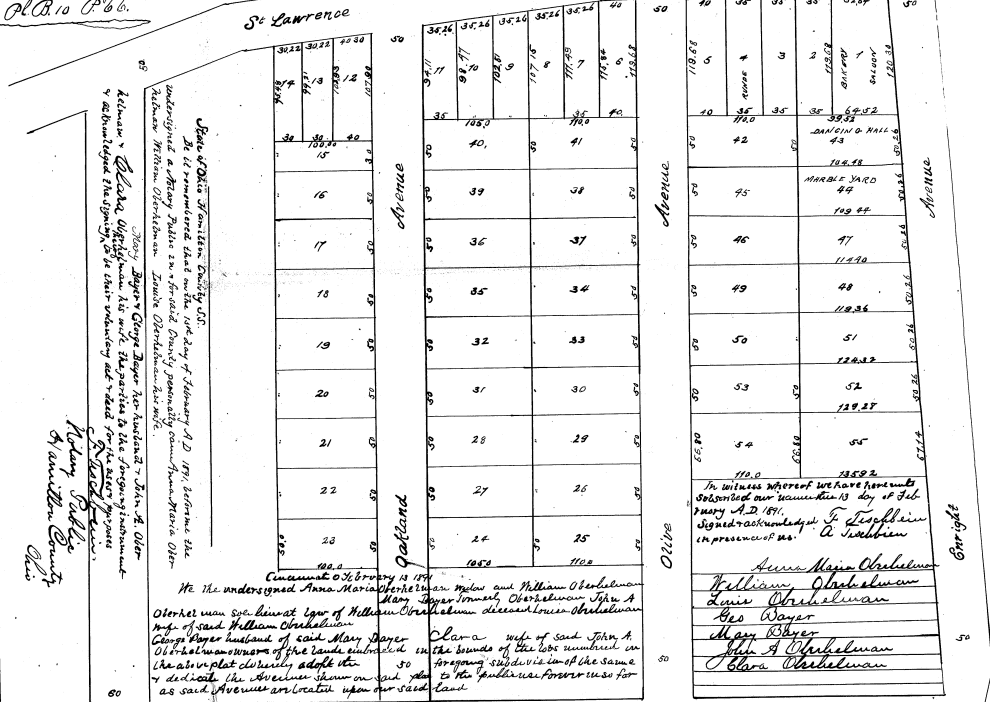
*Ordered May 12 1891  
John Hagerty Auditor  
Per Jas B. Toland Deputy*

**Exhibit A**

*Filed for Record May 12 1891  
George Nelson Register  
Per Jas B. Toland Deputy*

*Recorded May 18 1891  
P.C. 10 P. 66.*

**Record Book 89  
Page 245**



*Know all men that I, John A. Oberhelman, do hereby certify that the foregoing subdivision map of the premises in the above plat duly prepared and recorded in the office of the Recorder of Deeds for the City of Cincinnati, Ohio, is a true and correct copy of the original map as the same appears on file in the office of the Recorder of Deeds for the City of Cincinnati, Ohio.*

*In witness whereof we have hereunto subscribed our hands this 12th day of May 1891.*  
*Witness my hand and seal this 12th day of May 1891.*

**Wm Oberhelman**  
**John A. Oberhelman**  
**Clara Oberhelman**

*Geo Barnhart  
Surveyor  
January 90*

C28-38.

CASE NO. 7  
THE PLAT ATTACHED TO PAGE NO. 245 IN  
RECORD BOOK 89 IS MICROFILMED ON  
SPECIAL 35MM REEL FOR PLATS.

*Lucea High*  
Microfilm Operator