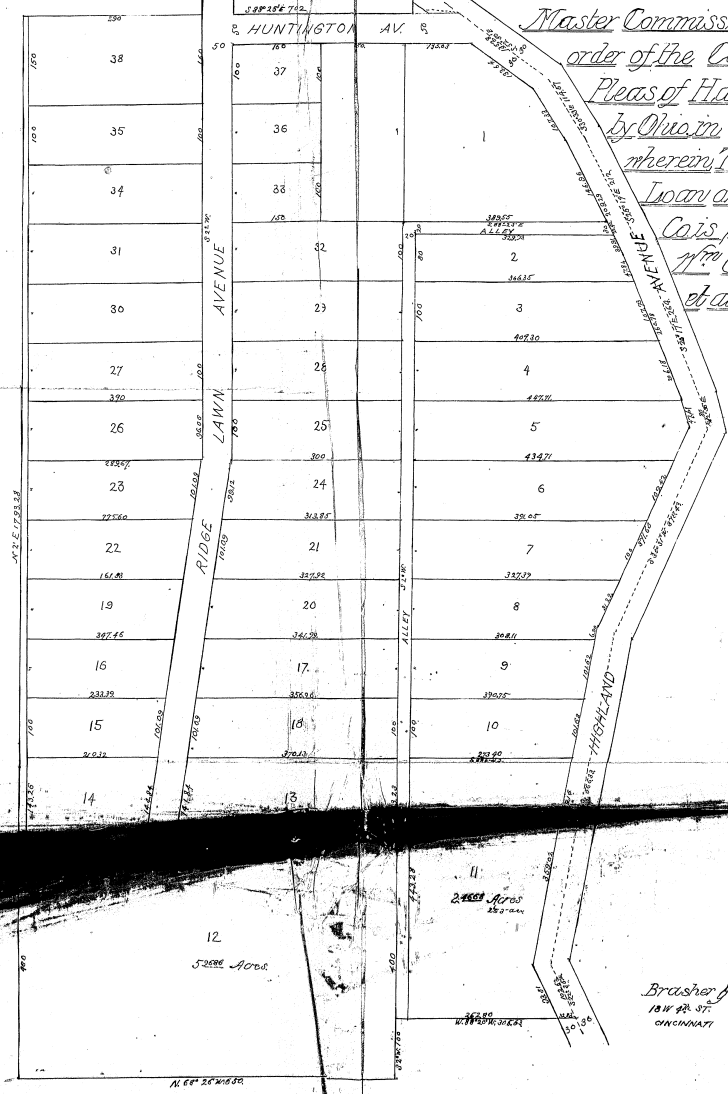


Subdivision
 OF PART OF THE TRACT OF
 W. C. HUNTINGTON'S
 AT
 COLLEGE HILL

Made by *Chris Weber* Special
 Master Commissioner, as per
 order of the Court of Com-
 Pleas of Hamilton County
 by *Quinn* case N^o 1501
 wherein *The Fischmann*
Locan and Building
Co's plaintiff and
W. C. Huntington
et al are defendants



Record Book 30
 Page 446

12
 5000 Acres

24688 Acres
 25000000

Brusher & Miffoetter
 18 W. 2^d ST.
 CINCINNATI
 SURVEYORS
 June 1886

CRB-13.

CASE NO. ?
 THE PLAT ATTACHED TO PAGE NO. 446 IN
 RECORD BOOK 30 IS MICROFILMED ON
 SPECIAL 35MM REEL FOR PLATS.

Quinn
 Microfilm Operator