

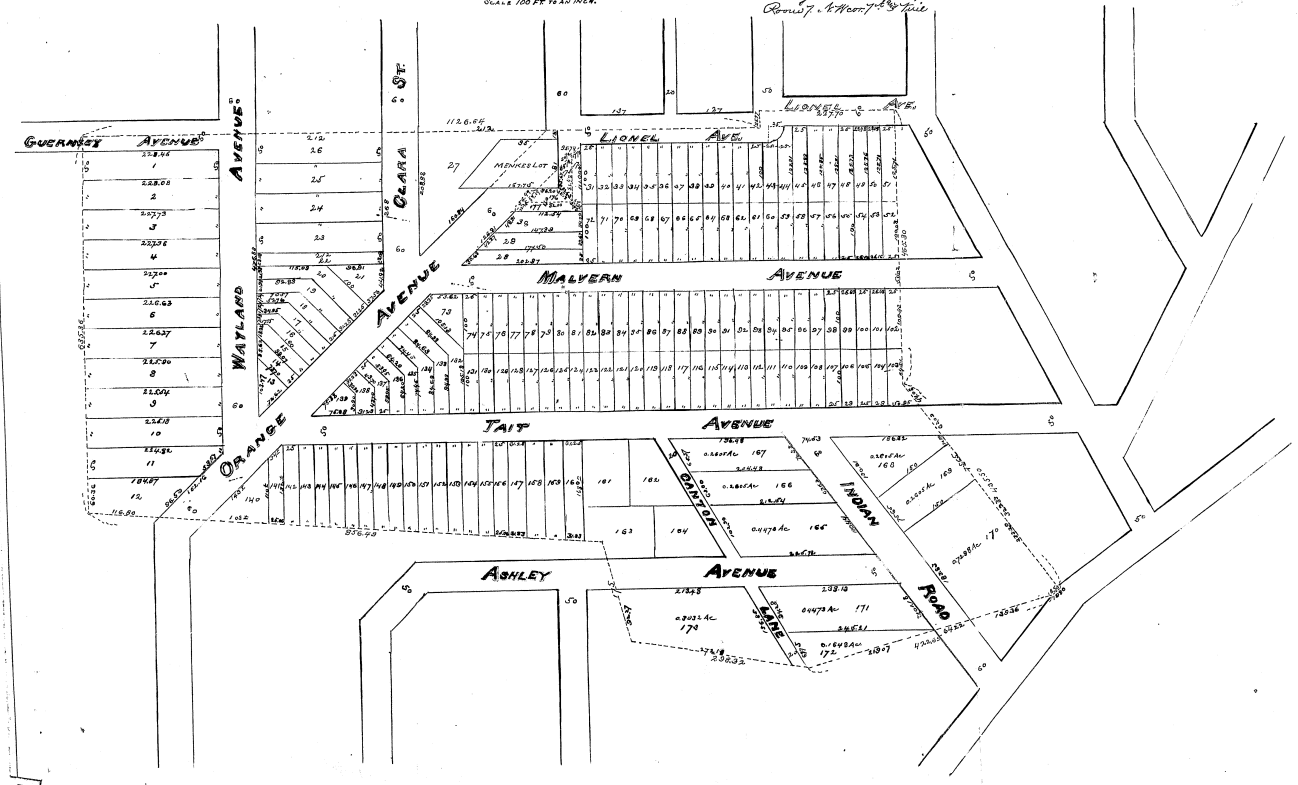
*Record Book 22  
Page 340*

COMMISSIONERS  
SUBDIVISION  
OF PART OF THE ESTATE OF  
**W<sup>M</sup> ORANGE**

*W. McHARRISON,  
Sec. D.S. M. C.*

*L. M. Matthews, Jr.  
Civil Engineer & Surveyor  
Comm. 7, 1907, 7-19-11*

SCALE 100 FEET TO AN INCH



028-9

CASE NO. 46345  
THE PLAT ATTACHED TO PAGE NO. 340 IN  
RECORD BOOK 22 IS MICROFILMED ON  
SPECIAL 35MM REEL FOR PLATS.

*Lucy Reed*  
Microfilm Operator