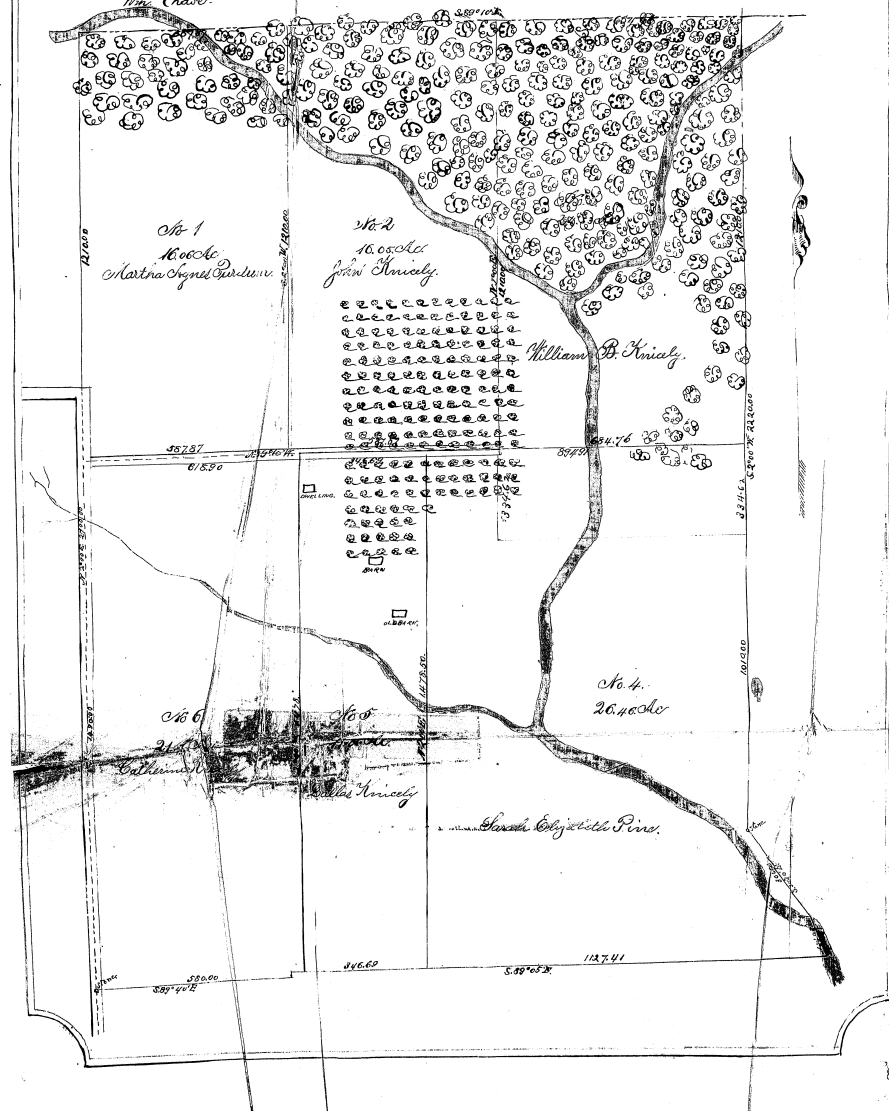


PLAT IN PARTITION
AMONG THE HEIRS OF
"A" *Paul Kincaid Dec'd.*

Commissioners
*John Lumstein
John H. Stewart
Wm. Chase.*

Case No 52384. Ham. Com. Pleas.
SEC. 30 TOWNSHIP 1 E. R. 1
SCALE 150 FT PER IN.

Surveyor
R. G. Phillips.



028-7

CASE NO. 52372
THE PLAT ATTACHED TO PAGE NO. 388 IN
RECORD BOOK 18 IS MICROFILMED ON
SPECIAL 35MM REEL FOR PLATS.

Ludlow Stodd
Microfilm Operator