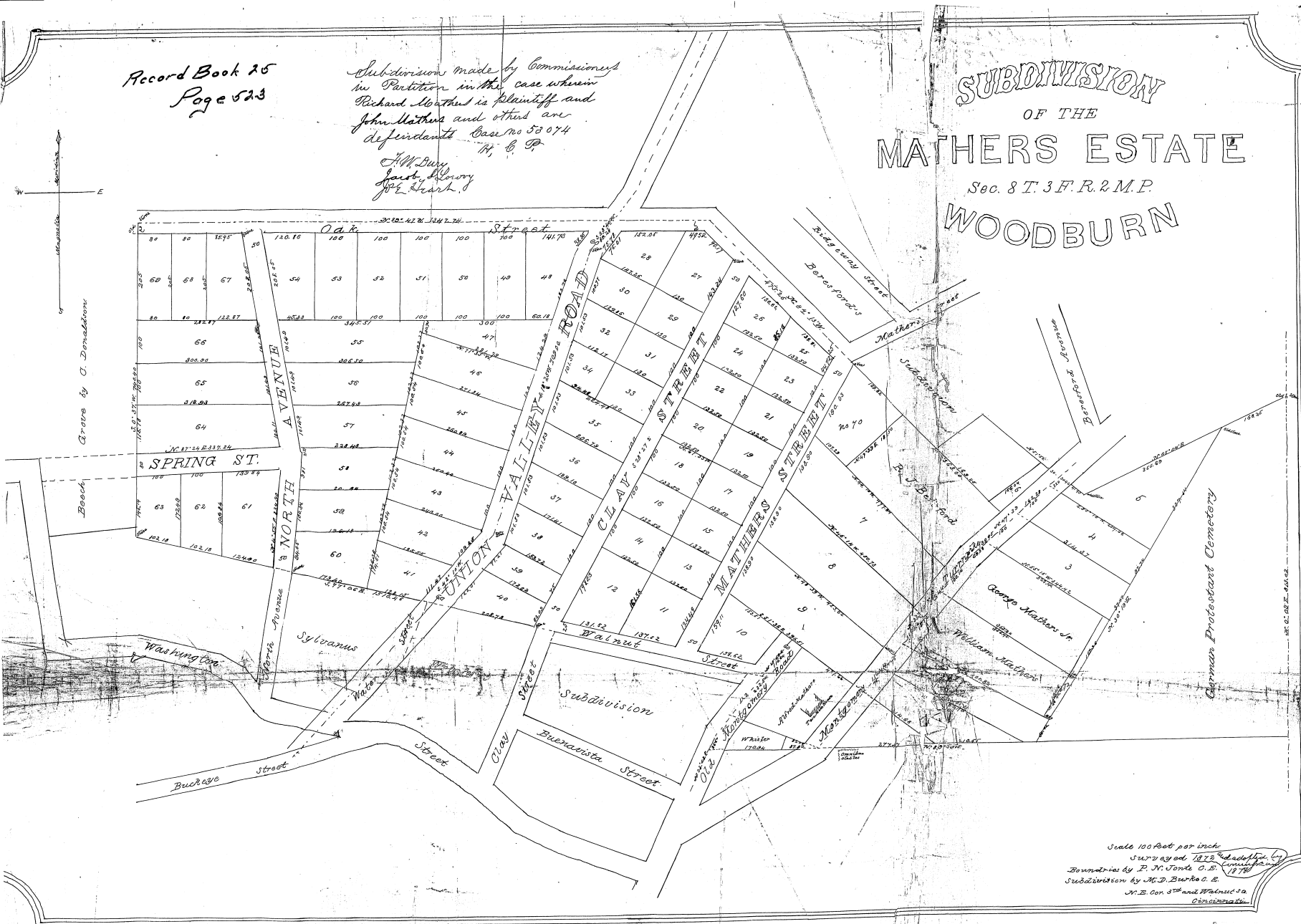


Record Book 25
Page 523

Subdivision made by Commission
in Partition in the case wherein
Richard Mathers is plaintiff and
John Mathers and others are
defendants Case No 53074
N. C. P.

J. M. Dwyer
Supt. Survey
J. E. Clark

SUBDIVISION OF THE MATHERS ESTATE Sec. 8 T. 3 F. R. 2 M. P. WOODBURN



Scale 100 feet per inch
Surveyed 1882 and subdivided by
boundaries by F. N. Tombs C.E.
Subdivided by H. D. Burke C.E.
N. C. Con. 3rd and Mathers Co.
Charlotte

68B-11

CASE NO. 53074
THE PLAT ATTACHED TO PAGE NO. 523 IN
RECORD BOOK 25 IS MICROFILMED ON
SPECIAL 35MM REEL FOR PLATS.

Lucke Steich
Microfilm Operator